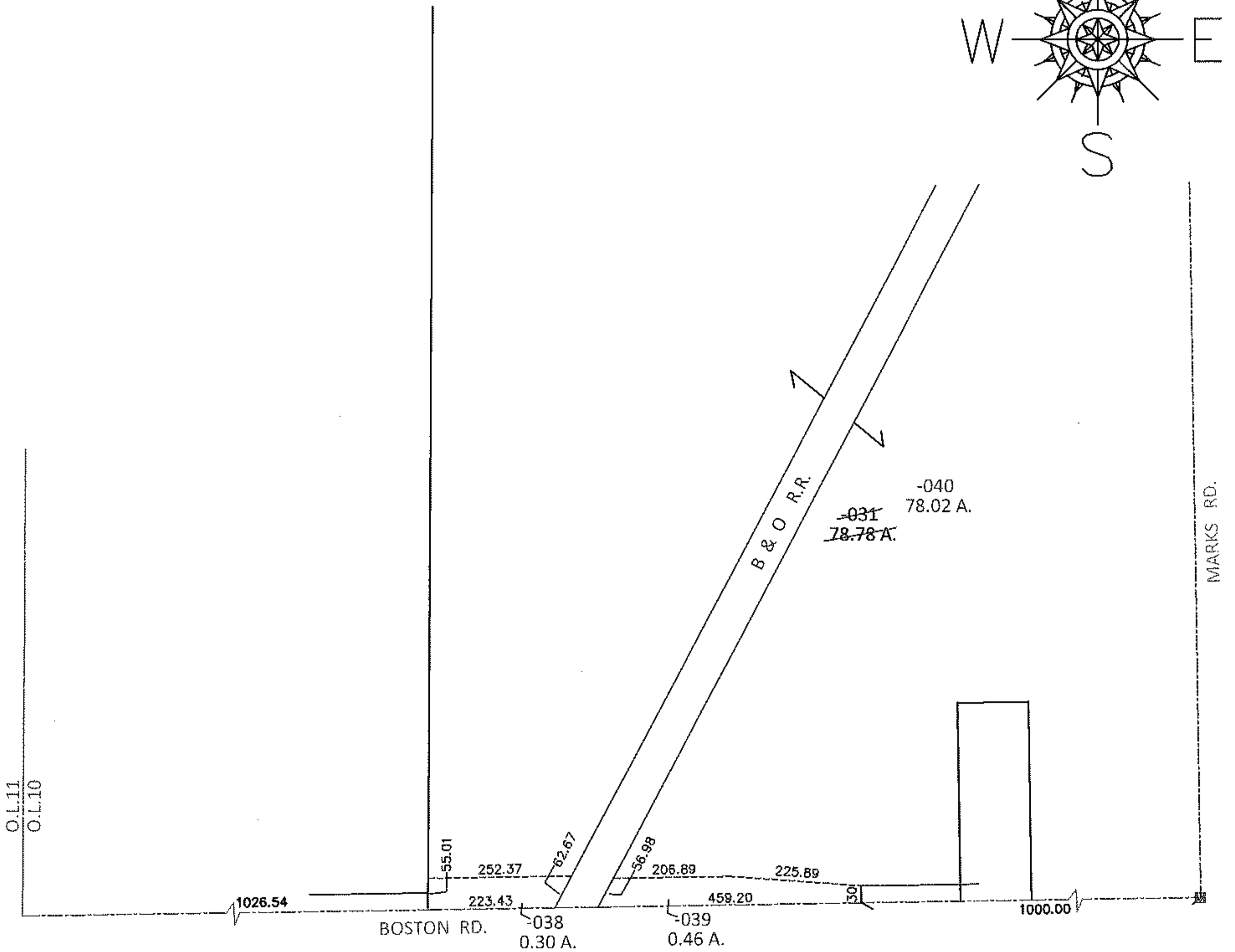
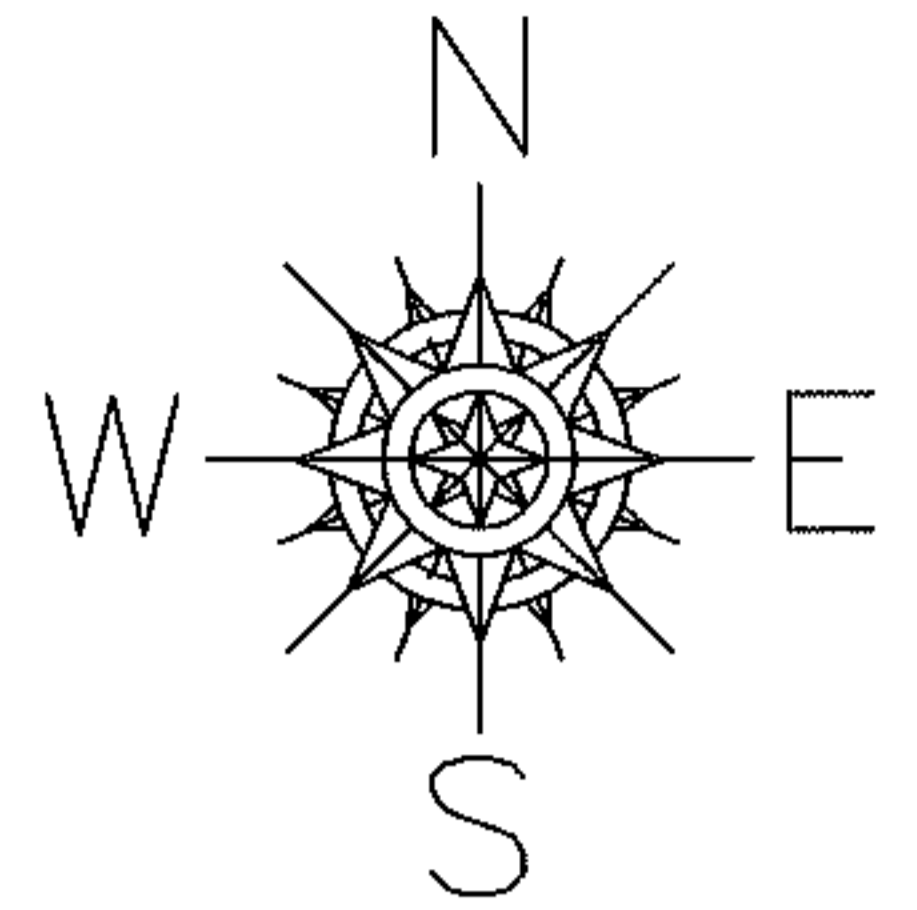


PARENT PARCEL: 12-00-010-000-031

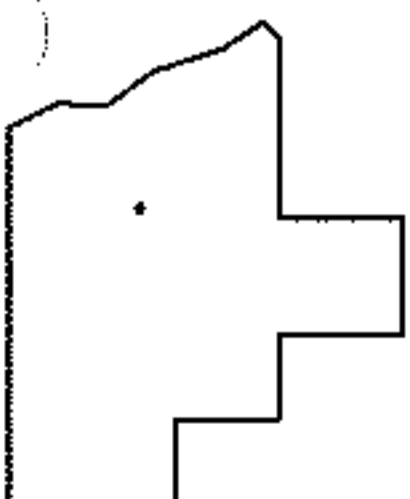
CHILD PARCEL: 12-00-010-000-038 THRU -040

13-03153

STARTING POINT: SOUTHWEST CORNER OF O.L.10



**LOR - BOSTON RD. RR CROSSING**  
**9-WDV1 & 9-WDV2**



**SPLITS/DEEDS PROCESSED**

LORAIN COUNTY TAX MAP DEPARTMENT  
226 MIDDLE AVE. ELYRIA, OHIO

SURVEYED BY: DAN STANKAVICH

CLOSURE: .01:10,000

MAP PAGE(S): 12-H

APPROVED BY: RRM DATE: 6-4-13

SCALE: 1" = 300 PRIOR INST.: 20080275074