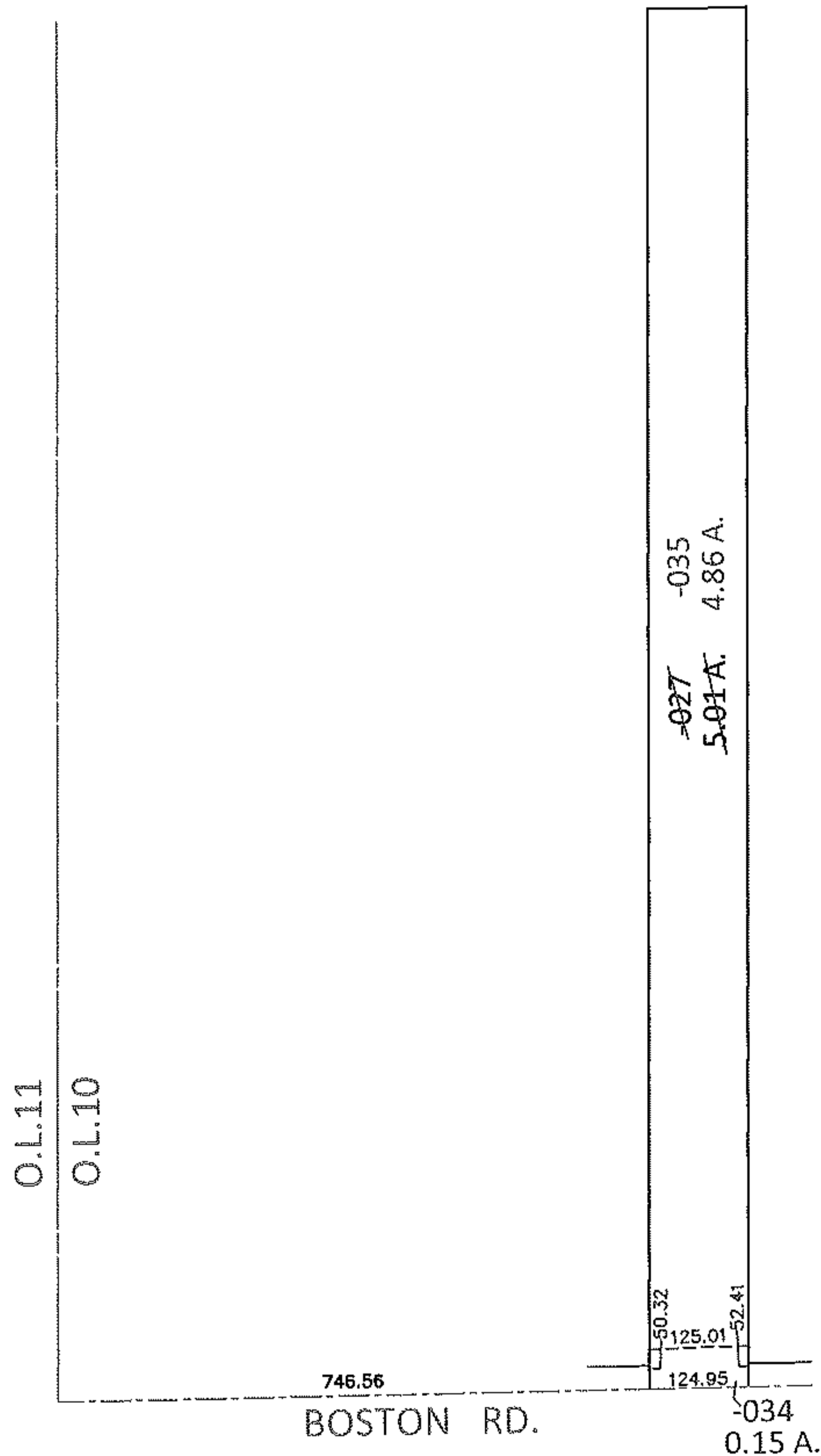
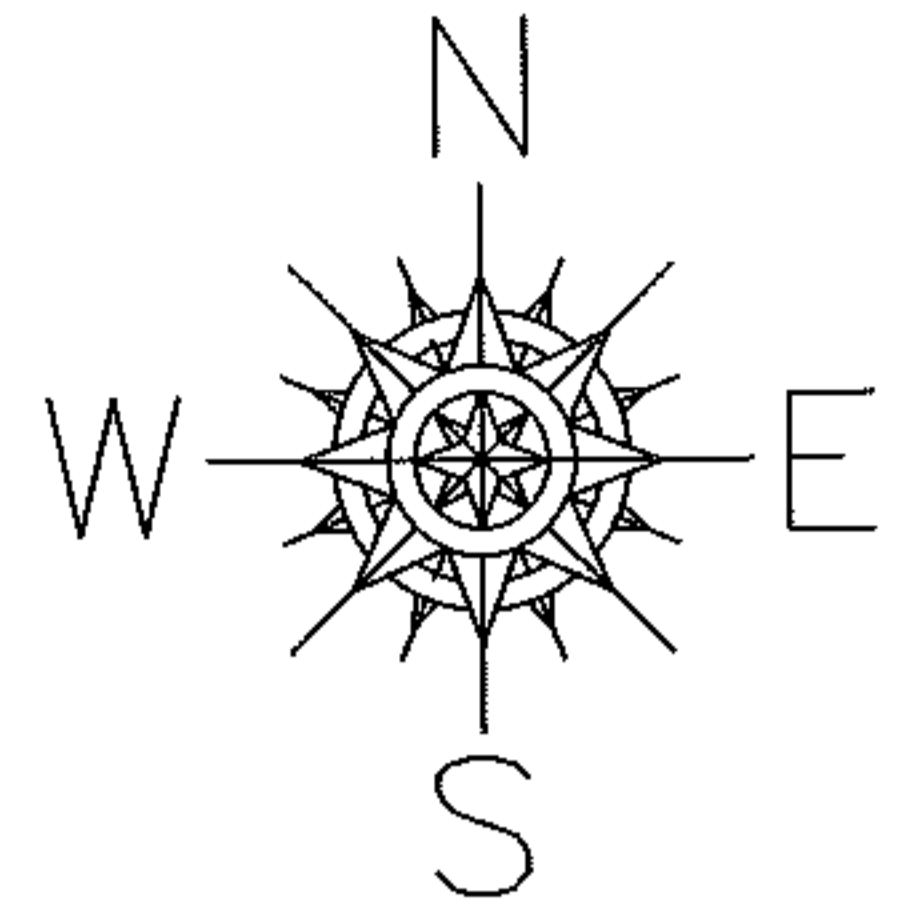


PARENT PARCEL: 12-00-010-000-027

CHILD PARCEL: 12-00-010-000-034, -035

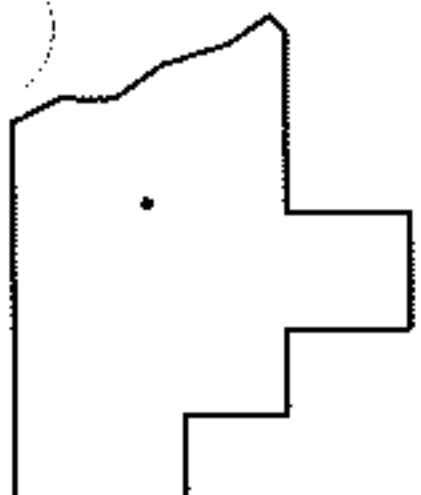
13-03151

STARTING POINT: SOUTHWEST CORNER OF O.L.10



LOR - BOSTON RD. RR CROSSING

3-WDV



SPLITS/DEEDS PROCESSED

LORAIN COUNTY TAX MAP DEPARTMENT
226 MIDDLE AVE. ELYRIA, OHIO

SURVEYED BY: DAN STANKAVICH

CLOSURE: .01:10,000

MAP PAGE(S): 12-H

APPROVED BY: RRM DATE: 6-3-13

SCALE: 1"= 300 PRIOR INST.: OR 576/277