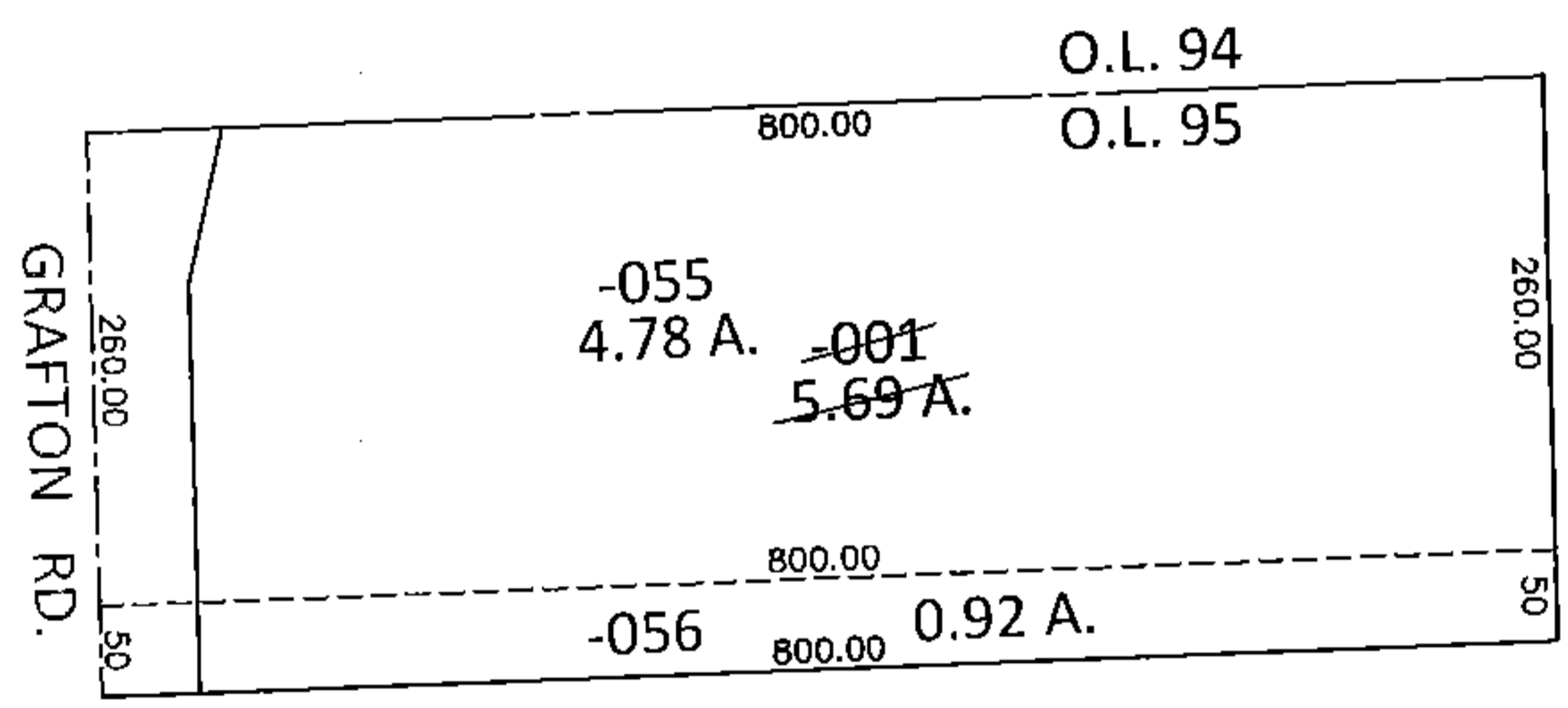
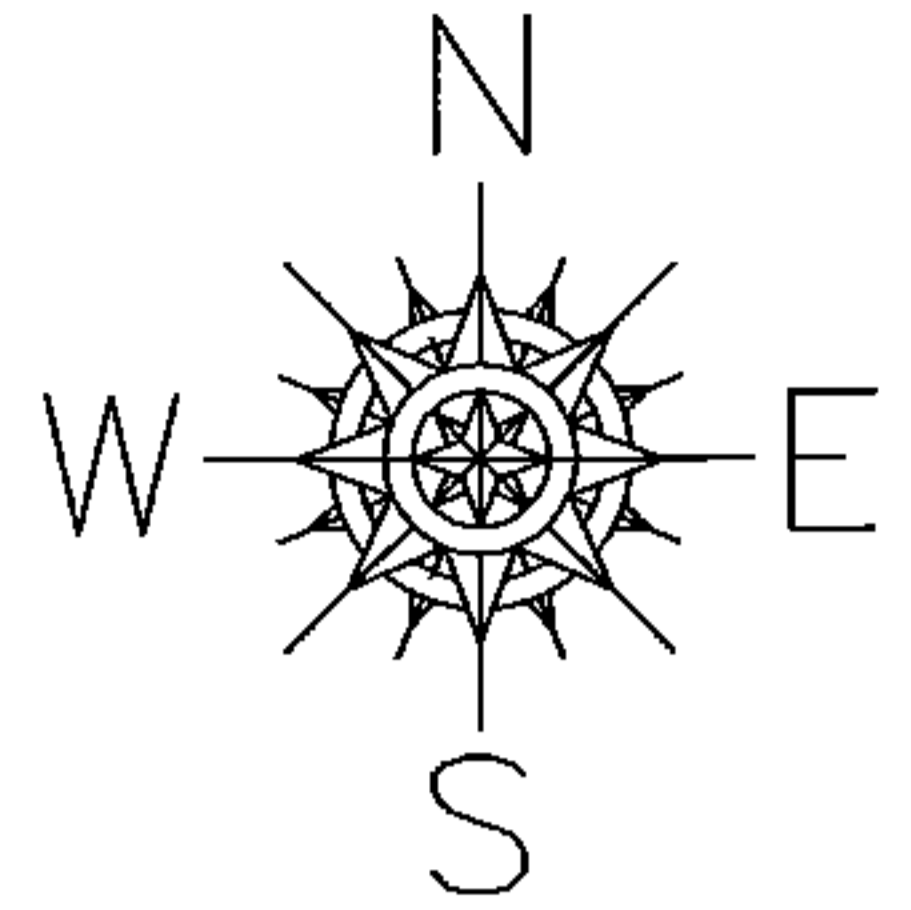


PARENT PARCEL: 11-00-095-000-001  
CHILD PARCEL: 11-00-095-000-055, -056  
STARTING POINT: NORTHWEST CORNER OF O.L.95

**15-03147-X**

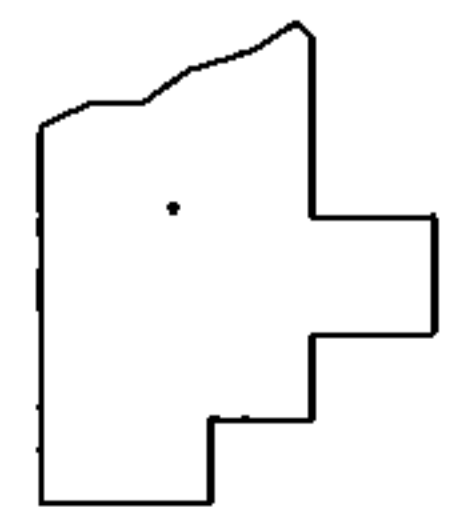


**UNCOMBINATION**

~~11-00-095-000-001~~  
~~5.69 A.~~

11-00-095-000-055      11-00-095-000-056  
4.78 A.                      0.92 A.

PER PRIOR DEEDS



**SPLITS/DEEDS PROCESSED**  
LORAIN COUNTY TAX MAP DEPARTMENT  
226 MIDDLE AVE. ELYRIA, OHIO

SURVEYED BY: J.W.WARDEN  
CLOSURE: .00:10,000  
MAP PAGE(S): 11-00-095-A  
APPROVED BY: RRM      DATE: 4-17-15  
SCALE: 1"= 200      PRIOR INST.: 20010771335