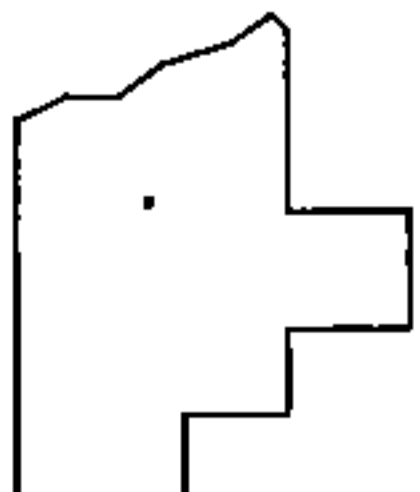
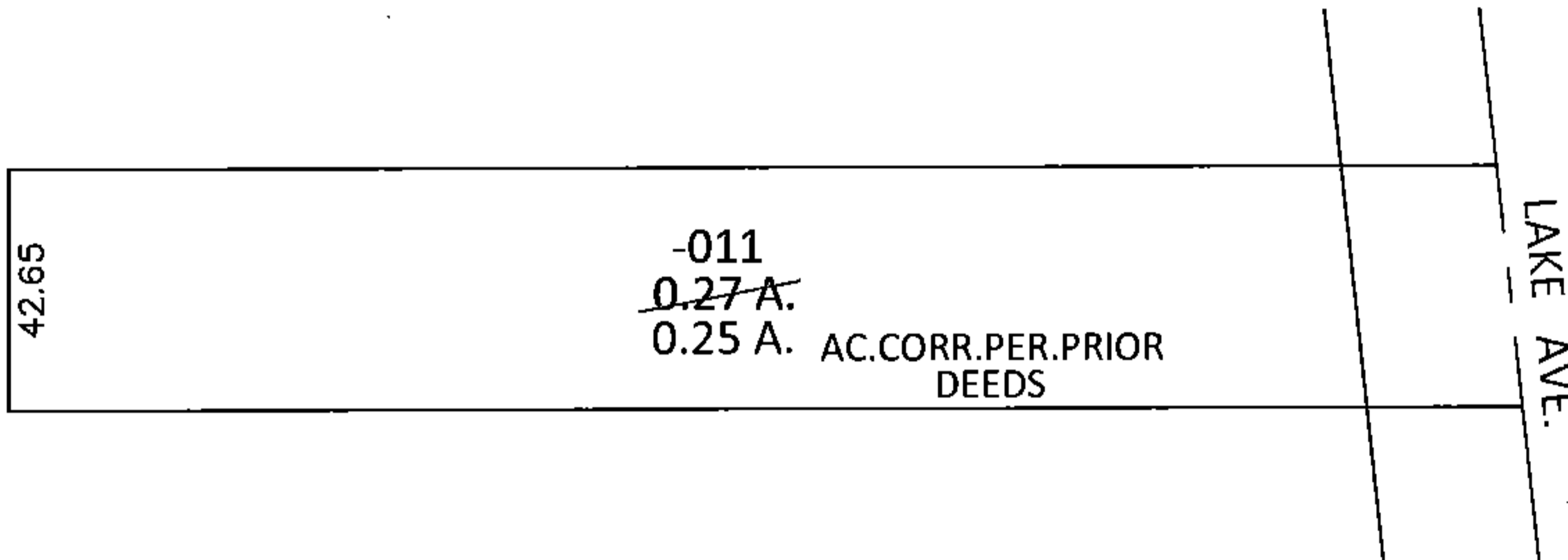
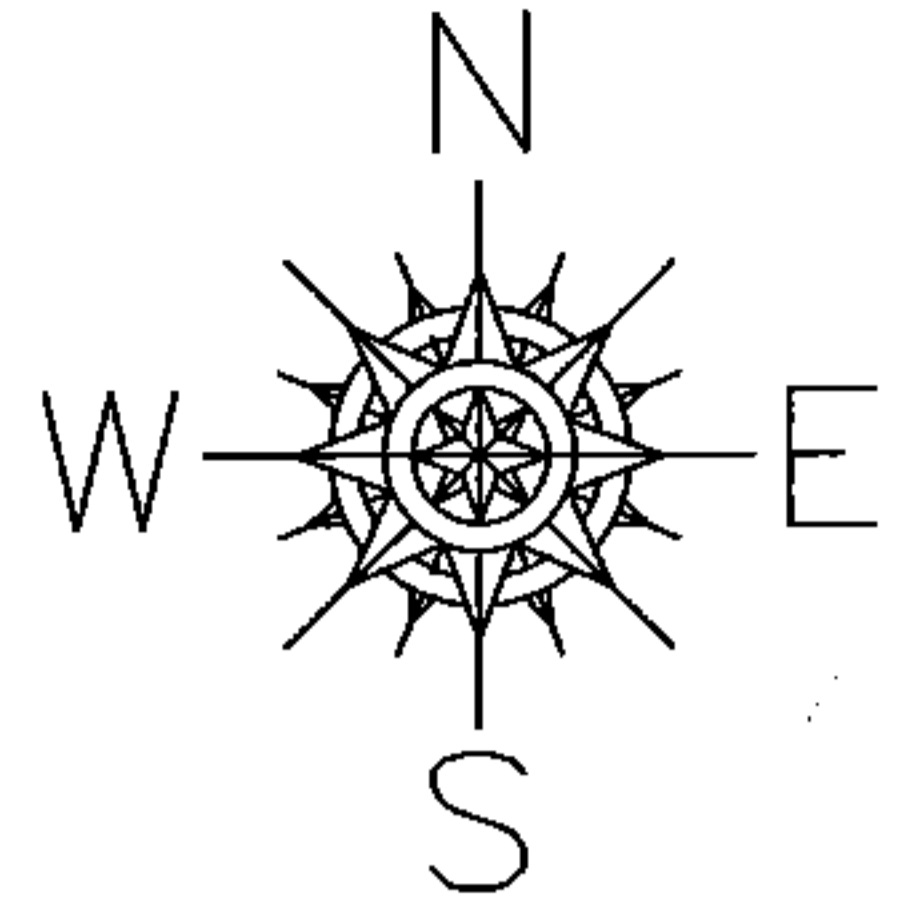


PARENT PARCEL: 06-24-037-103-011

CHILD PARCEL: _____

STARTING POINT: NORTHEAST CORNER OF LAND CONVEYED TO A. MONROE (DV 172/54)

15-03145-A



SPLITS/DEEDS PROCESSED

LORAIN COUNTY TAX MAP DEPARTMENT
226 MIDDLE AVE. ELYRIA, OHIO

SURVEYED BY: N/A

CLOSURE: N/A

MAP PAGE(S): 6-42

APPROVED BY: RRM DATE: 4-15-15

SCALE: 1"= 50' PRIOR INST.: 20080278179