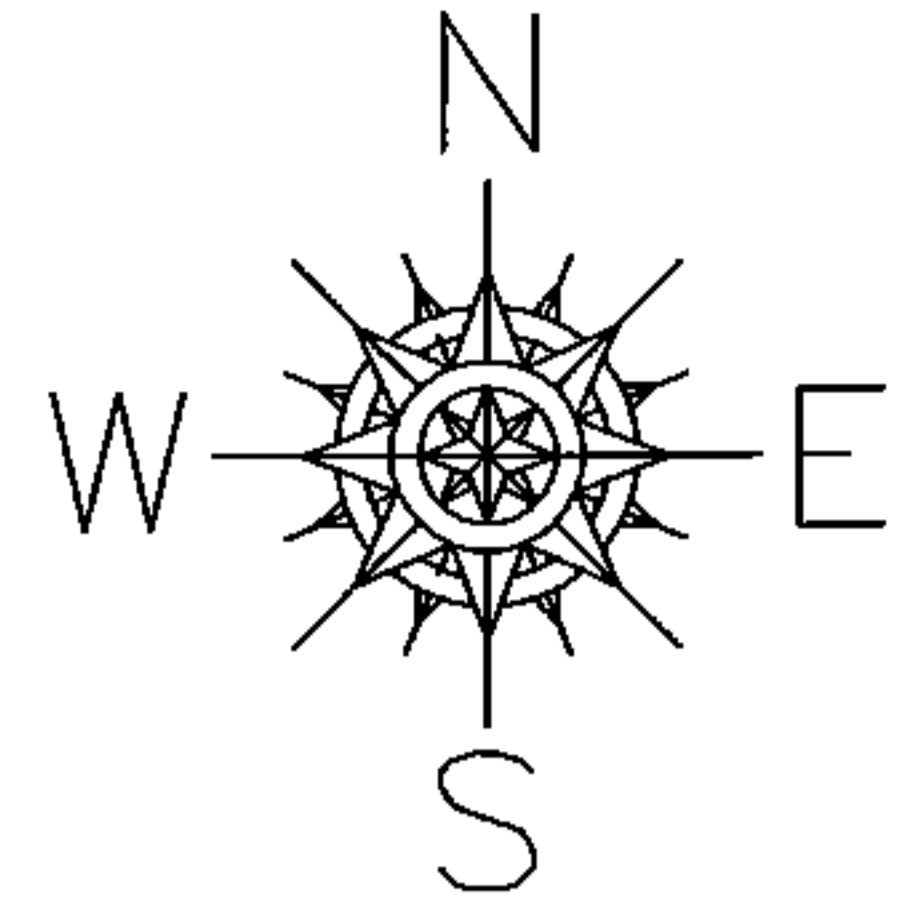


PARENT PARCEL: 09-00-076-102-007

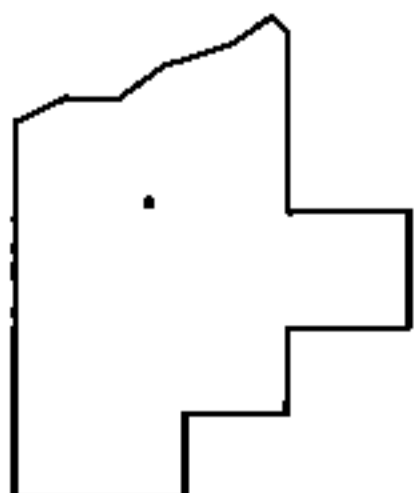
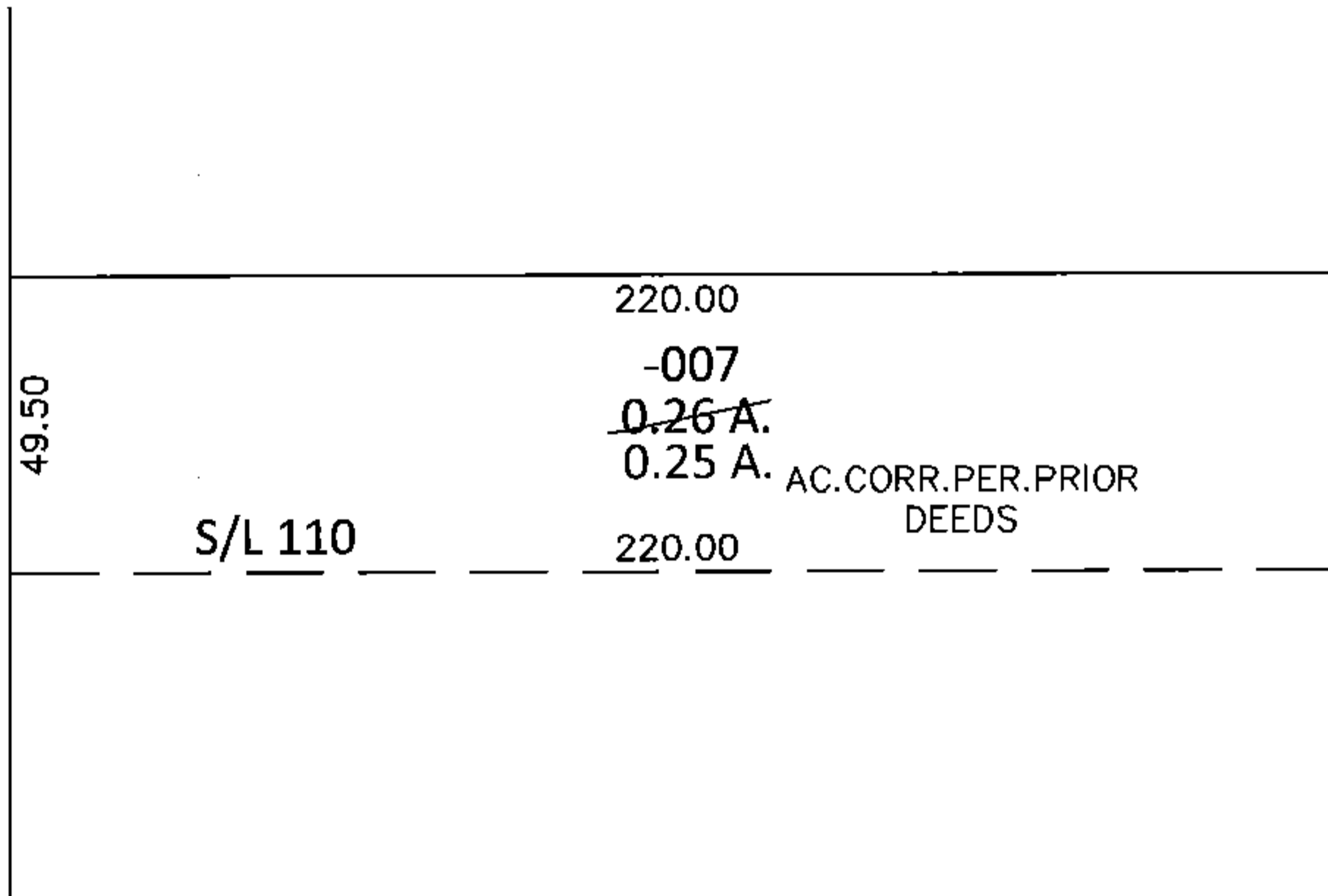
CHILD PARCEL:

STARTING POINT: NORTH HALF OF VILLAGE LOT 110 IN VILLAGE OF OBERLIN PLAT (VOL. 5 PG. 30)

15-03143-A



N. MAIN ST. (S.R. 58)



SPLITS/DEEDS PROCESSED

LORAIN COUNTY TAX MAP DEPARTMENT
226 MIDDLE AVE. ELYRIA, OHIO

SURVEYED BY: N/A

CLOSURE: N/A

MAP PAGE(S): 9-00-076-A

APPROVED BY: RRM DATE: 4-13-15

SCALE: 1"= 50' PRIOR INST.: 20150533095