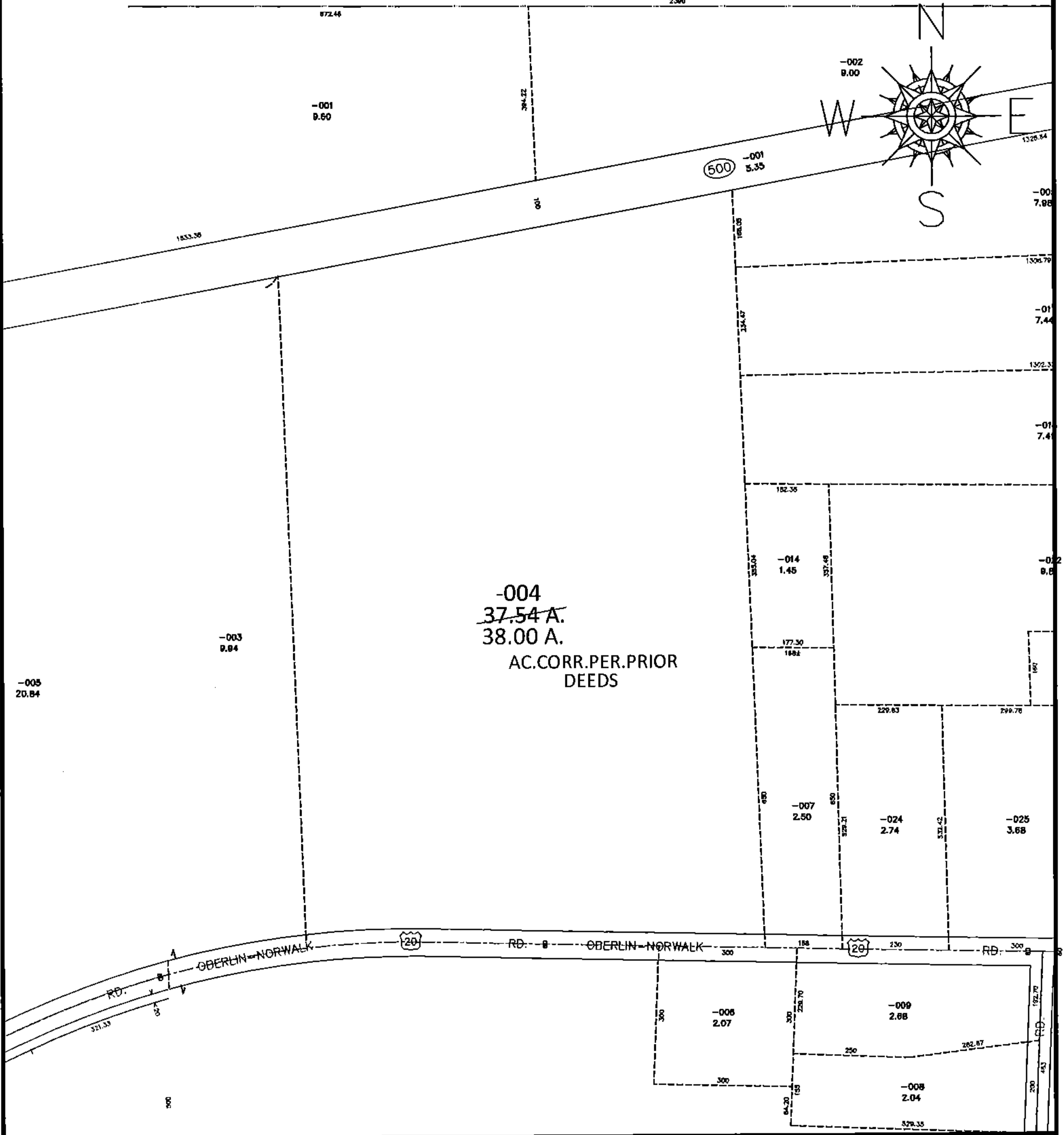


PARENT PARCEL: 13-11-021-000-004

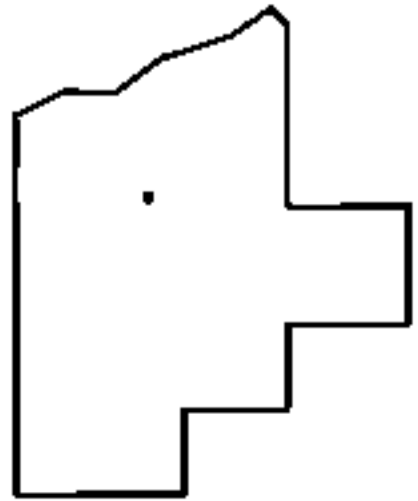
CHILD PARCEL: _____

STARTING POINT: SOUTHWEST CORNER OF LAND COVEYED TO OSCAR & ALICE OLSON (DV 234/420)

15-03136-X



-004
~~37.54 A.~~
 38.00 A.
 AC.CORR.PER.PRIOR
 DEEDS



SPLITS/DEEDS PROCESSED

LORAIN COUNTY TAX MAP DEPARTMENT
 226 MIDDLE AVE. ELYRIA, OHIO

SURVEYED BY: N/A

CLOSURE: N/A

MAP PAGE(S): 13-A

APPROVED BY: RRM DATE: 6-11-15

SCALE: 1" = 300 PRIOR INST.: 20150539677