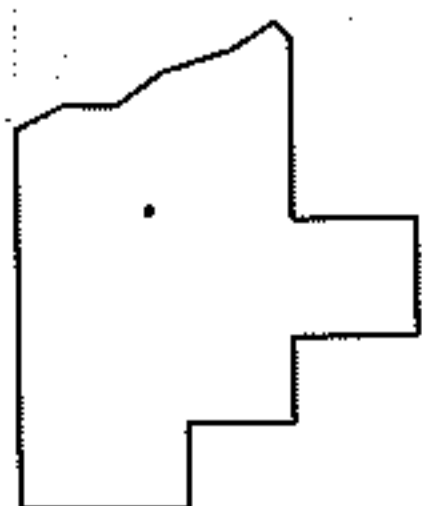
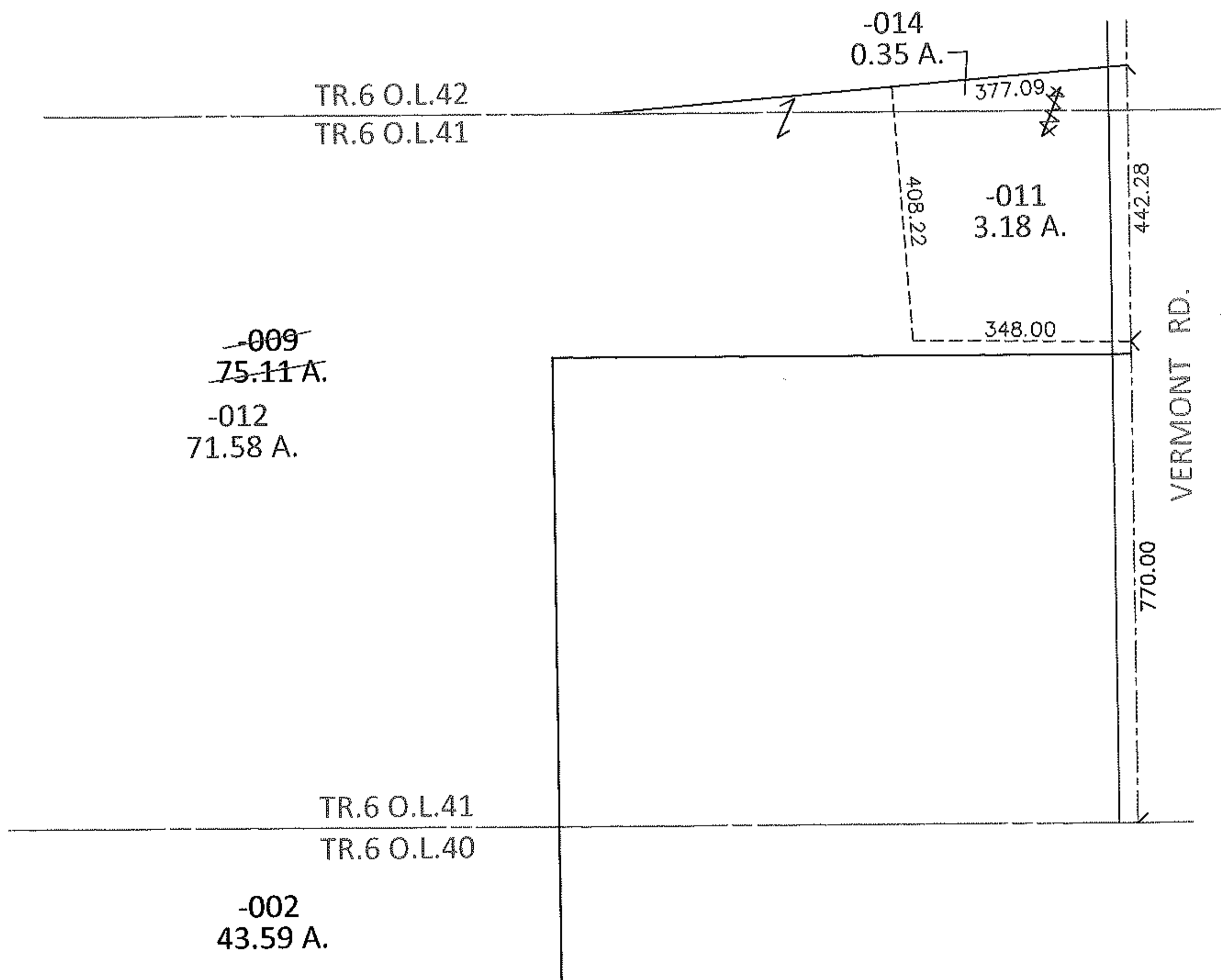
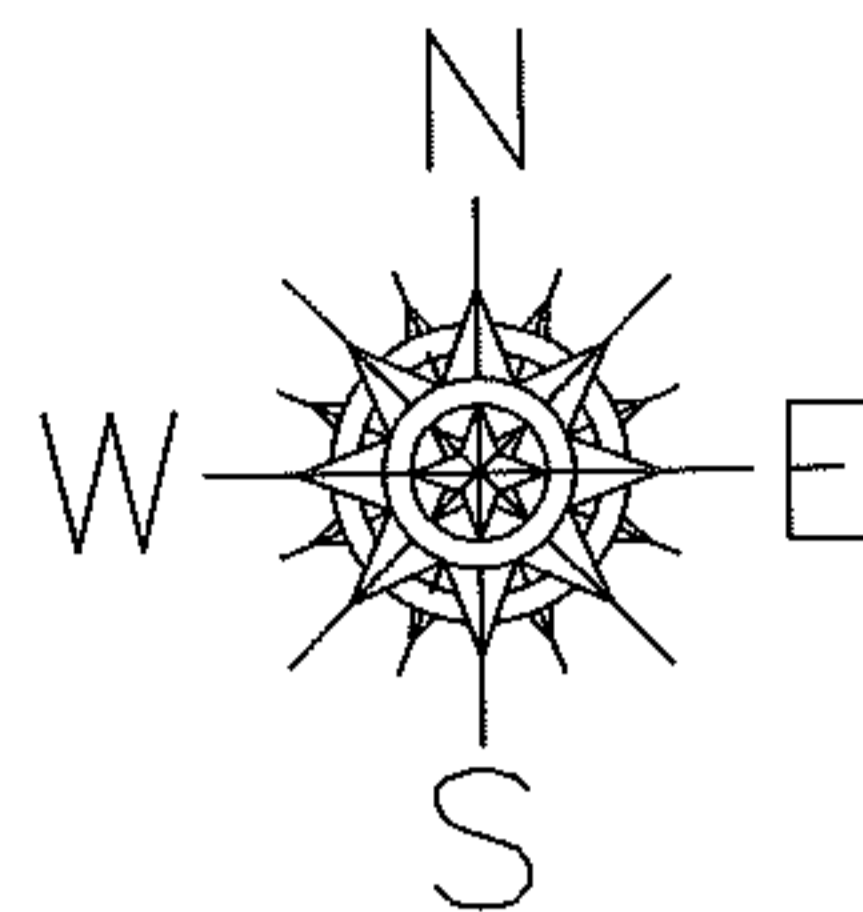


PARENT PARCEL: 19-06-041-000-009, 19-06-040-000-002
CHILD PARCEL: 19-06-041-000-011, -012, 19-06-042-000-014, 19-06-040-000-002
STARTING POINT: INTERSECTION OF C/L OF VERMONT ST. AND SOUTH LINE OF TR.6 O.L.41

13-03133



SPLITS/DEEDS PROCESSED

LORAIN COUNTY TAX MAP DEPARTMENT
226 MIDDLE AVE. ELYRIA, OHIO

SURVEYED BY: ADAM E. WEAVER
CLOSURE: .01:10,000
MAP PAGE(S): 19-D
APPROVED BY: RRM DATE: 4-8-13
SCALE: 1"= 300 PRIOR INST.: 20120440769