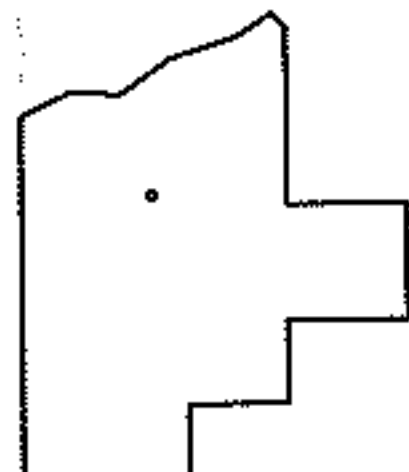
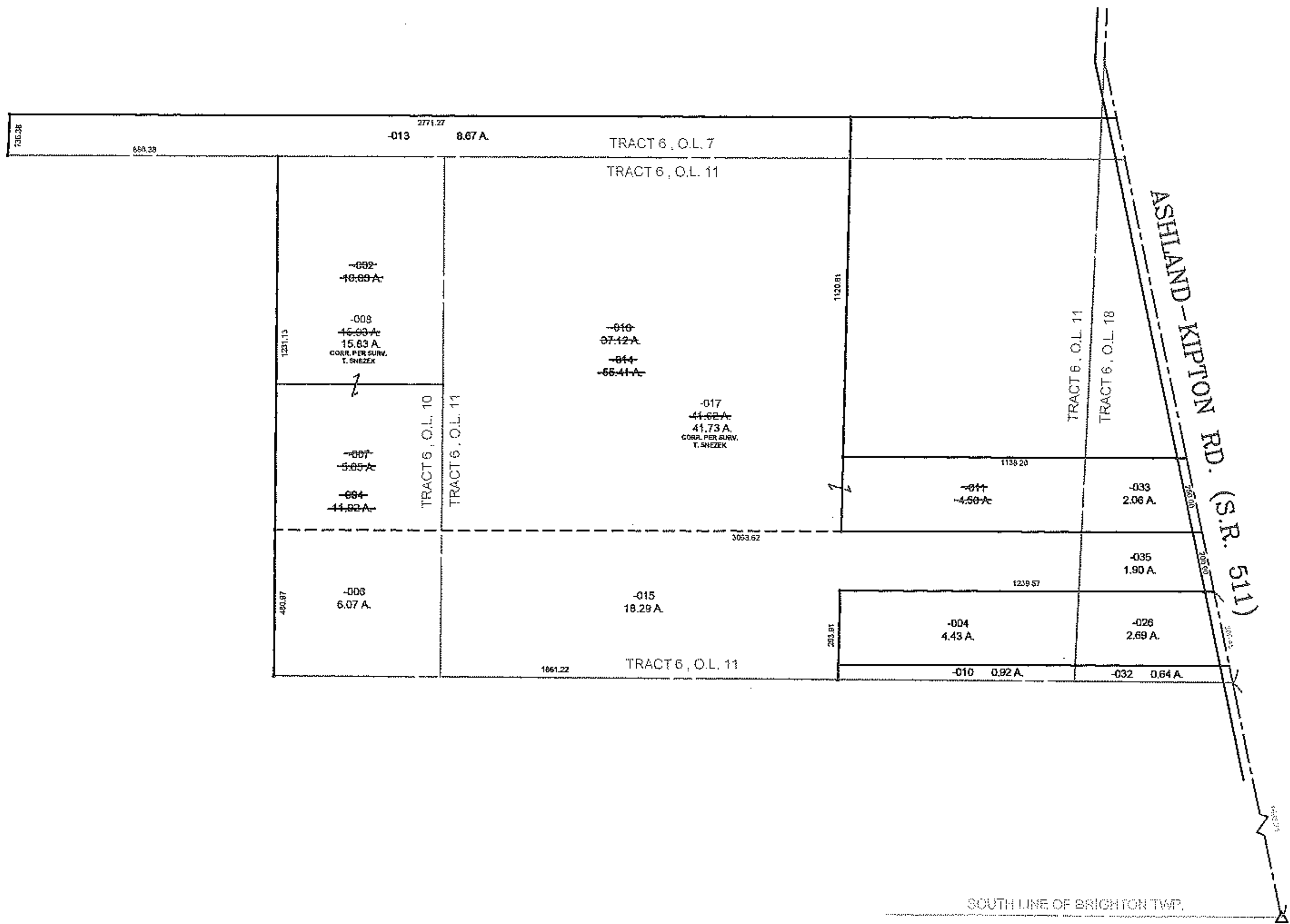
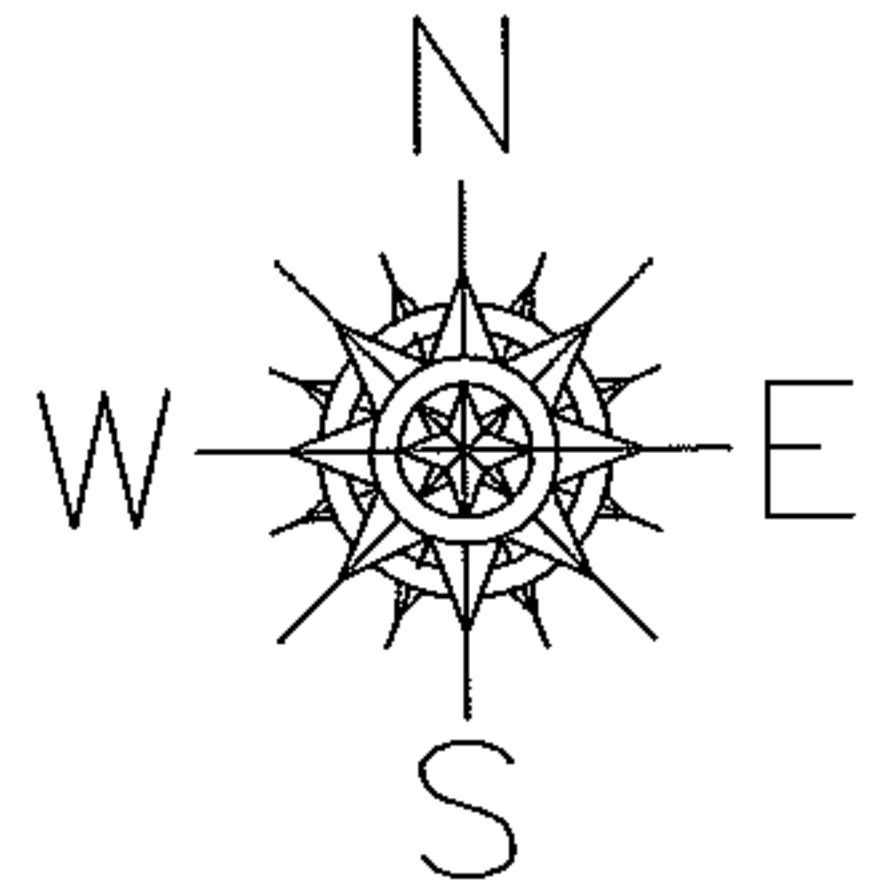


PARENT PARCEL: 17-06-010-000-002 & -004, 17-06-011-000-011 & -014
 CHILD PARCEL: 17-06-010-000-006 THRU -008 & 17-06-011-000-015 THRU -017
 STARTING POINT: R.R.S., CL OF ASHLAND-KIPTON RD. (S.R. 511) & SOUTH LINE OF BRIGHTON TWP.

13-03132



SPLITS/DEEDS PROCESSED
 LORAIN COUNTY TAX MAP DEPARTMENT
 226 MIDDLE AVE. ELYRIA, OHIO

SURVEYED BY: THOMAS M. SNEZEK
 CLOSURE: 0.01: 10.000
 MAP PAGE(S): 17-F
 APPROVED BY: TJS DATE: 4/5/13
 SCALE: 1" = 600 PRIOR INSTRUMENT: 20020866158