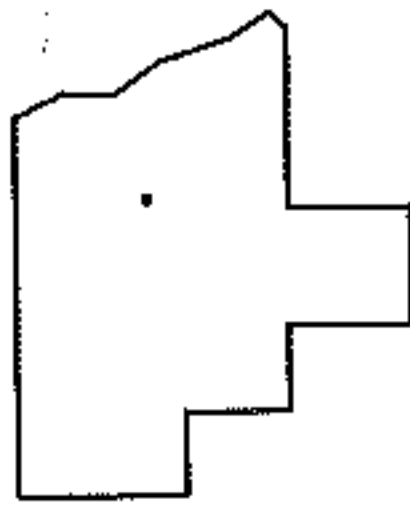
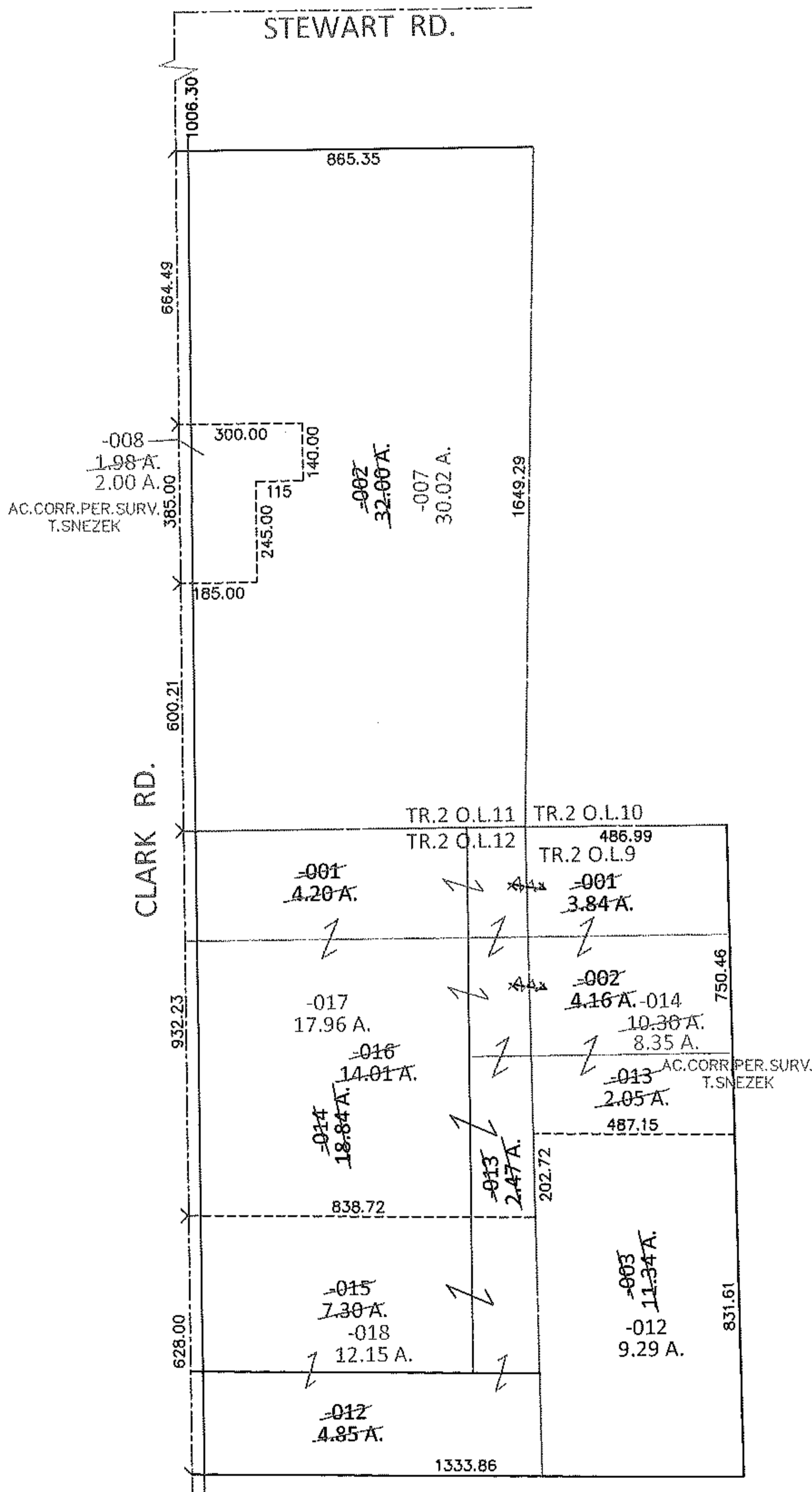
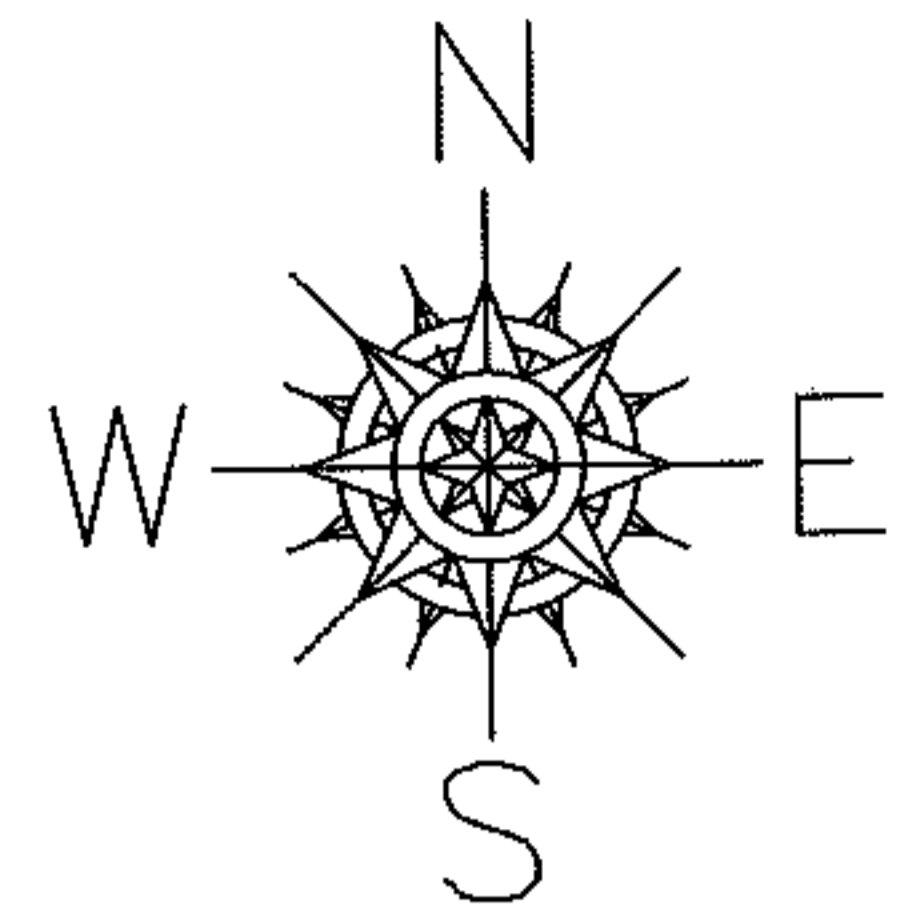


PARENT PARCEL: 21-02-011-000-002, 21-02-009-000-001,-002,-003, 21-02-012-000-001,-012,-013,-014

CHILD PARCEL: 21-02-009-000-012 THRU -014, 21-02-011-000-007,-008, 21-02-012-000-015 THRU -018

STARTING POINT: INTERSECTION OF C/L OF STEWART RD. AND C/L OF CLARK RD.

13-03131



**SPLITS/DEEDS PROCESSED**

LORAIN COUNTY TAX MAP DEPARTMENT  
226 MIDDLE AVE. ELYRIA, OHIO

SURVEYED BY: THOMAS M. SNEZEK

CLOSURE: .01:10,000

MAP PAGE(S): 21-F

APPROVED BY: RRM DATE: 4-2-13

SCALE: 1" = 450 PRIOR INST.: 20020822167