

PARENT PARCEL: 07-00-009-107-046

CHILD PARCEL:

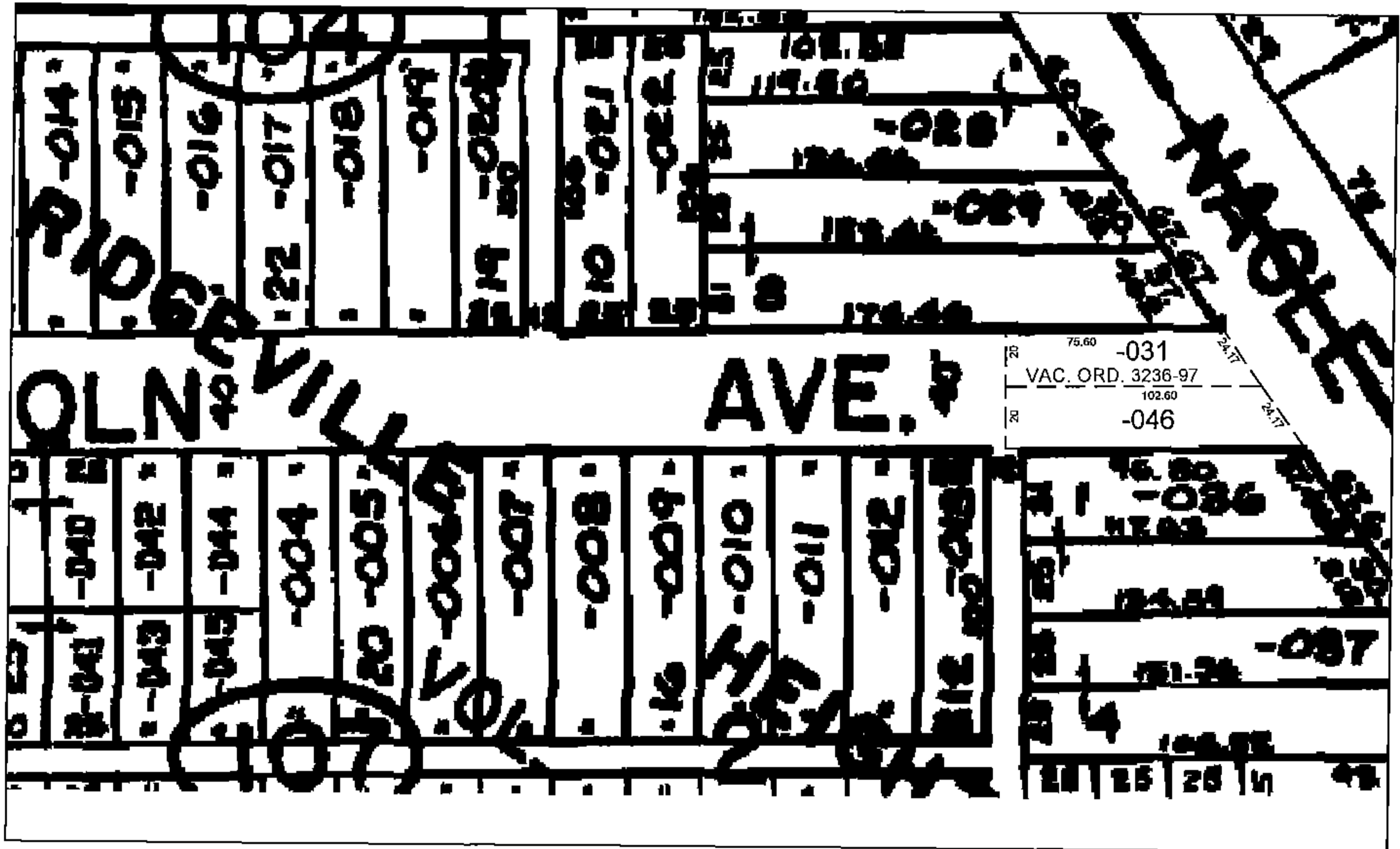
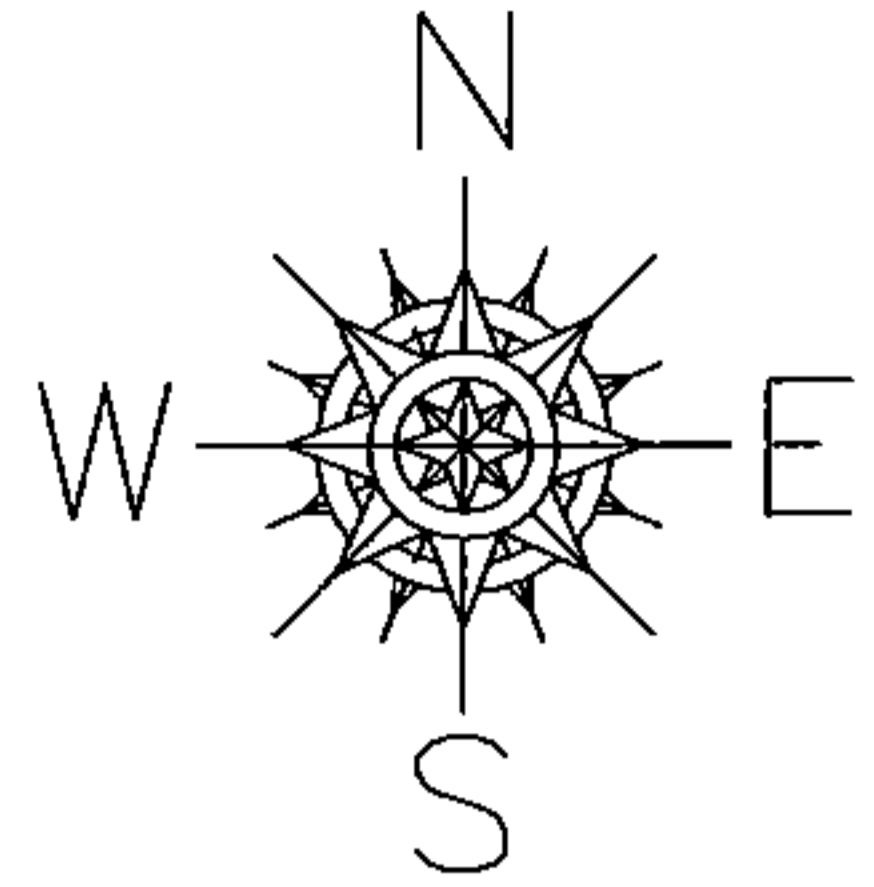
STARTING POINT: INT ROW OF NAGLE AND LINCOLN AVE

15-03131-C

NAME CORRECTION

07-00-009-104-046
24.17 X 102.60

FROM: MUNOZ, MONICA L.
TO: FELL, ROBERT C. & DIANE R.
PER DEED OR. 402/832
FELL NEVER DEEDED VACATED STREET OUT TO MUNOZ



SPLITS/DEEDS PROCESSED

LORAIN COUNTY TAX MAP DEPARTMENT
226 MIDDLE AVE. ELYRIA, OHIO

SURVEYED BY: N/A
CLOSURE: N/A
MAP PAGE(S): 07-00-009-B
APPROVED BY: TJS DATE: 3/23/15
SCALE: 1" = 100' PRIOR INSTRUMENT: ord 3236-97