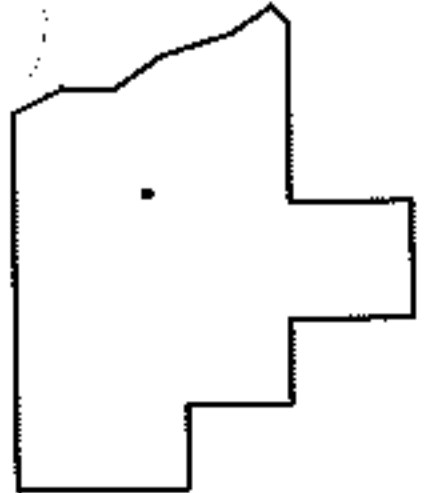
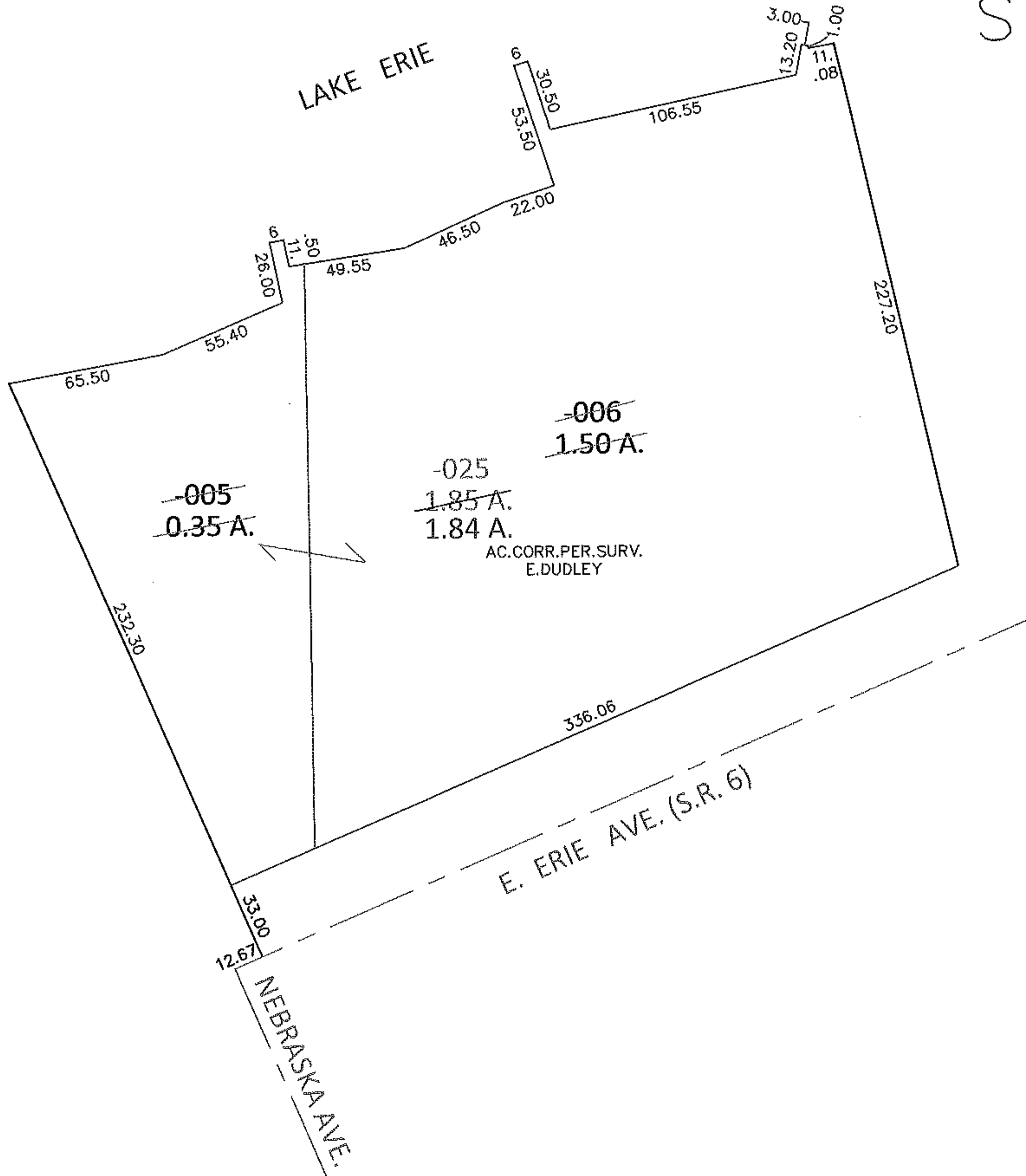
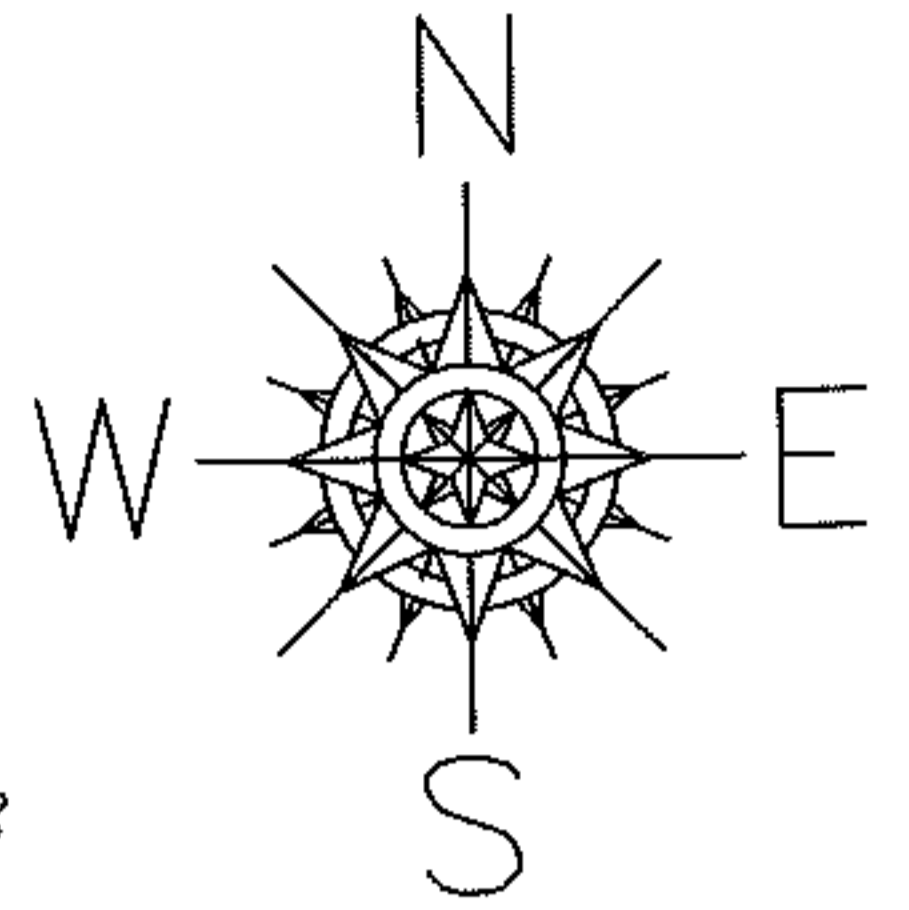


PARENT PARCEL: 03-00-048-101-005, -006

CHILD PARCEL: 03-00-048-101-025

STARTING POINT: INTERSECTION OF C/L OF NEBRASKA AVE. AND C/L OF E. ERIE AVE.

13-03128



SPLITS/DEEDS PROCESSED

LORAIN COUNTY TAX MAP DEPARTMENT
226 MIDDLE AVE. ELYRIA, OHIO

SURVEYED BY: EDWARD B. DUDLEY

CLOSURE: .01:10,000

MAP PAGE(S): 3-00-048

APPROVED BY: RRM DATE: 3-18-13

SCALE: 1"= 75 PRIOR INST.: DV 1291/559