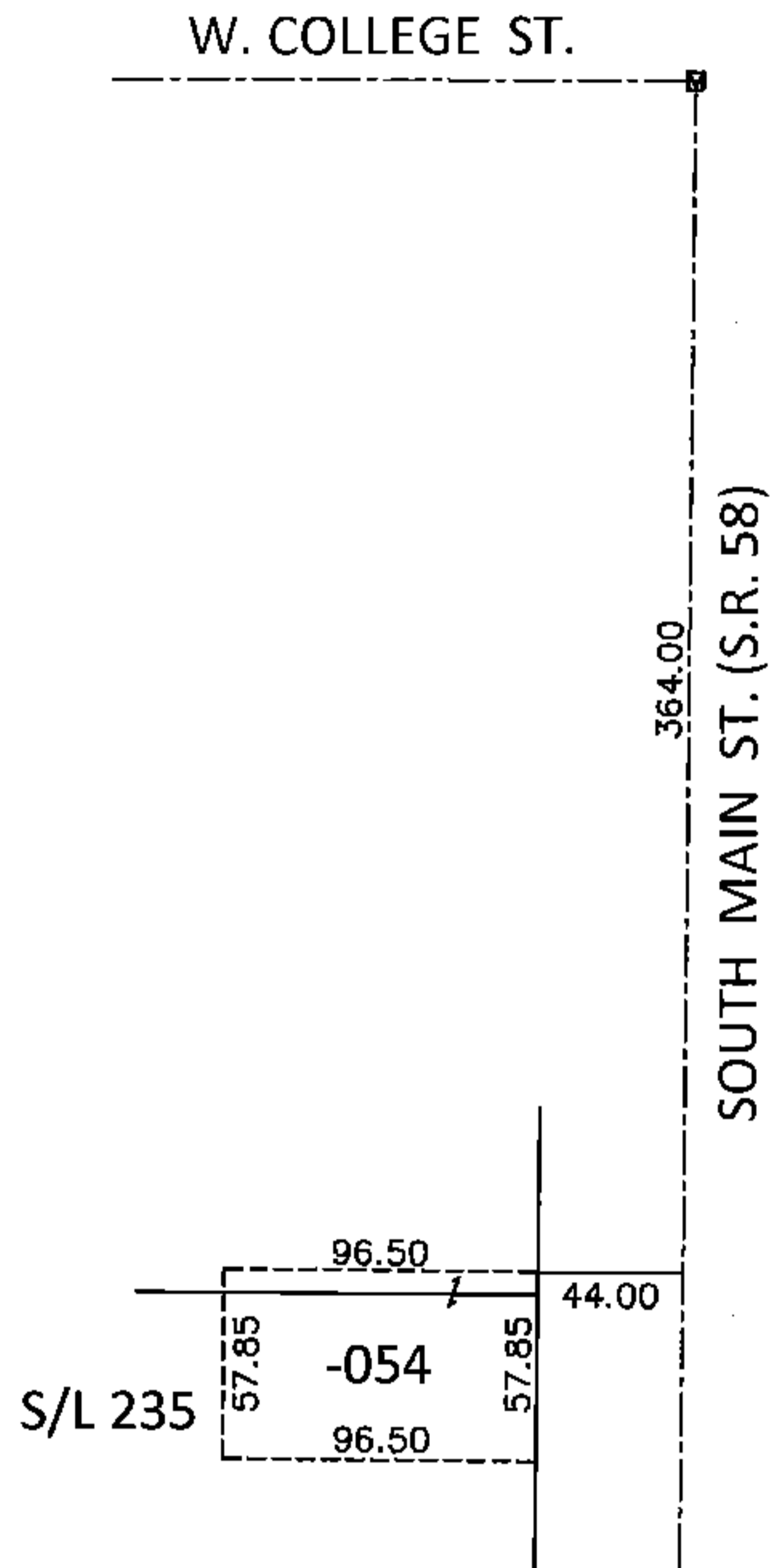
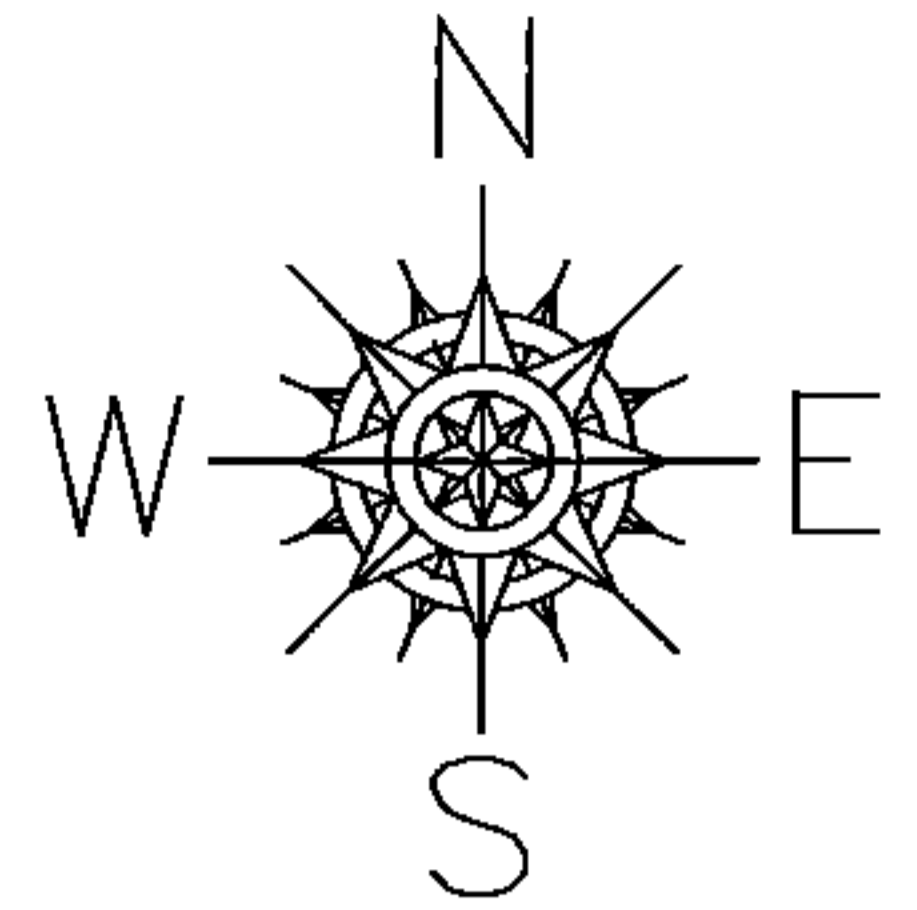


PARENT PARCEL: 09-00-085-112-054

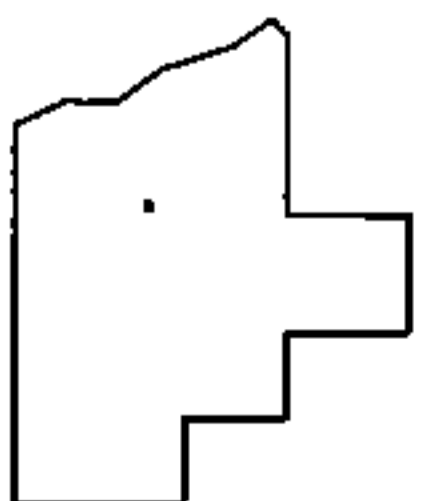
CHILD PARCEL: \_\_\_\_\_

STARTING POINT: AT A MON BOX AT THE INTERSECTION OF C/L OF W. COLLEGE ST. AND C/L OF S.R. 58

15-03127-X



NO MAP CHANGES



SPLITS/DEEDS PROCESSED

LORAIN COUNTY TAX MAP DEPARTMENT  
226 MIDDLE AVE. ELYRIA, OHIO

SURVEYED BY: JOHN R. ALBAN

CLOSURE: .00:10,000

MAP PAGE(S): 9-00-085-A

APPROVED BY: RRM DATE: 3-20-15

SCALE: 1"= 100 PRIOR INST.: 19990631691