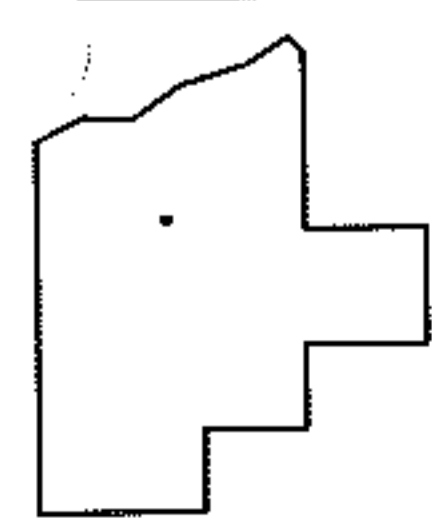
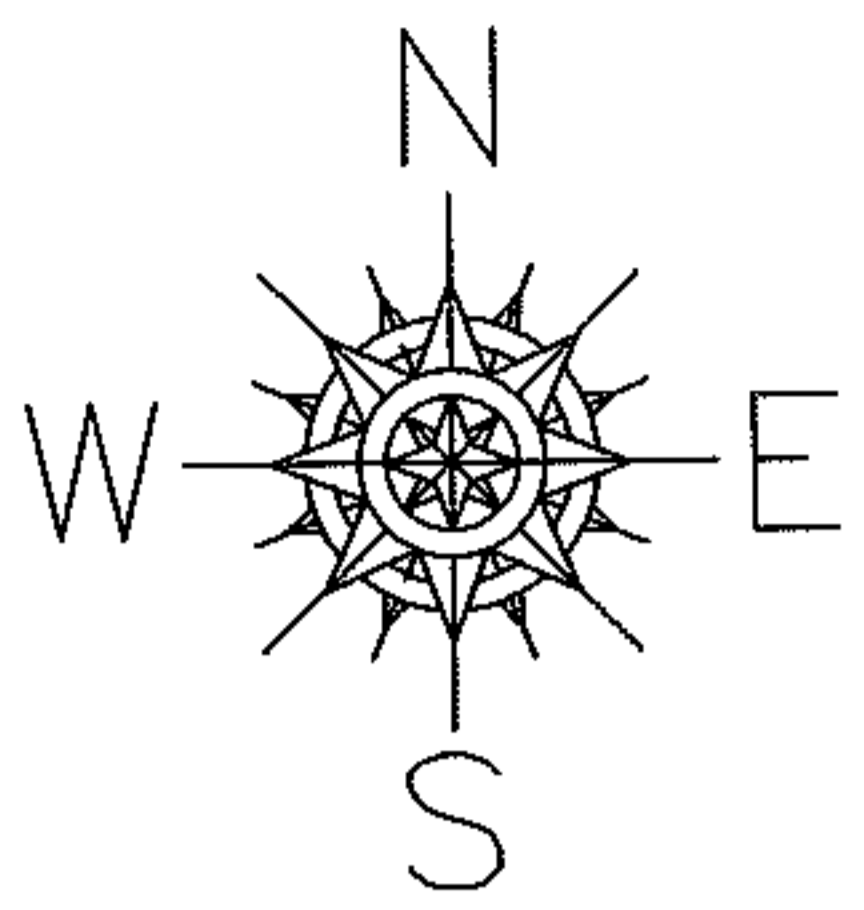
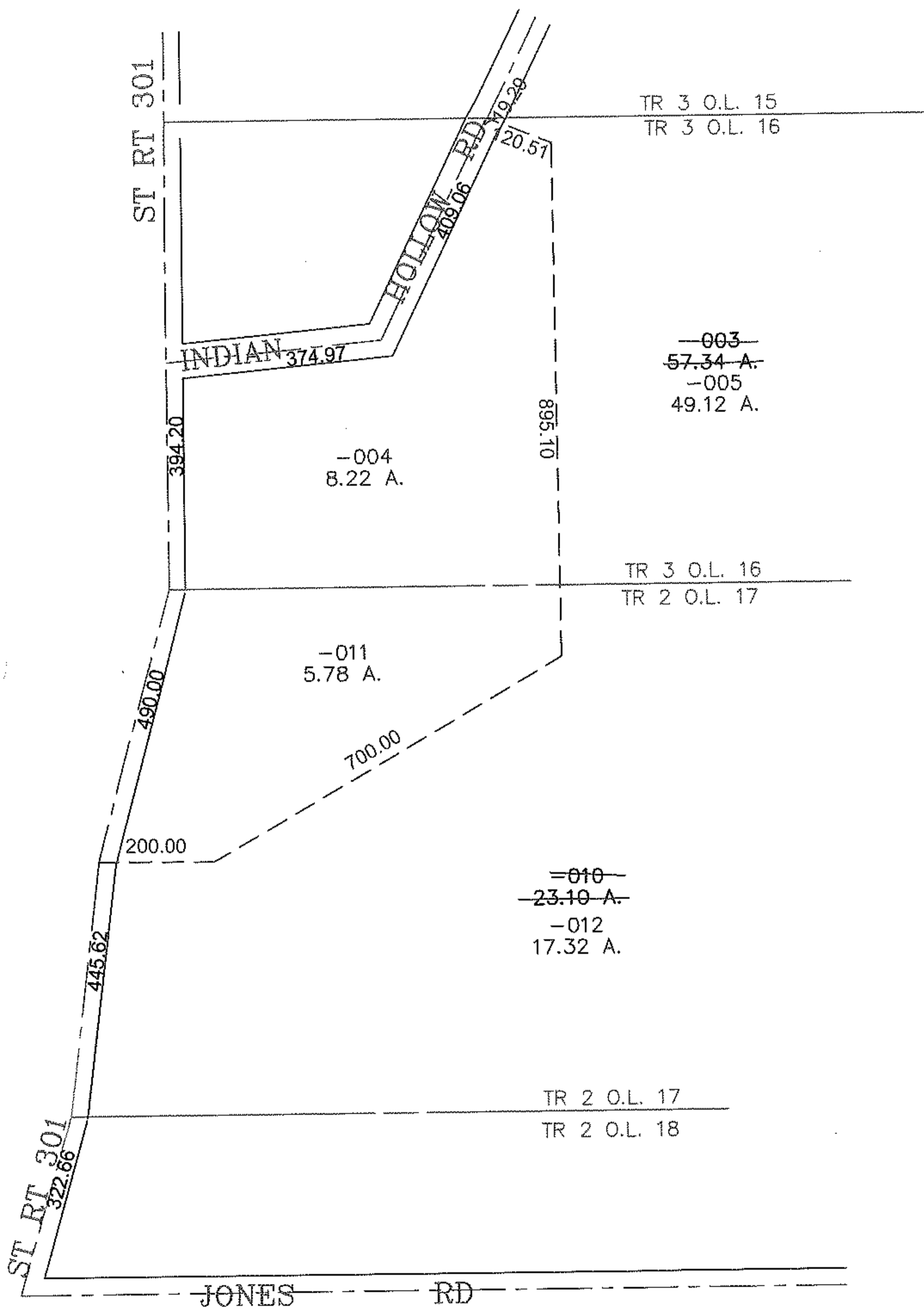


PARENT PARCEL: 19-03-016-000-003 & 19-02-017-000-010  
 CHILD PARCEL: 19-03-016-000-004, -005 & 19-02-017-000-011, -012  
 STARTING POINT: CENTERLINE OF ST RT 301 & TR 3 O.L. 16

13-03121



**SPLITS/DEEDS PROCESSED**  
 LORAIN COUNTY TAX MAP DEPARTMENT  
 226 MIDDLE AVE. ELYRIA, OHIO

SURVEYED BY: THOMAS SNEZEK  
 CLOSURE: 0.00 : 10.000  
 MAP PAGE(S): 19-F  
 APPROVED BY: JAH DATE: 2-14-2013  
 SCALE: 1" = 300' PRIOR INSTRUMENT: 20030960784