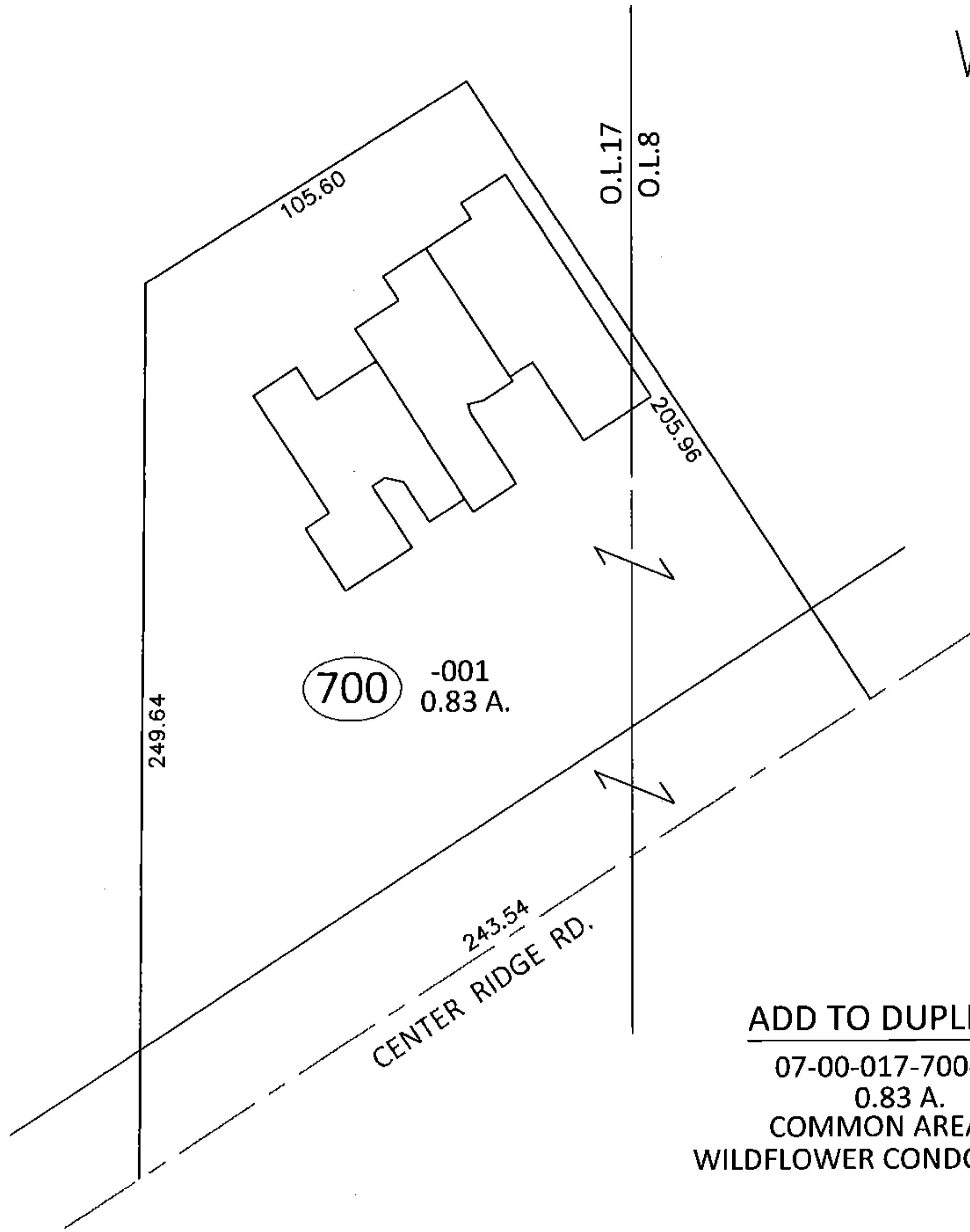
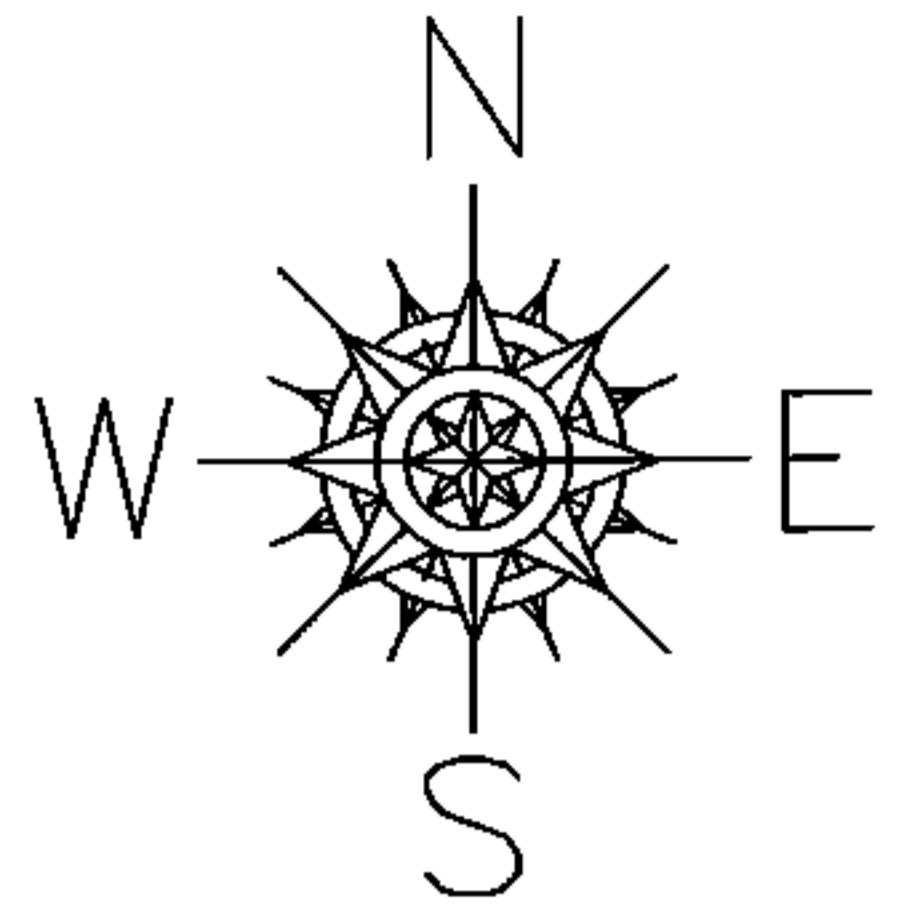
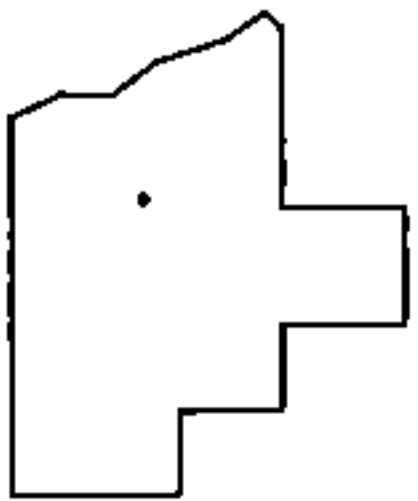


PARENT PARCEL: _____
CHILD PARCEL: 07-00-017-700-001
STARTING POINT: _____

15-03121-X



ADD TO DUPLICATE
07-00-017-700-001
0.83 A.
COMMON AREA OF
WILDFLOWER CONDOS PHASE 3



SPLITS/DEEDS PROCESSED
LORAIN COUNTY TAX MAP DEPARTMENT
226 MIDDLE AVE. ELYRIA, OHIO

SURVEYED BY: DANE A. HAPONER
CLOSURE: .01:10,000
MAP PAGE(S): 7-00-008-C
APPROVED BY: RRM DATE: 3-10-15
SCALE: 1"= 50' PRIOR INST.: VOL.59 PG.14