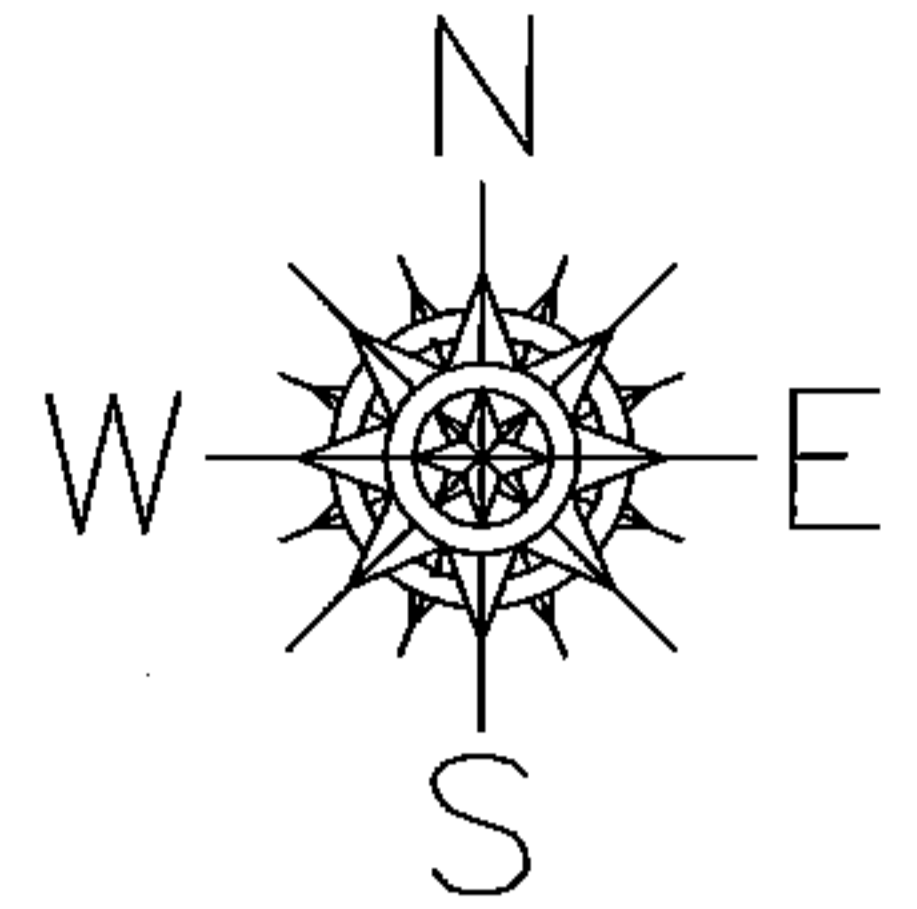


PARENT PARCEL: 05-00-023-103-005

CHILD PARCEL: \_\_\_\_\_

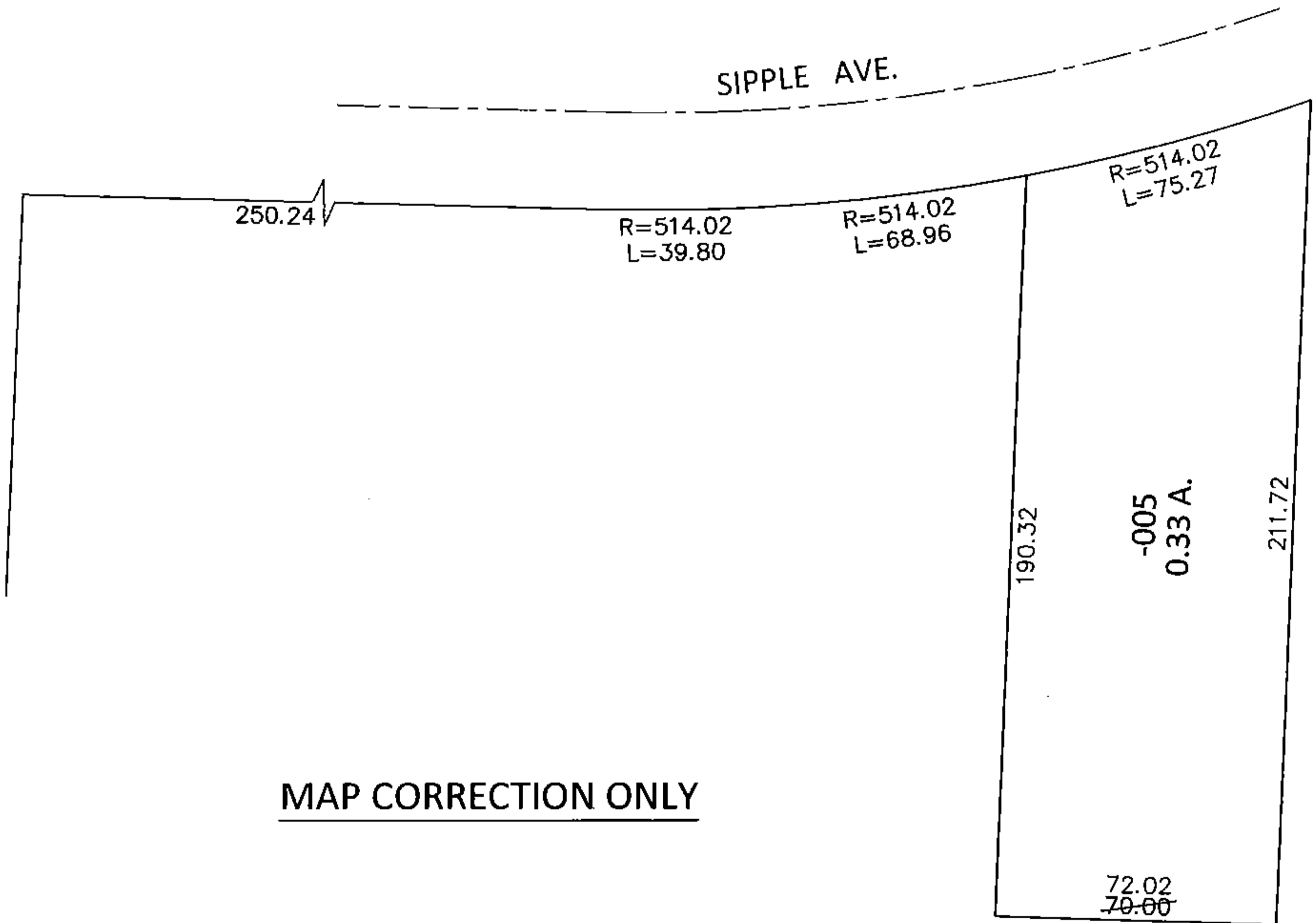
STARTING POINT: INTERSECTION OF SOUTH LINE OF SIPPLE AVE. AND EAST LINE OF MAIN ST.

15-03119-X

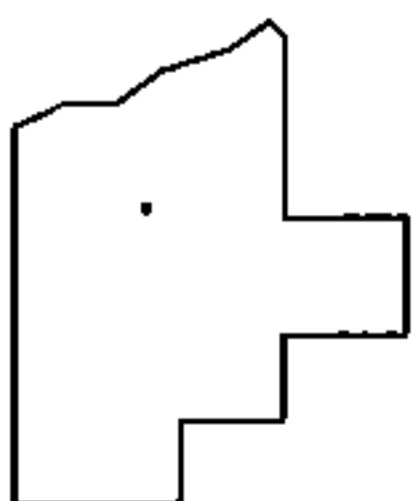


SIPPLE AVE.

MAIN ST.



MAP CORRECTION ONLY



SPLITS/DEEDS PROCESSED

LORAIN COUNTY TAX MAP DEPARTMENT  
226 MIDDLE AVE. ELYRIA, OHIO

SURVEYED BY: PATRICK A. MCGANNON

CLOSURE: .01:10,000

MAP PAGE(S): 5-00-023-A

APPROVED BY: RRM DATE: 3-4-15

SCALE: 1"= 50' PRIOR INST.: 20080278845