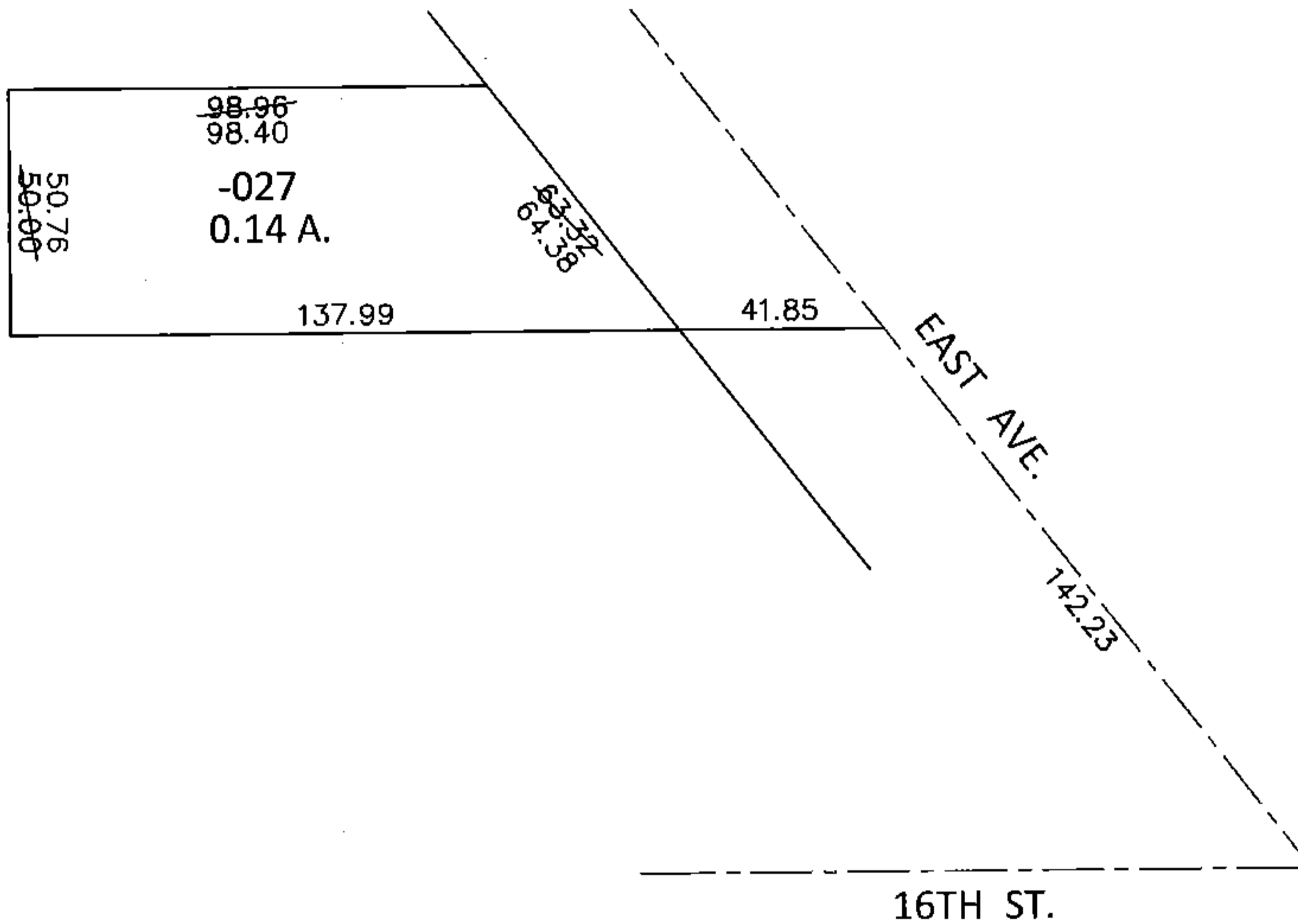
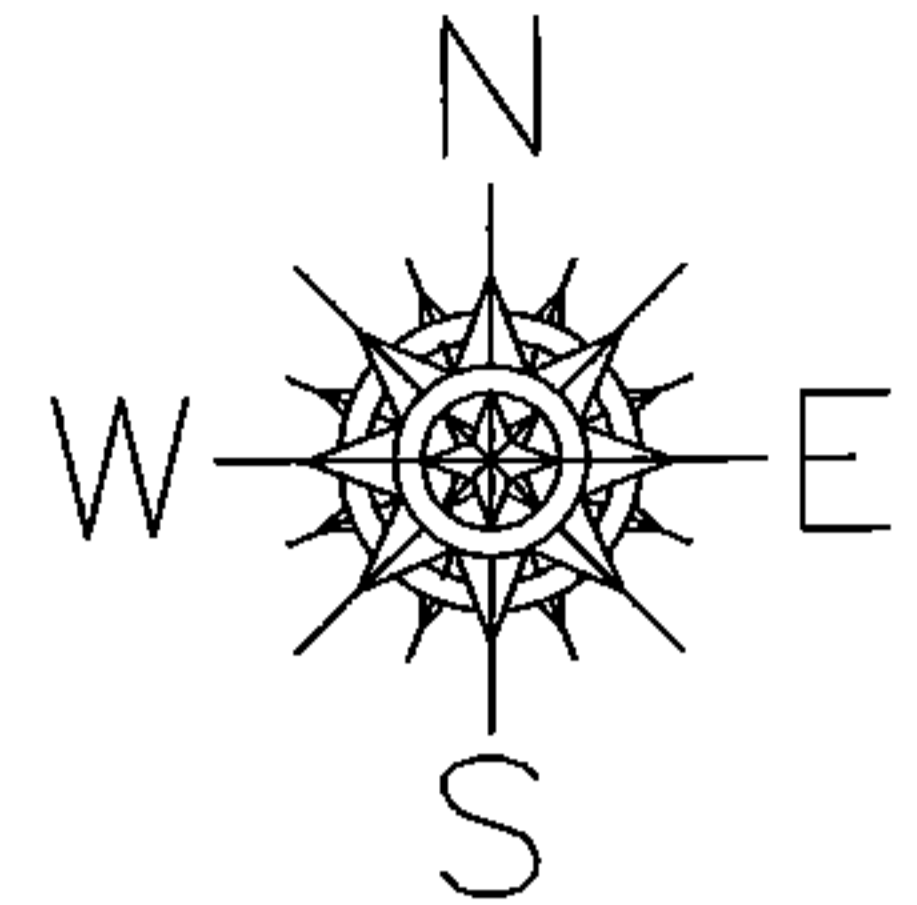


PARENT PARCEL: 06-26-003-103-027

CHILD PARCEL: _____

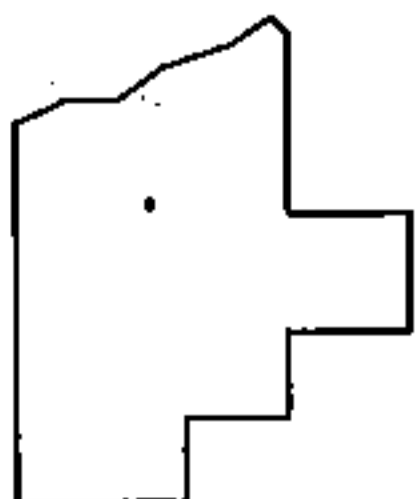
STARTING POINT: INTERSECTION OF C/L OF EAST AVE. AND C/L OF 16TH ST.

15-03118-X



FRONTAGE & DEPTH TO ACREAGE CORRECTION

06-26-003-103-027
0.14 A.
~~63.32 X 137.55~~
PER SURVEY BY T.SIMON



SPLITS/DEEDS PROCESSED
LORAIN COUNTY TAX MAP DEPARTMENT
226 MIDDLE AVE. ELYRIA, OHIO

SURVEYED BY: THOMAS A. SIMON
CLOSURE: .01:10,000
MAP PAGE(S): 6-138
APPROVED BY: RRM DATE: 3-3-15
SCALE: 1"= 50' PRIOR INST.: 20150534545