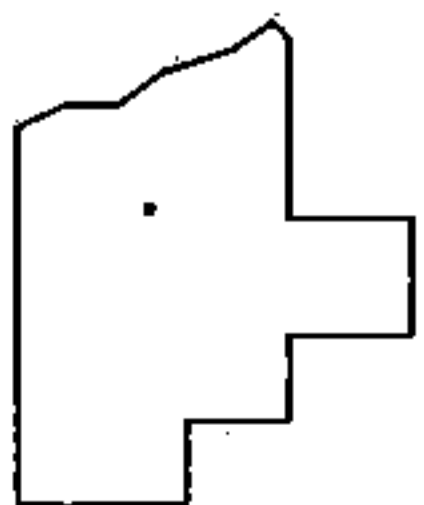
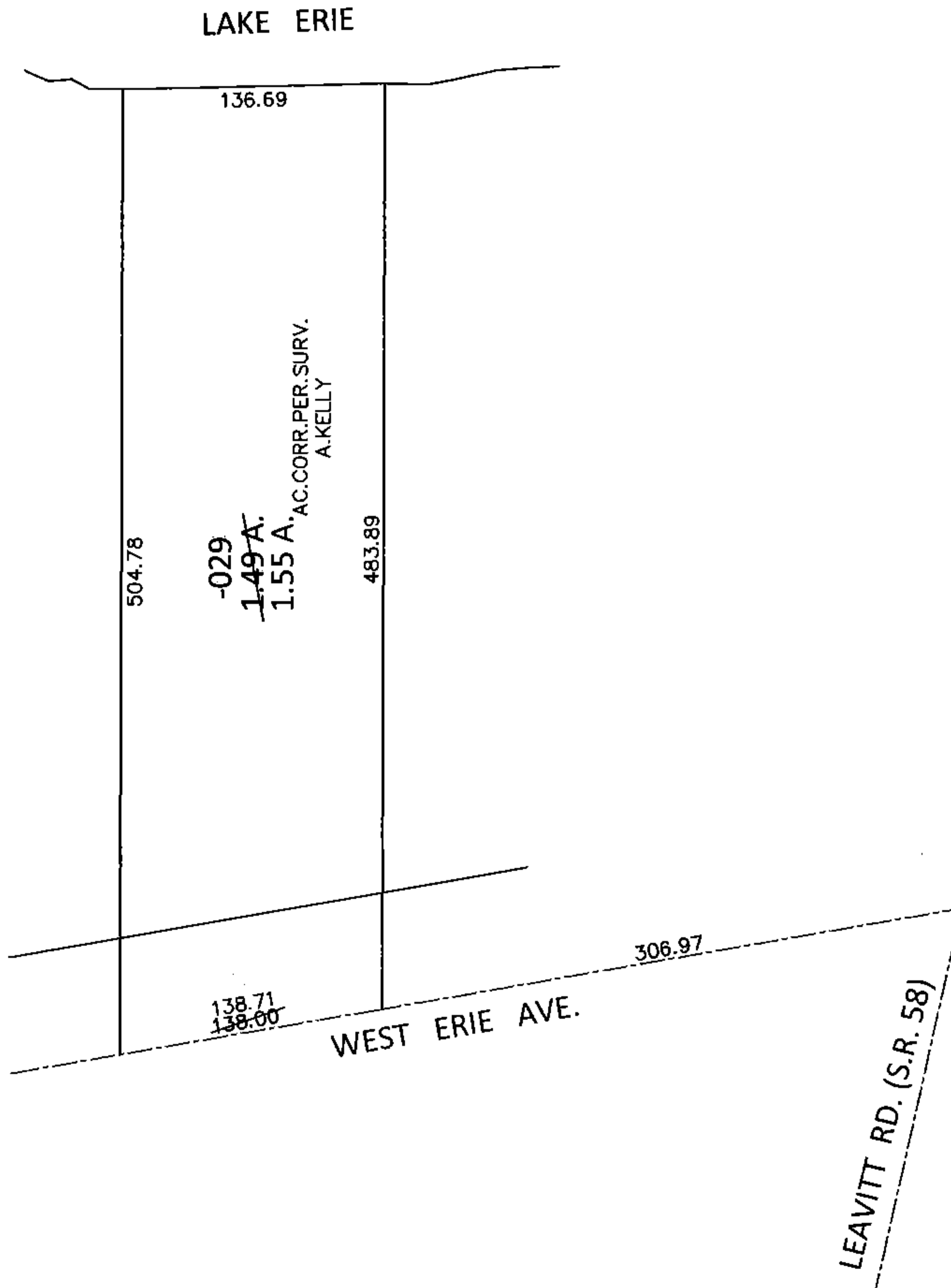
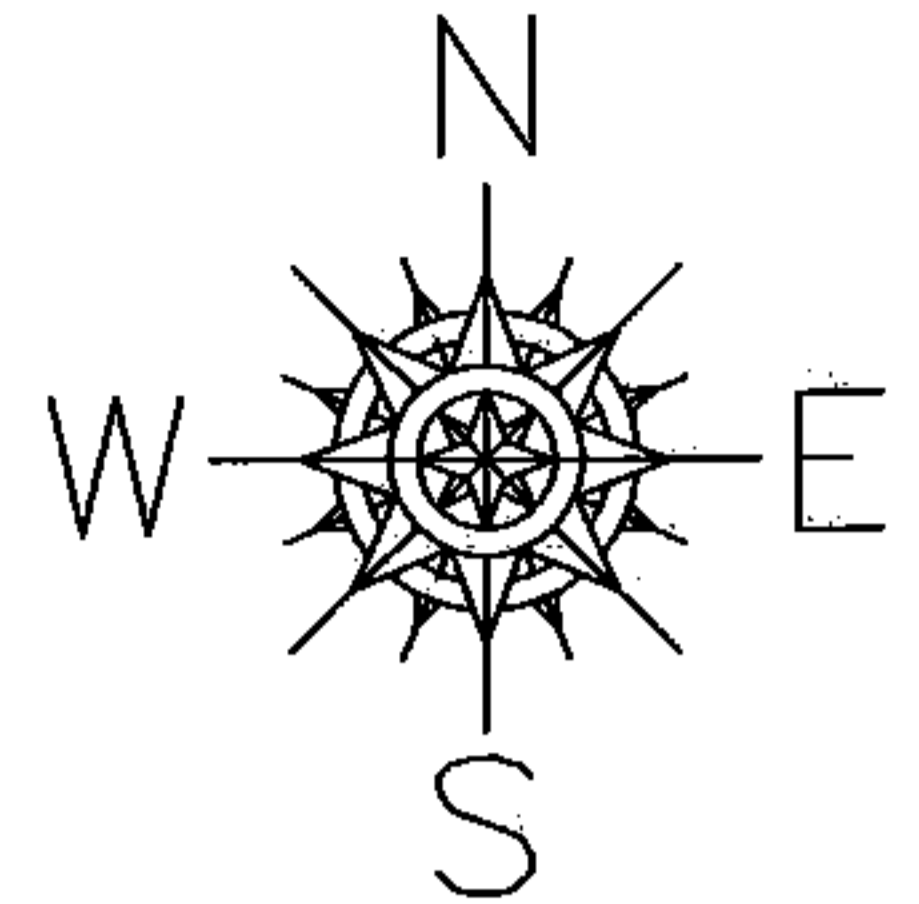


PARENT PARCEL: 02-02-023-101-029

CHILD PARCEL:

STARTING POINT: INTERSECTION OF C/L OF S.R.58 AND C/L OF WEST ERIE AVE.

15-03117-D



SPLITS/DEEDS PROCESSED

LORAIN COUNTY TAX MAP DEPARTMENT
226 MIDDLE AVE. ELYRIA, OHIO

SURVEYED BY: AMY M. KELLY

CLOSURE: .01:10.000

MAP PAGE(S): 2-02-023-A

APPROVED BY: RRM DATE: 2-19-15

SCALE: 1"=100 PRIOR INST.: 20130469606