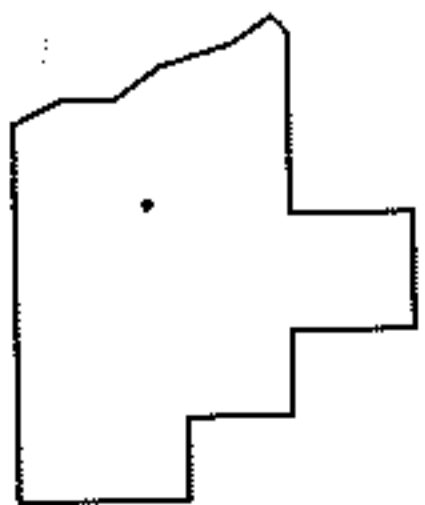
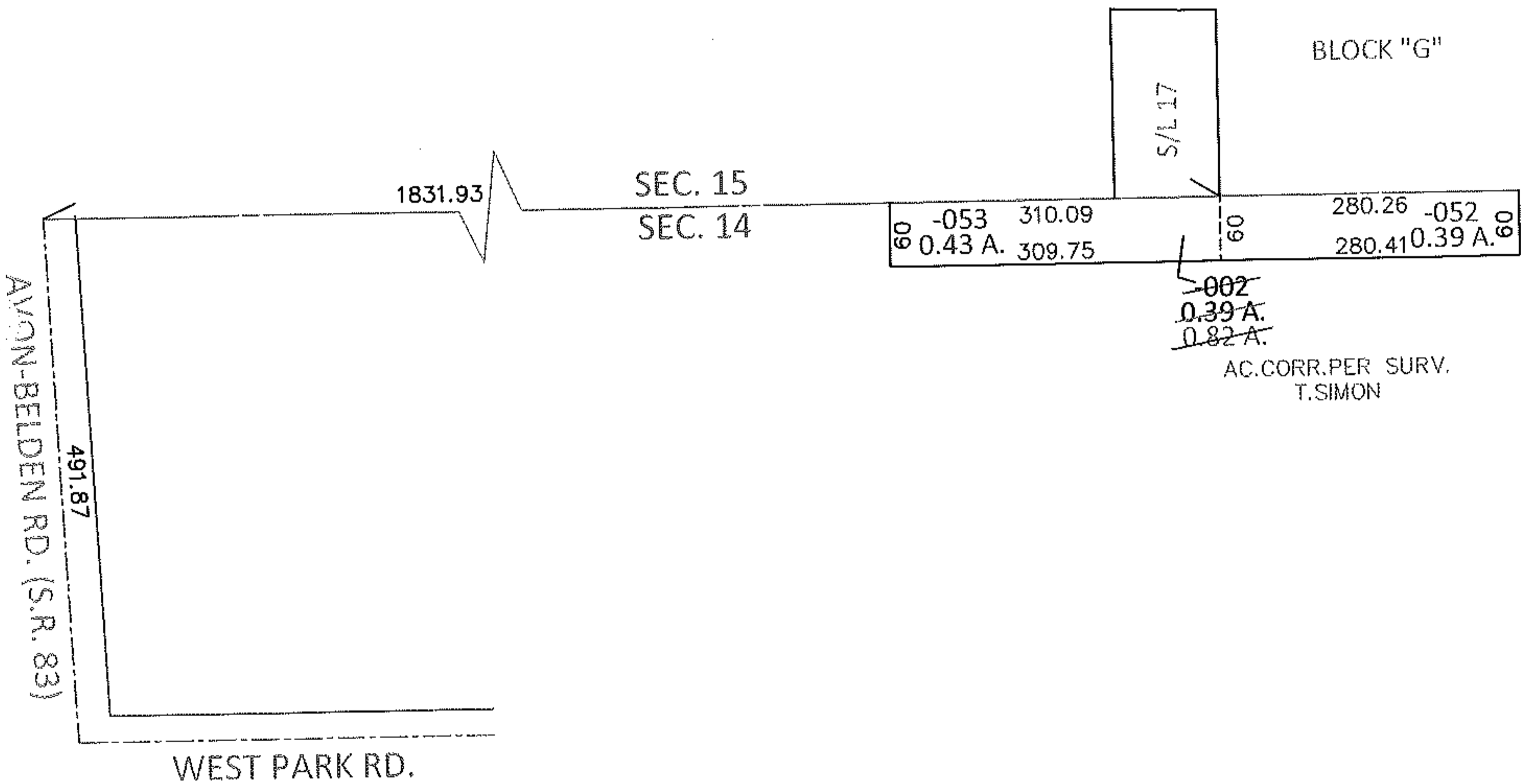
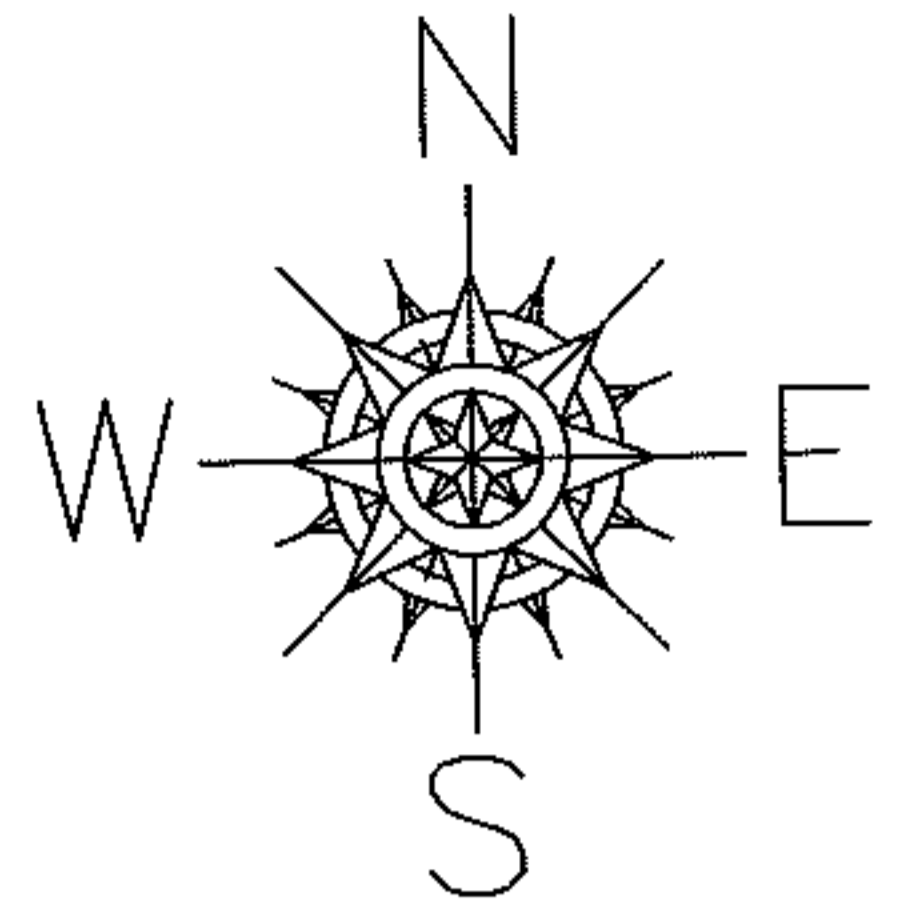


PARENT PARCEL: 04-00-014-106-002

CHILD PARCEL: 04-00-014-106-052, -053

13-03115

STARTING POINT: INTERSECTION OF C/L OF S.R.83 AND C/L OF WEST PARK RD.



SPLITS/DEEDS PROCESSED

LORAIN COUNTY TAX MAP DEPARTMENT
226 MIDDLE AVE. ELYRIA, OHIO

SURVEYED BY: THOMAS A. SIMON

CLOSURE: .00:10,000

MAP PAGE(S): 4-00-014-C

APPROVED BY: RRM DATE: 1-29-13

SCALE: 1" = 200 PRIOR INST.: 20010737747