

PARENT PARCEL: 03-00-061-107-013

CHILD PARCEL: XX-XX-XXX-XXX-XXX

STARTING POINT: XXXXXX

15-03115-C

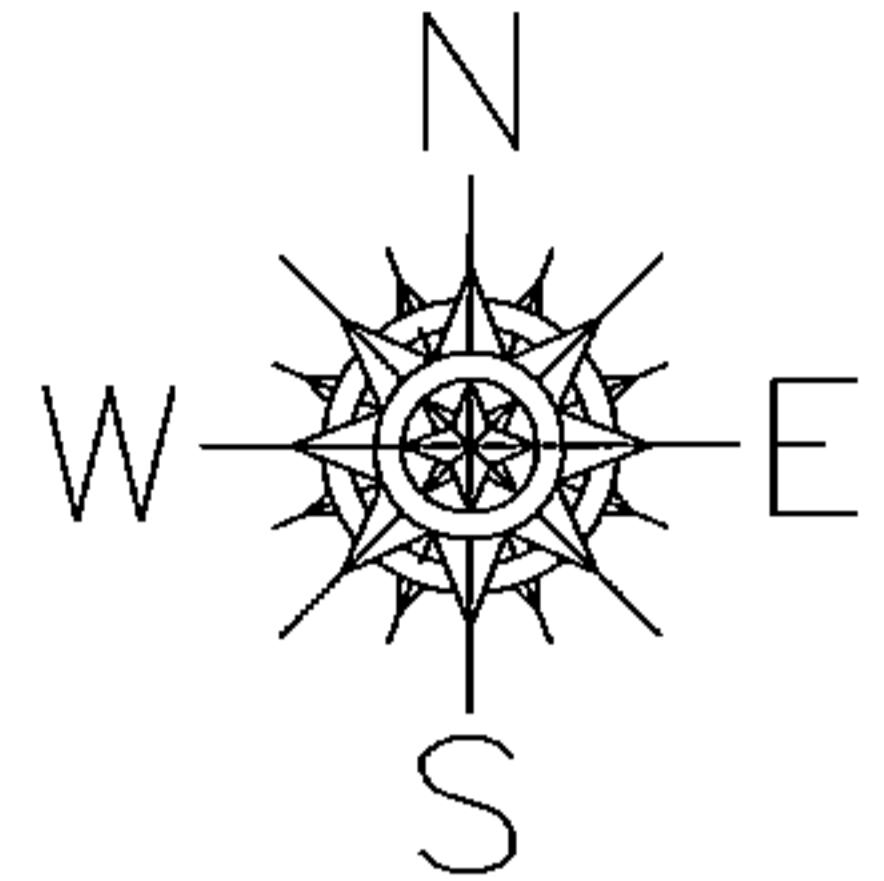
MAP & ACREAGE CORRECTION

03-00-061-107-013

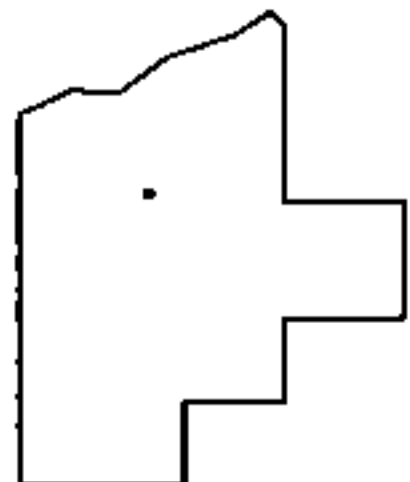
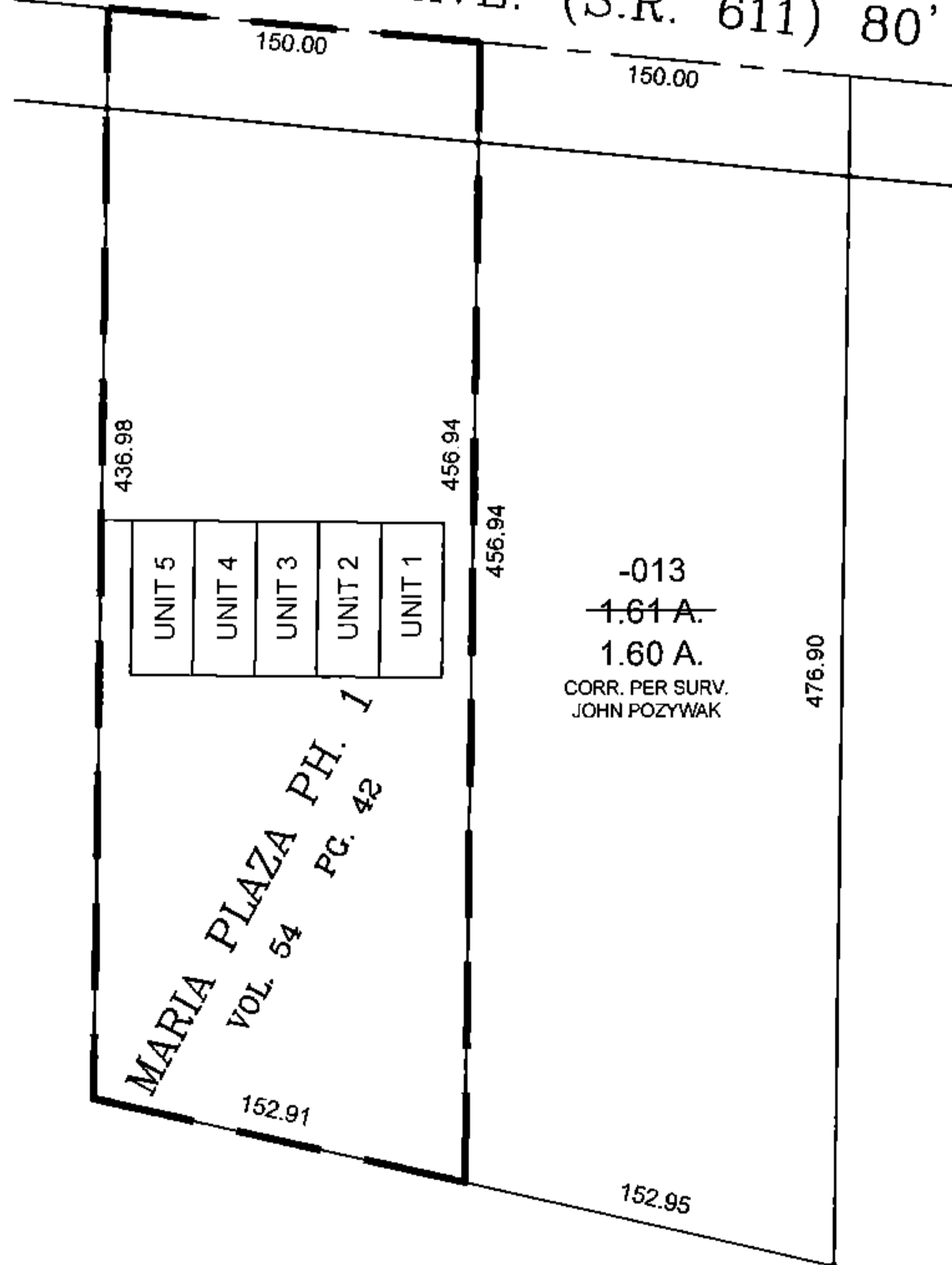
~~1.61 A.~~

1.60 A.

CORR. PER SURV.
JOHN POZYWAK



COLORADO AVE. (S.R. 611) 80'



SPLITS/DEEDS PROCESSED

LORAIN COUNTY TAX MAP DEPARTMENT
226 MIDDLE AVE. ELYRIA, OHIO

SURVEYED BY: JOHN POZYWAK
 CLOSURE: 0.01 : 10,000
 MAP PAGE(S): 03-00-061
 APPROVED BY: TJS DATE: 2/23/15
 SCALE: 1" = 100 PRIOR INSTRUMENT: OR 1062/840