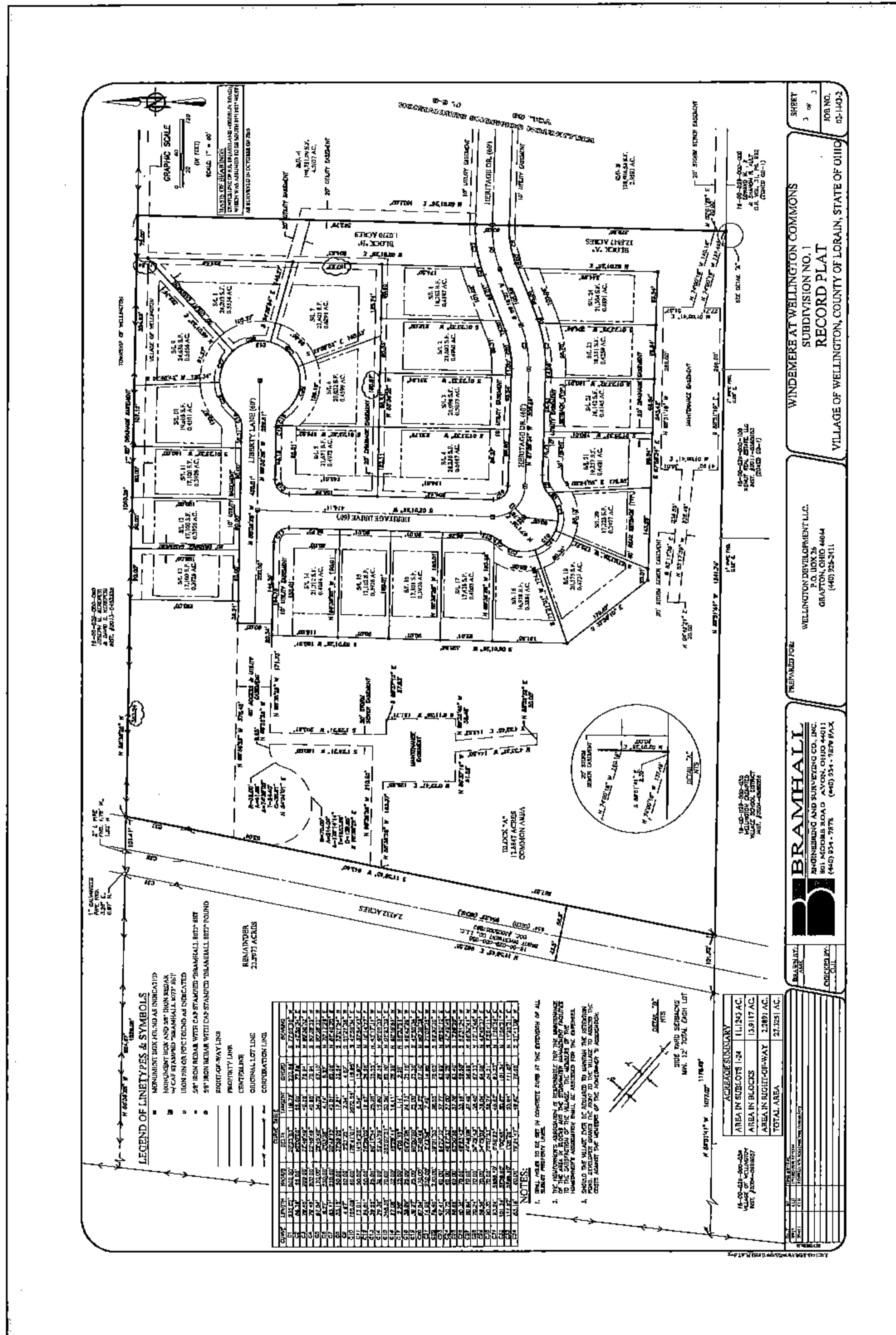


PARENT PARCEL: 18-00-029-000-114, -115, -117, & -133

CHILD PARCEL: XX-XX-XXX-XXX-XXX

STARTING POINT: XXXXXX

15-03114-C



2 OF 2

**SPLITS/DEEDS PROCESSED**

LORAIN COUNTY TAX MAP DEPARTMENT  
 226 MIDDLE AVE. ELYRIA, OHIO

SURVEYED BY: AMY KELLY  
 CLOSURE: XXXXXX  
 MAP PAGE(S): 18-00-029  
 APPROVED BY: TJS DATE: 2/17/15  
 SCALE: 1" = 100 PRIOR INST.: DV XXXX/XXX