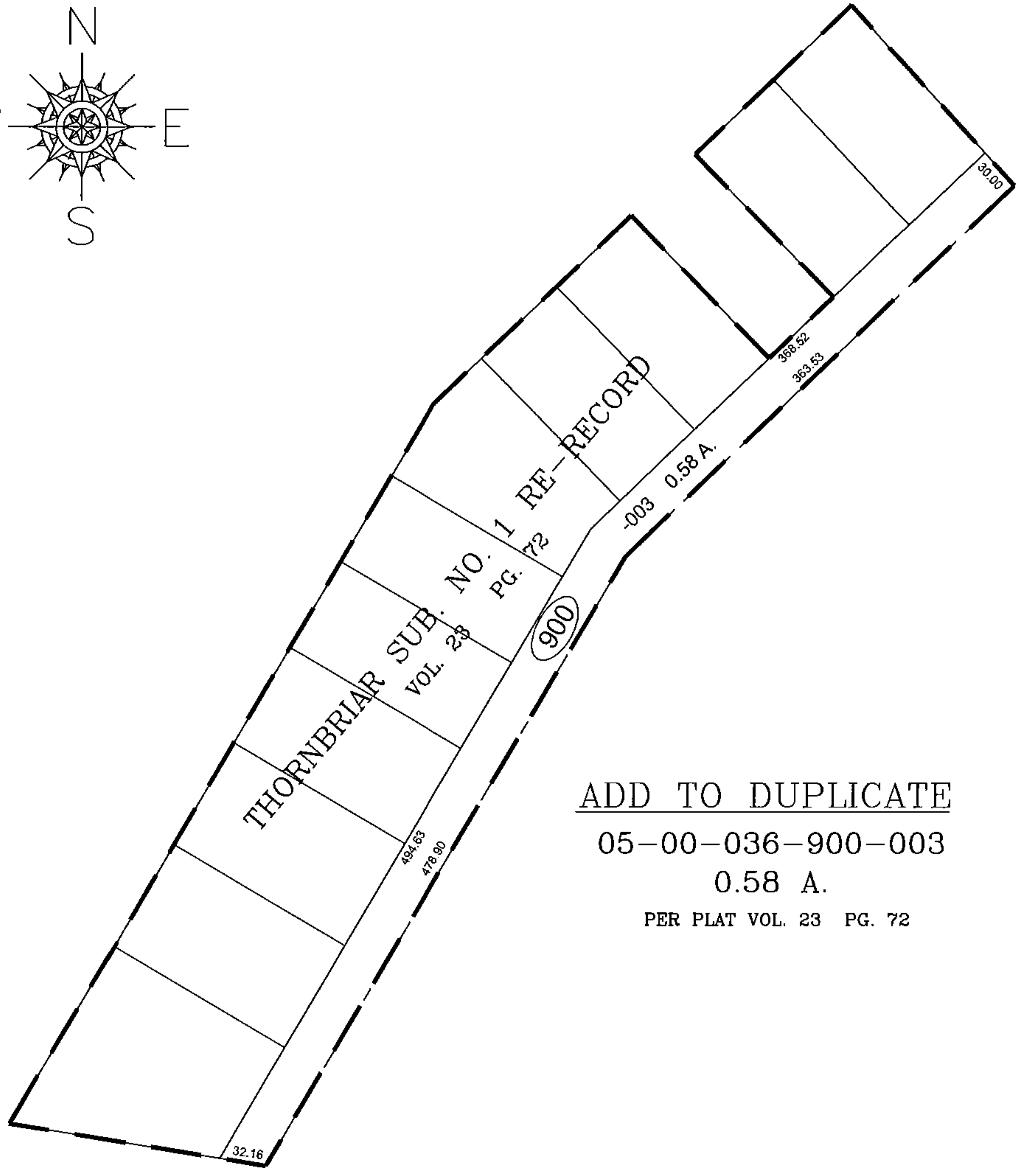
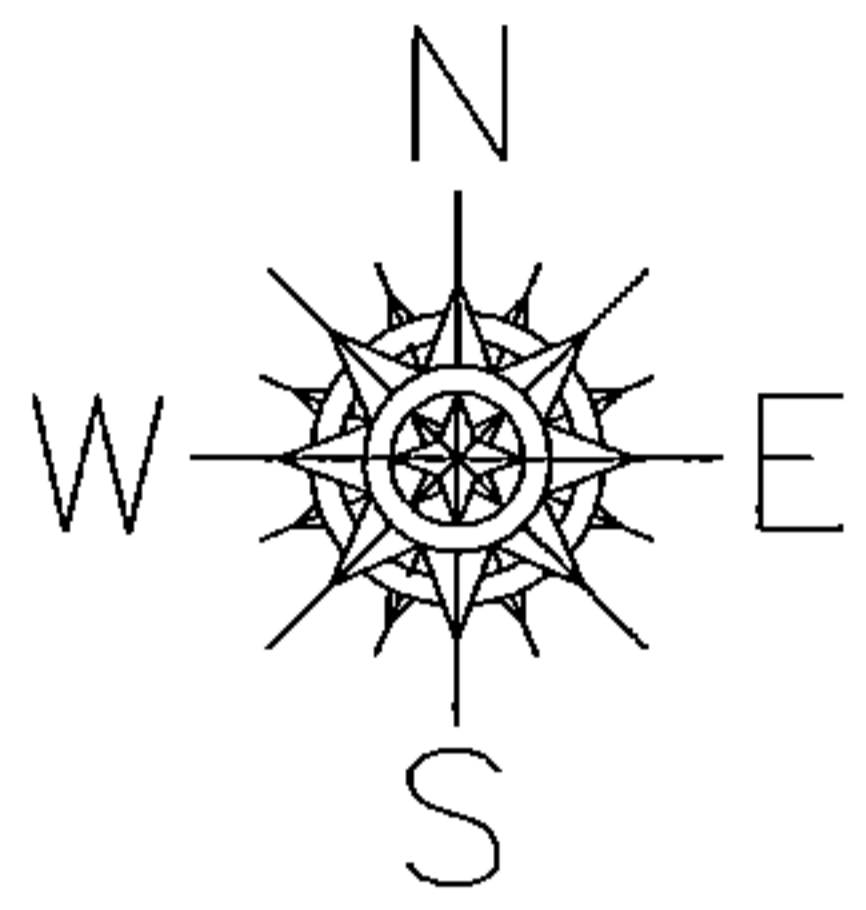
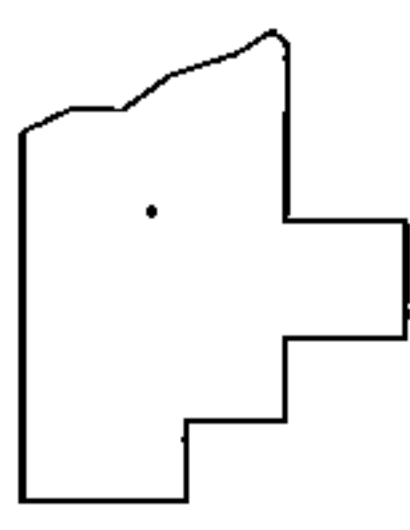


PARENT PARCEL: ADD TO DUPLICATE
CHILD PARCEL: 05-00-036-900-003
STARTING POINT: THORNBRIAR SUB. NO. 1 RE-RECORD PLAT VOL. 23 PG. 72

15-03112-A



ADD TO DUPLICATE
05-00-036-900-003
0.58 A.
PER PLAT VOL. 23 PG. 72



SPLITS/DEEDS PROCESSED
LORAIN COUNTY TAX MAP DEPARTMENT
226 MIDDLE AVE. ELYRIA, OHIO

SURVEYED BY: ARNOLD KOEPP
CLOSURE: NA
MAP PAGE(S): 05-00-036
APPROVED BY: TJS DATE: 2/12/15
SCALE: 1" = 100' PRIOR INSTRUMENT: DV XXXX/XXX