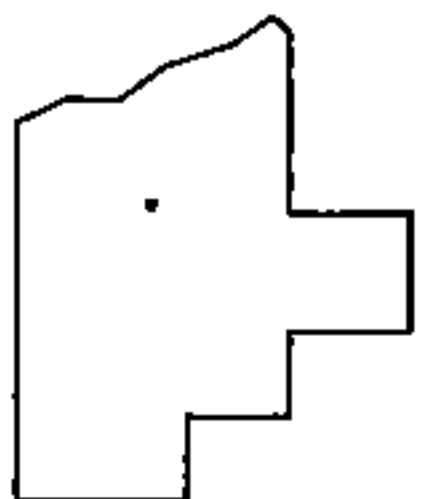
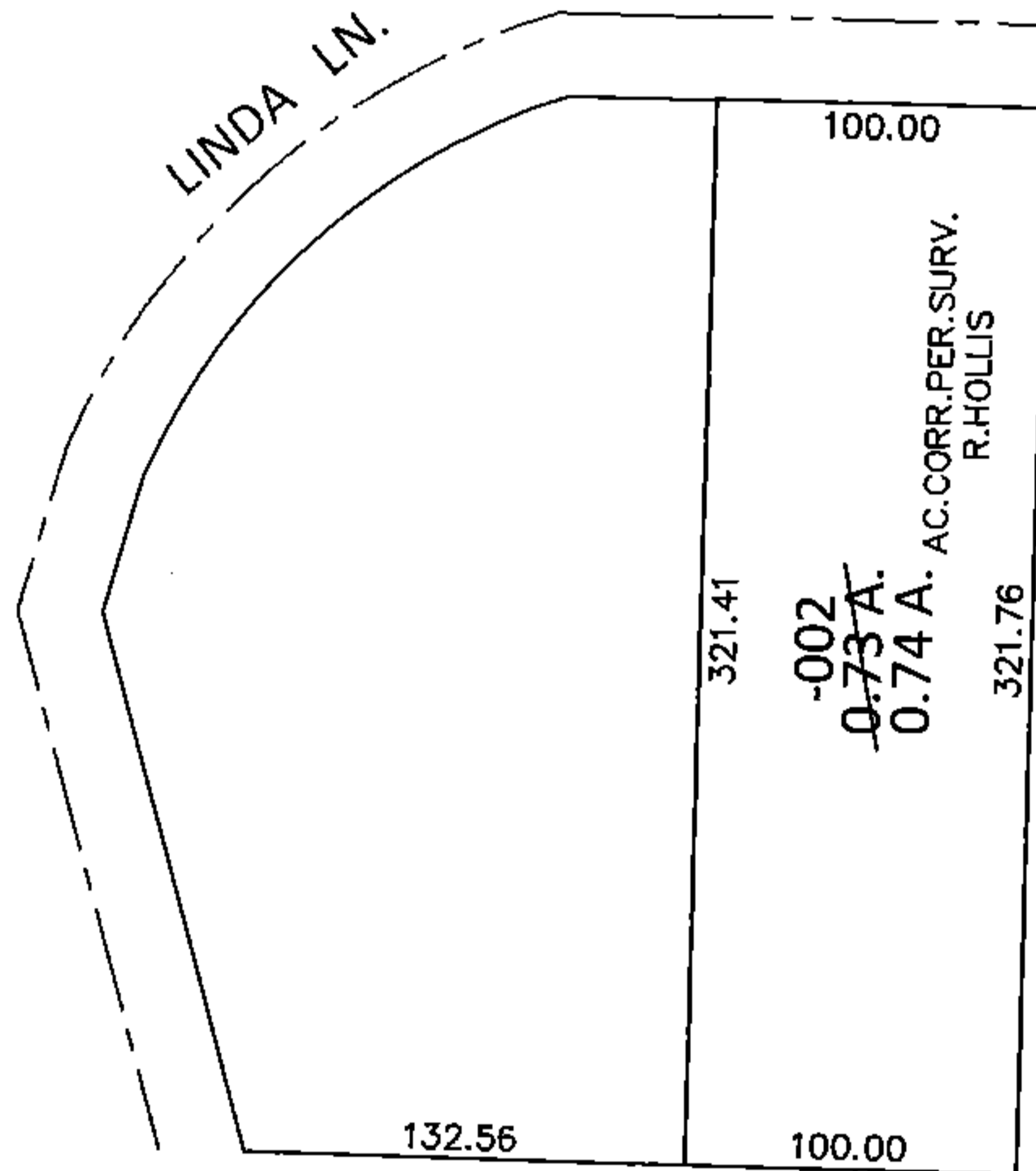
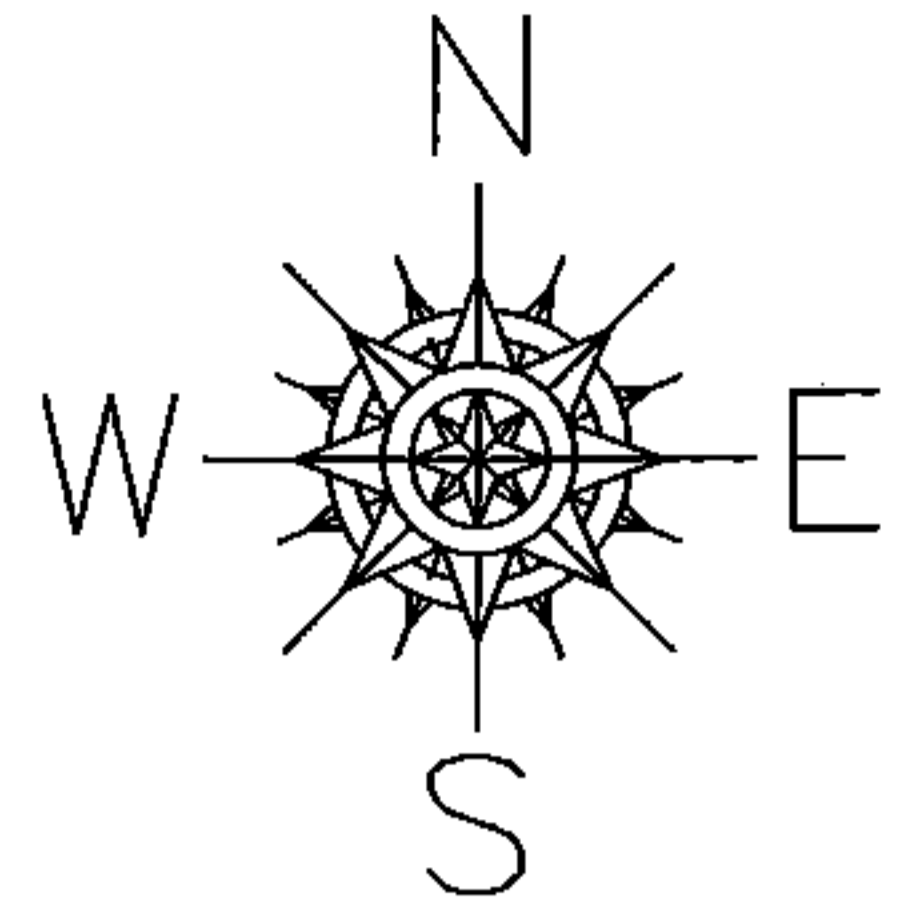


PARENT PARCEL: 03-00-066-103-002

CHILD PARCEL: _____

STARTING POINT: INTERSECTION OF EAST LINE OF LINDA LN. AND NORTH LINE OF OAK POINT SUB. (VOL.12 PG.14)

15-03110-A



SPLITS/DEEDS PROCESSED

LORAIN COUNTY TAX MAP DEPARTMENT
226 MIDDLE AVE. ELYRIA, OHIO

SURVEYED BY: RAY E. HOLLIS

CLOSURE: .01:10,000

MAP PAGE(S): 3-00-066-A

APPROVED BY: RRM DATE: 2-11-15

SCALE: 1"=100 PRIOR INST.: OR 672/820