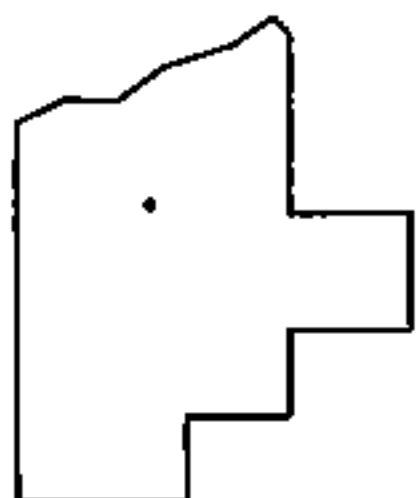
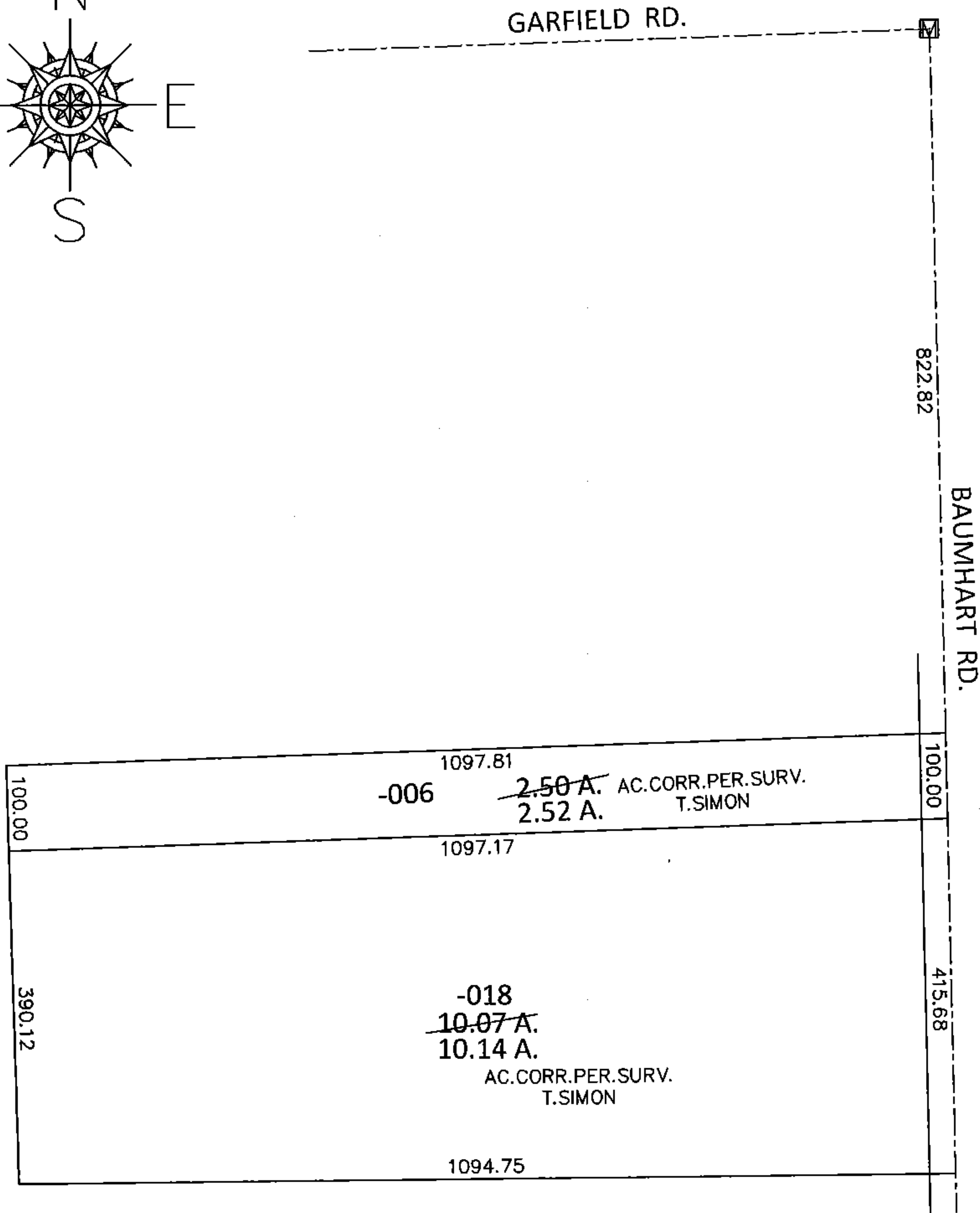
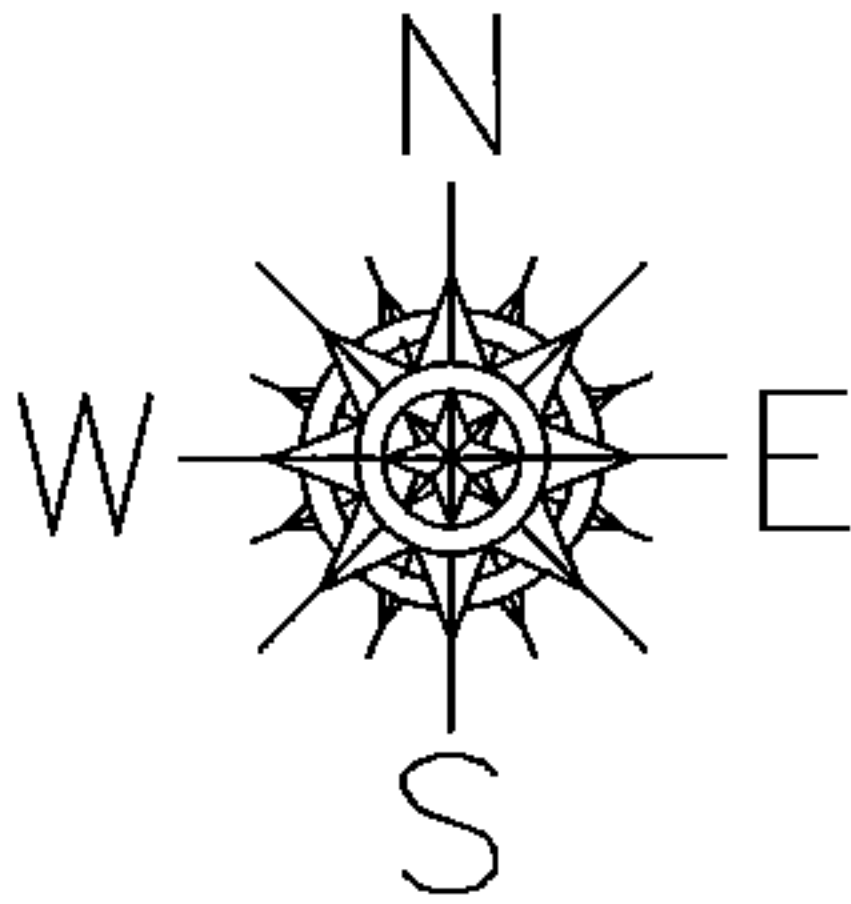


PARENT PARCEL: 08-15-016-000-006, -018

CHILD PARCEL: _____

15-03109-A

STARTING POINT: AT A MON BOX AT THE INTERSECTION OF C/L OF GARFIELD RD. AND C/L OF BAUMHART RD.



SPLITS/DEEDS PROCESSED

LORAIN COUNTY TAX MAP DEPARTMENT
226 MIDDLE AVE. ELYRIA, OHIO

SURVEYED BY: THOMAS A. SIMON

CLOSURE: .00:10,000

MAP PAGE(S): 8-A

APPROVED BY: RRM DATE: 2-9-15

SCALE: 1"=200 PRIOR INST.: 20090296783