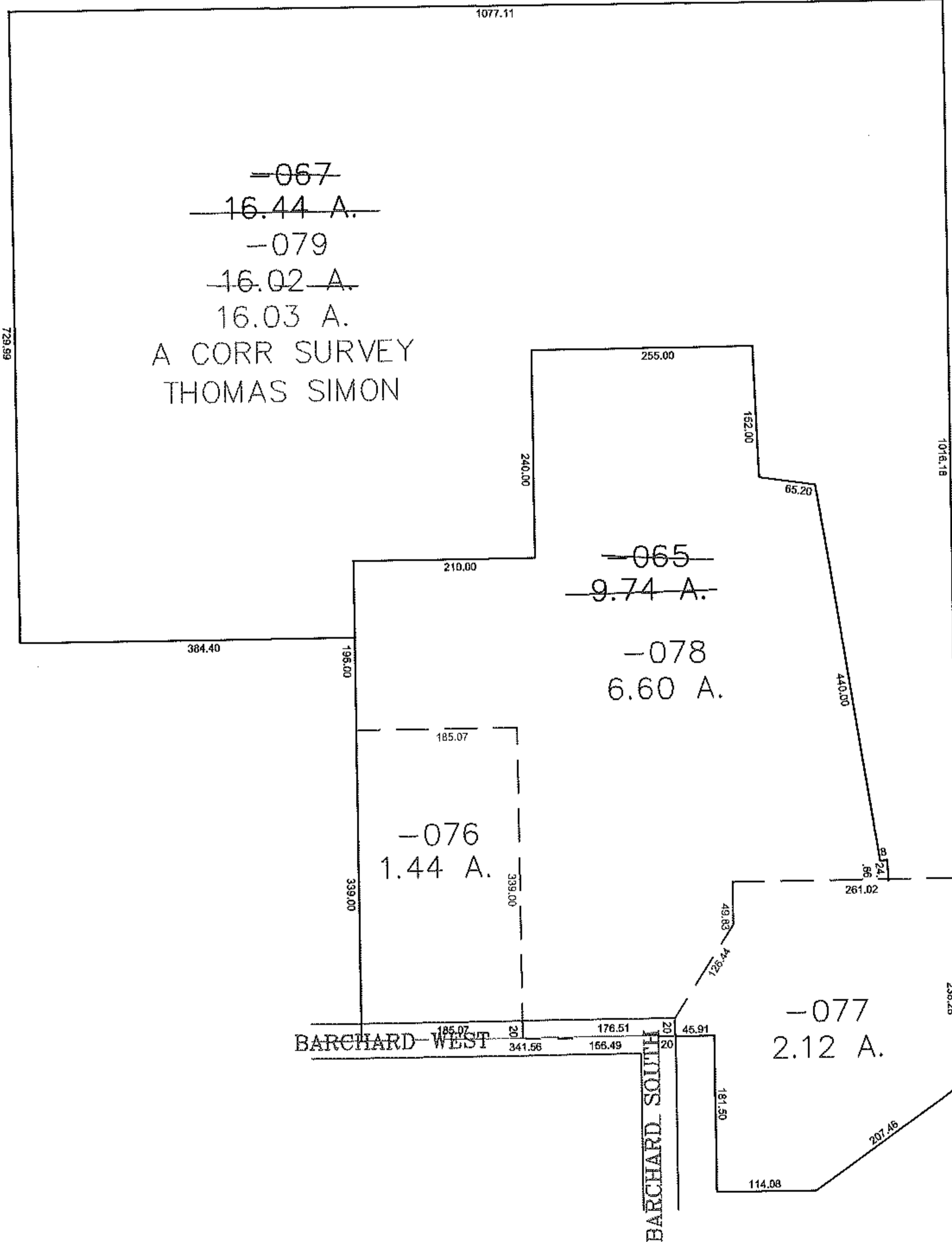
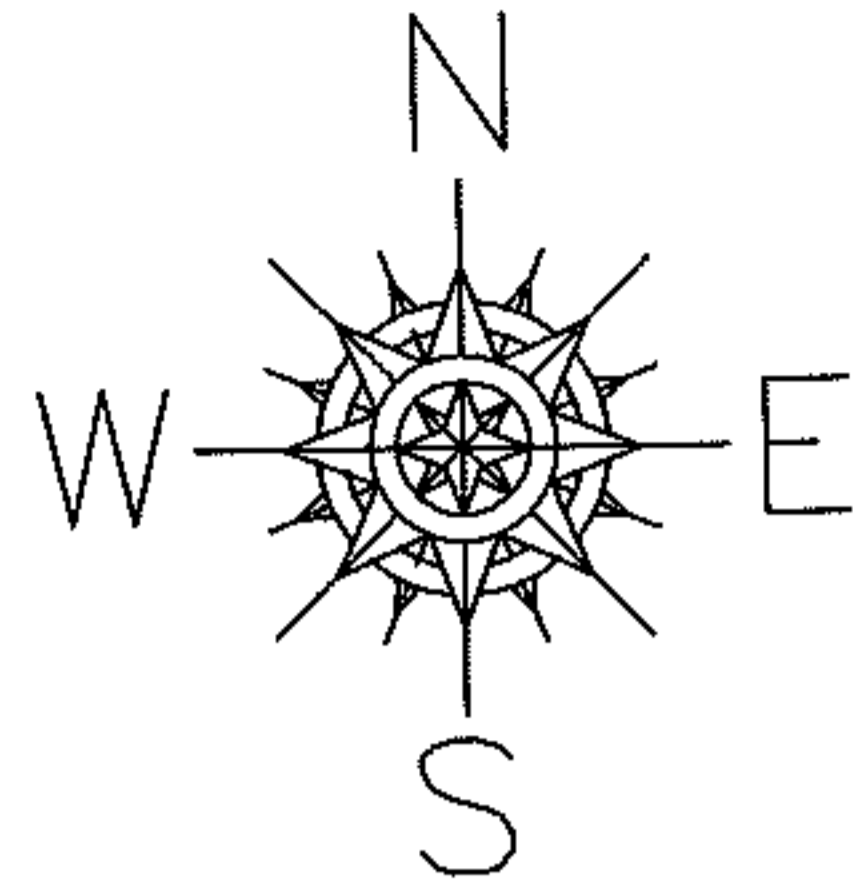


PARENT PARCEL: 11-00-081-102-065, -067

CHILD PARCEL: 11-00-081-102-076 THRU -079

STARTING POINT: CENTERLINE OF BARCHARD ST WEST & BARCHARD ST SOUTH

12-03108



~~-067~~
~~16.44 A.~~
~~-079~~
~~16.02 A.~~
16.03 A.
A CORR SURVEY
THOMAS SIMON

~~-065~~
~~9.74 A.~~

-078
6.60 A.

-076
1.44 A.

-077
2.12 A.

SPLITS/DEEDS PROCESSED
LORAIN COUNTY TAX MAP DEPARTMENT
226 MIDDLE AVE. ELYRIA, OHIO

SURVEYED BY: THOMAS SIMON
CLOSURE: 0.00 : 10.000
MAP PAGE(S): 11-00-081
APPROVED BY: JAH DATE: 12/21/2012
SCALE: 1" = 200 PRIOR INSTRUMENT: 20090314990