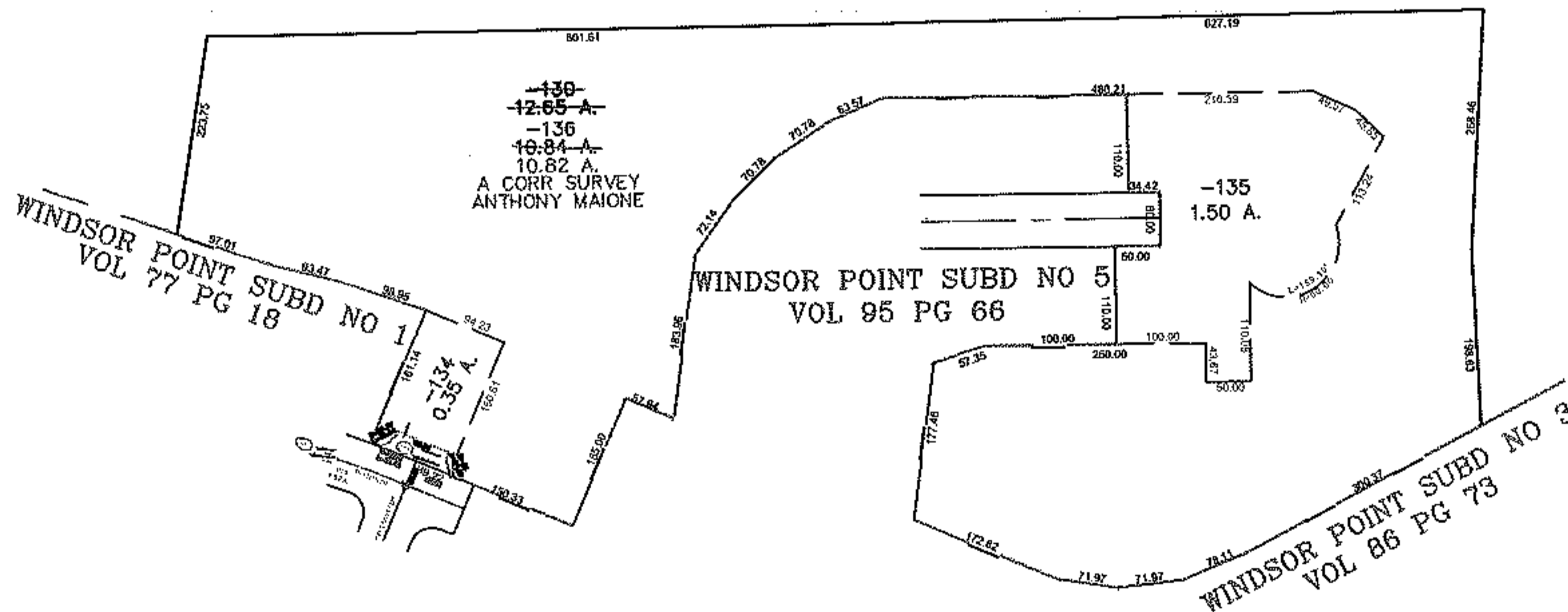
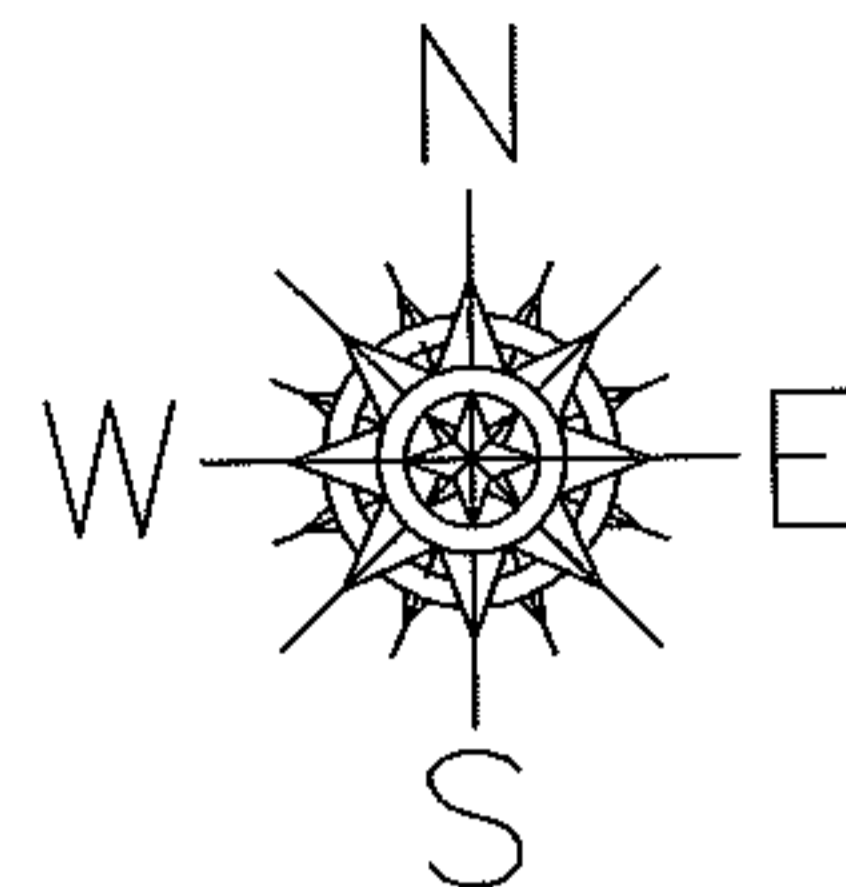


PARENT PARCEL: 07-00-042-115-130, 07-00-042-115-133

CHILD PARCEL: 07-00-042-115-134, -135, -136

STARTING POINT: SOUTHEASTERLY CORNER OF SUBLOT 13 IN WINDSOR POINT SUBD NO 7

12-03099



**SPLITS/DEEDS PROCESSED**

LORAIN COUNTY TAX MAP DEPARTMENT  
226 MIDDLE AVE. ELYRIA, OHIO

SURVEYED BY: ANTHONY MAIONE  
CLOSURE: 0.00 : 10.000  
MAP PAGE(S): 07-00-042-A  
APPROVED BY: JAH DATE: 12-5-2012  
SCALE: 1" = 300 PRIOR INSTRUMENT: 20030889495