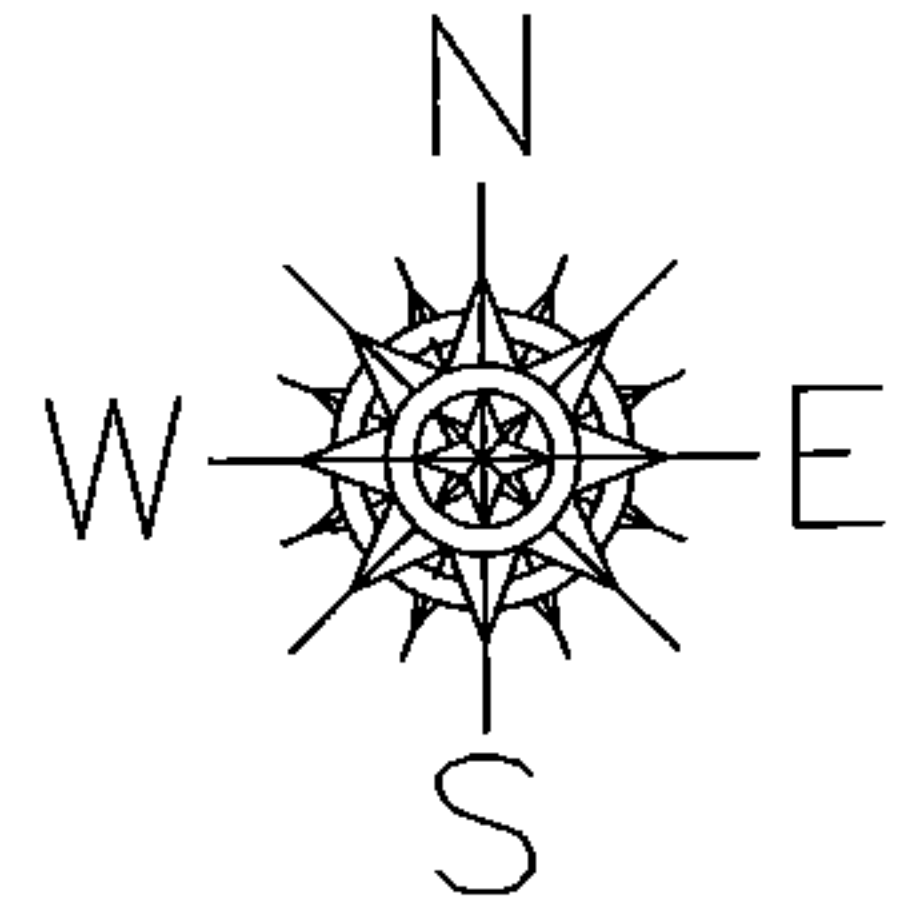


PARENT PARCEL: 09-00-075-110-010

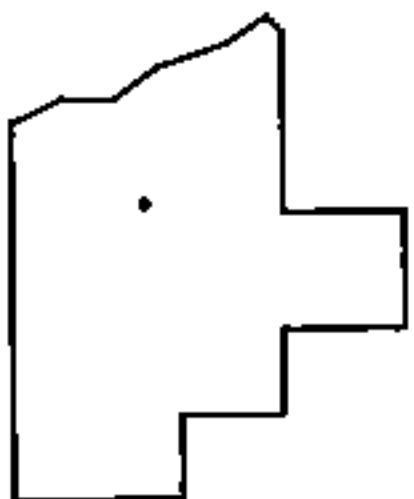
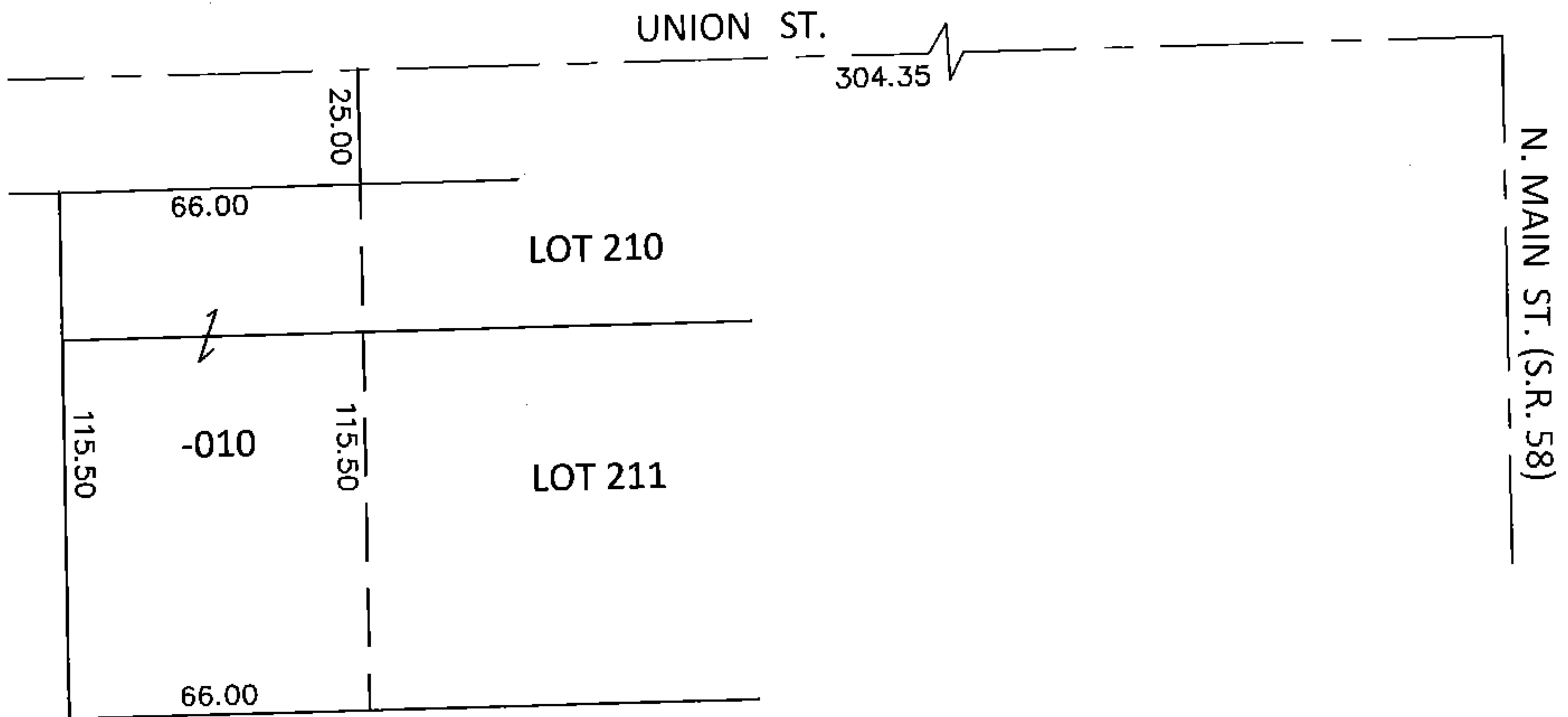
CHILD PARCEL:

STARTING POINT: INTERSECTION OF C/L OF UNION ST. AND C/L OF S.R. 58

15-03095-A



NO MAP CHANGES



SPLITS/DEEDS PROCESSED

LORAIN COUNTY TAX MAP DEPARTMENT  
226 MIDDLE AVE. ELYRIA, OHIO

SURVEYED BY: DALE R. HAYWOOD

CLOSURE: .00:10,000

MAP PAGE(S): 9-00-075-A

APPROVED BY: RRM DATE: 1-21-15

SCALE: 1" = 50' PRIOR INST.: 20140516931