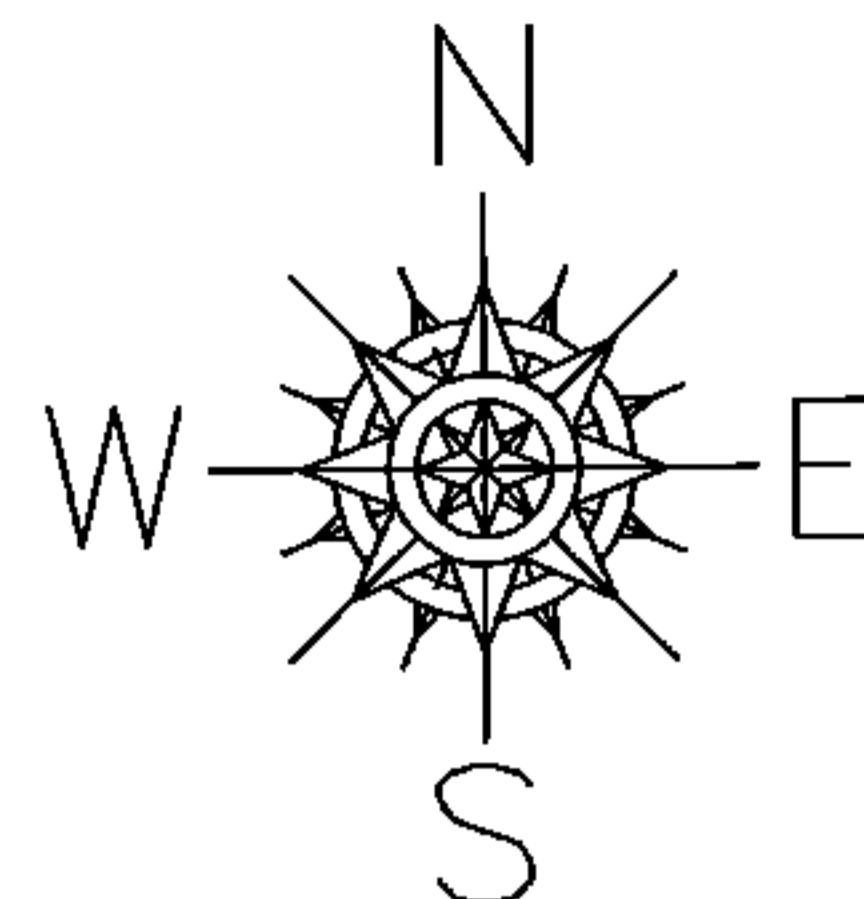


PARENT PARCEL: 03-00-096-106-026, -027

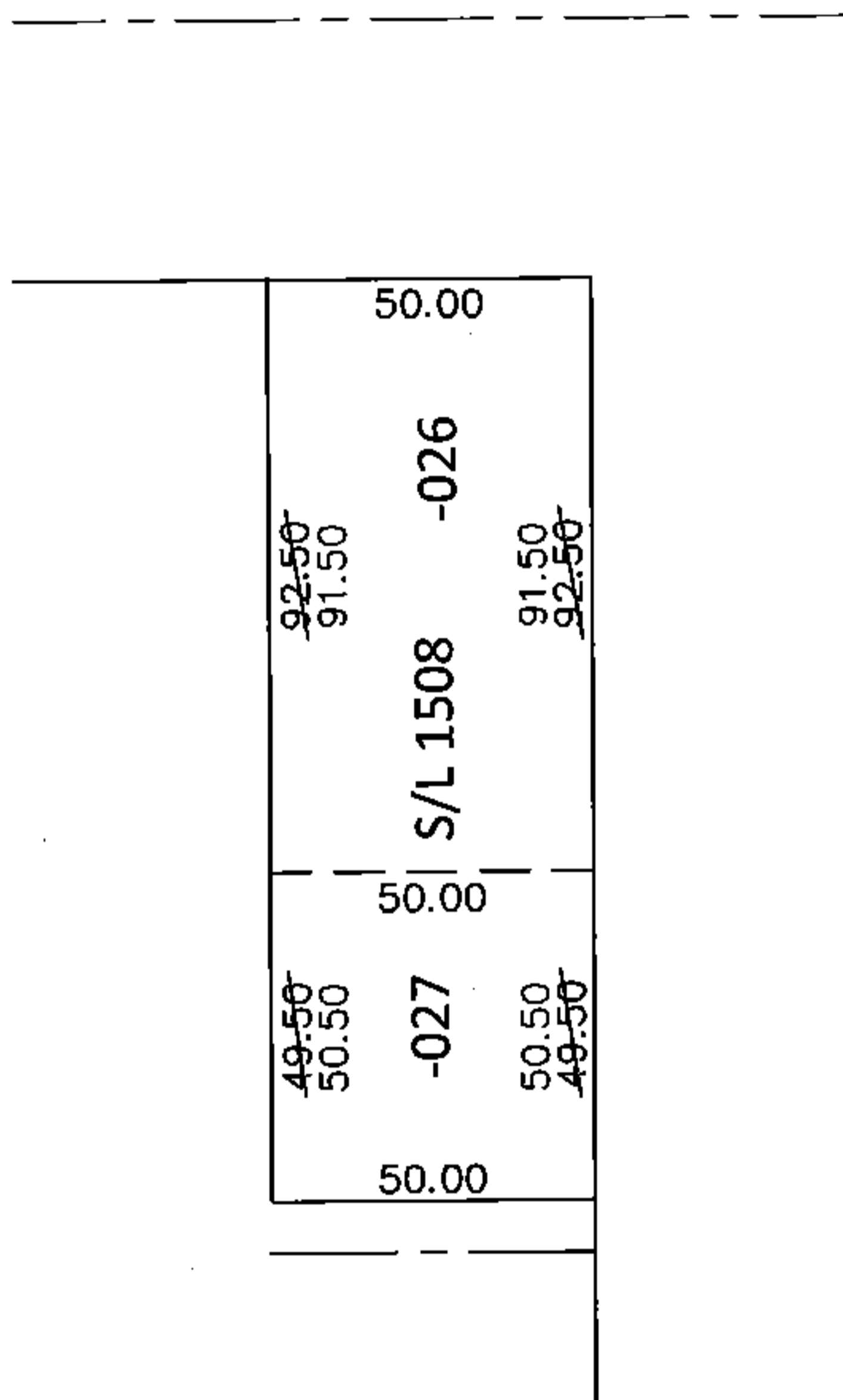
CHILD PARCEL: \_\_\_\_\_

STARTING POINT: S/L 1508 IN SHEFFIELD LAND CO'S ADD. SUB. NO.2 (VOL. 4 PG. 32)

15-03094-C



E. 33RD ST.



DEPTH CORRECTION

03-00-096-106-026

91.50

~~50 X 92.50~~

PER PRIOR DEEDS

FRONTAGE CORRECTION

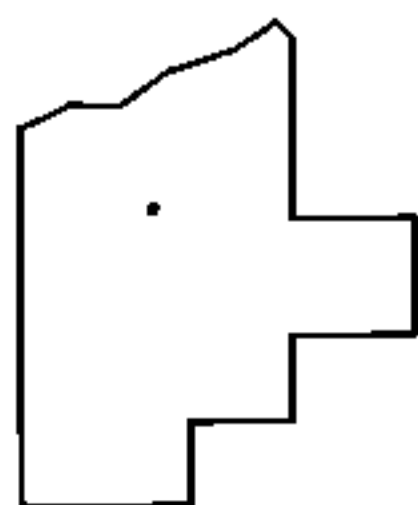
03-00-096-106-027

50.50

~~49.50 X 50~~

PER PRIOR DEEDS

REMOVE SURVEY BEFORE NEXT TRANS



SPLITS/DEEDS PROCESSED

LORAIN COUNTY TAX MAP DEPARTMENT  
226 MIDDLE AVE. ELYRIA, OHIO

SURVEYED BY: N/A

CLOSURE: N/A

MAP PAGE(S): 3-00-096-A

APPROVED BY: RRM DATE: 1-20-15

SCALE: 1" = 50' PRIOR INST.: 20140501297