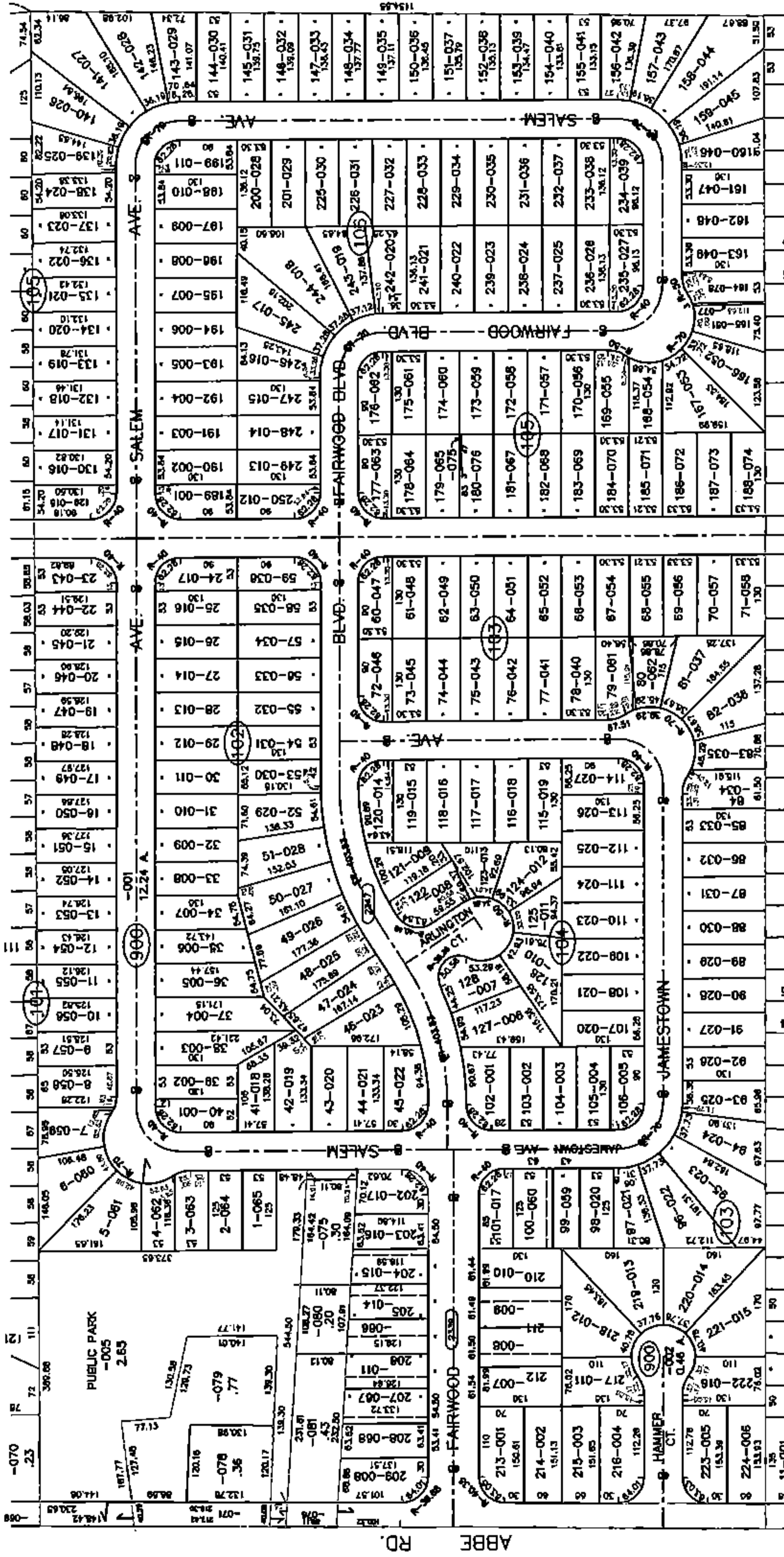


PARENT PARCEL: ADD TO DUPLICATE

CHILD PARCEL: 06-25-028-900-001 & -002

STARTING POINT: XXXXXX

15-03093-A



ADD TO DUPLICATE

ADD TO DUPLICATE

06-25-028-900-002

06-25-028-900-001

0.46 A.

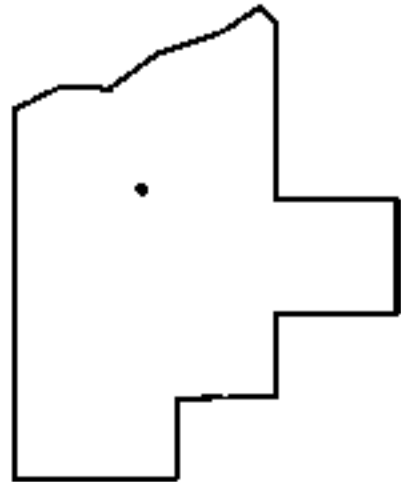
12.24 A.

PER PLAT

PER PLAT

VOL. 22 PG. 49

VOL. 23 PG. 18



SPLITS/DEEDS PROCESSED
 LORAIN COUNTY TAX MAP DEPARTMENT
 226 MIDDLE AVE. ELYRIA, OHIO

SURVEYED BY: RAY HOLLIS
 CLOSURE: NA
 MAP PAGE(S): 06-25-028
 APPROVED BY: TJS DATE: 1/20/15
 SCALE: 1"= 300 PRIORITY: DV XXXX/XXX