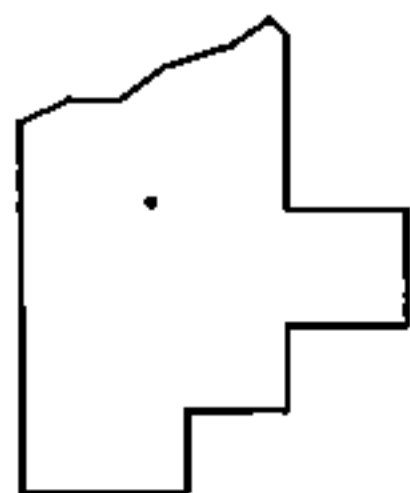
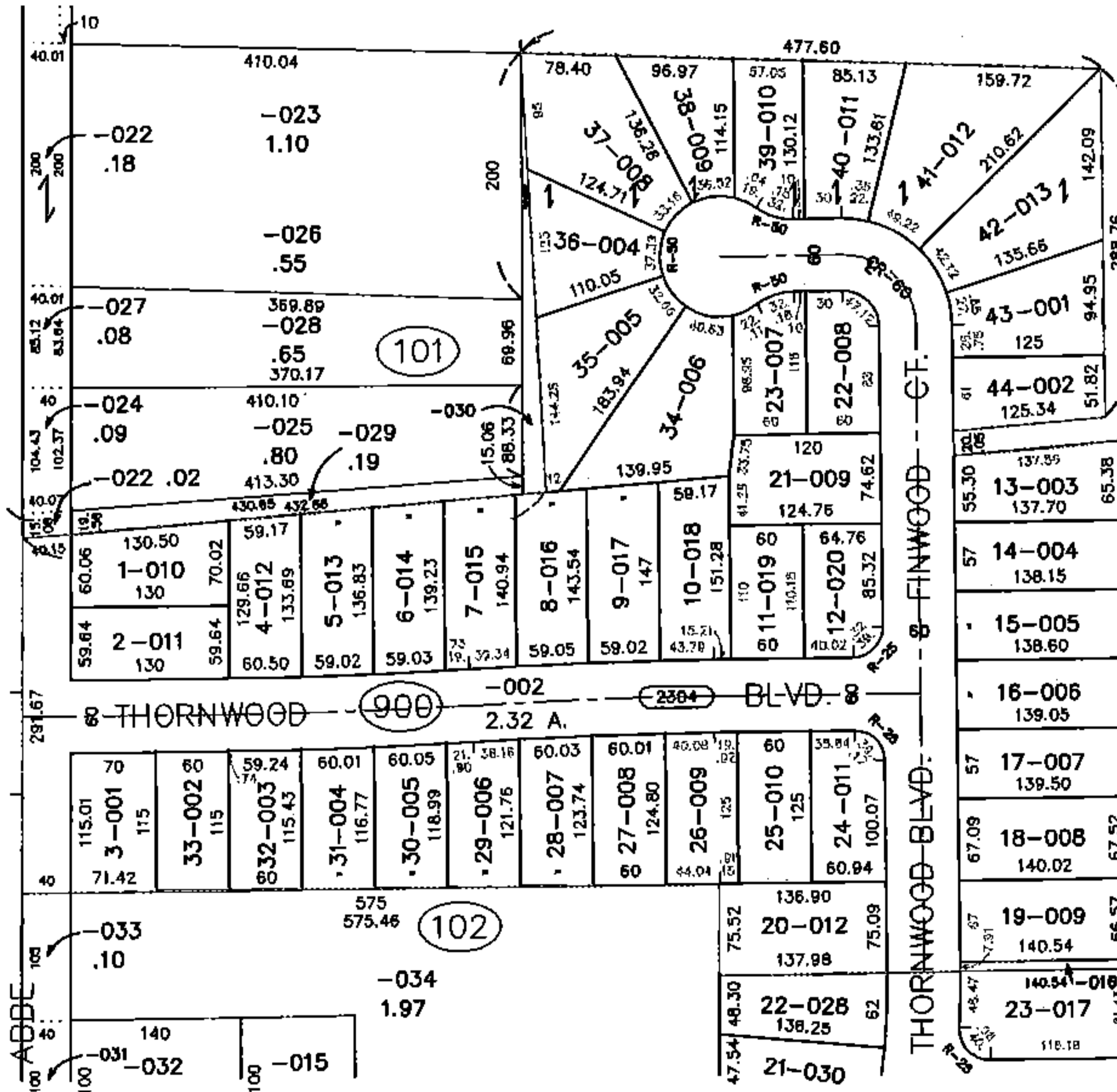
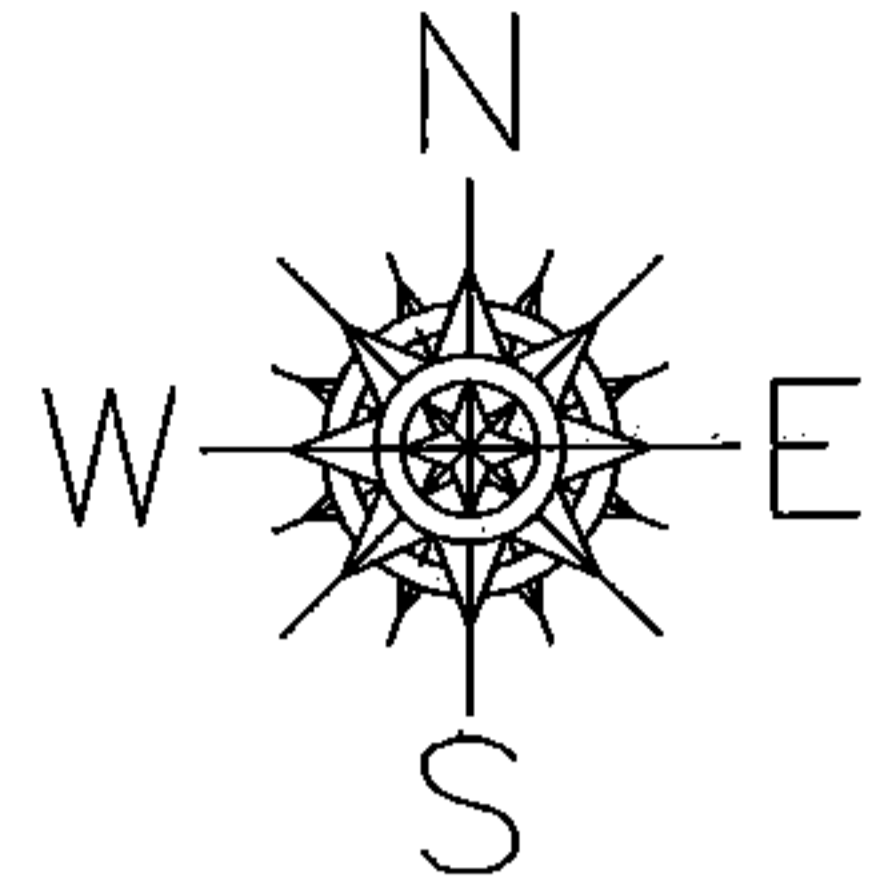


PARENT PARCEL: ADD TO DUPLICATE
 CHILD PARCEL: 06-23-030-900-002
 STARTING POINT: XXXXXX

15-03091-A

ADD TO DUPLICATE
 06-23-030-900-002
 2.32 A.
 PER PV. 22 PG. 49



SPLITS/DEEDS PROCESSED
 LORAIN COUNTY TAX MAP DEPARTMENT
 226 MIDDLE AVE. ELYRIA, OHIO

SURVEYED BY: R.E. WARNER
 CLOSURE: NA
 MAP PAGE(S): 06-23-030
 APPROVED BY: TJS DATE: 1/15/15
 SCALE: 1" = 200 PRIOR INST.: DV XXXX/XXX