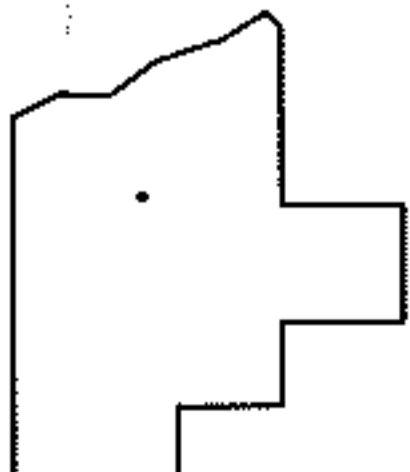
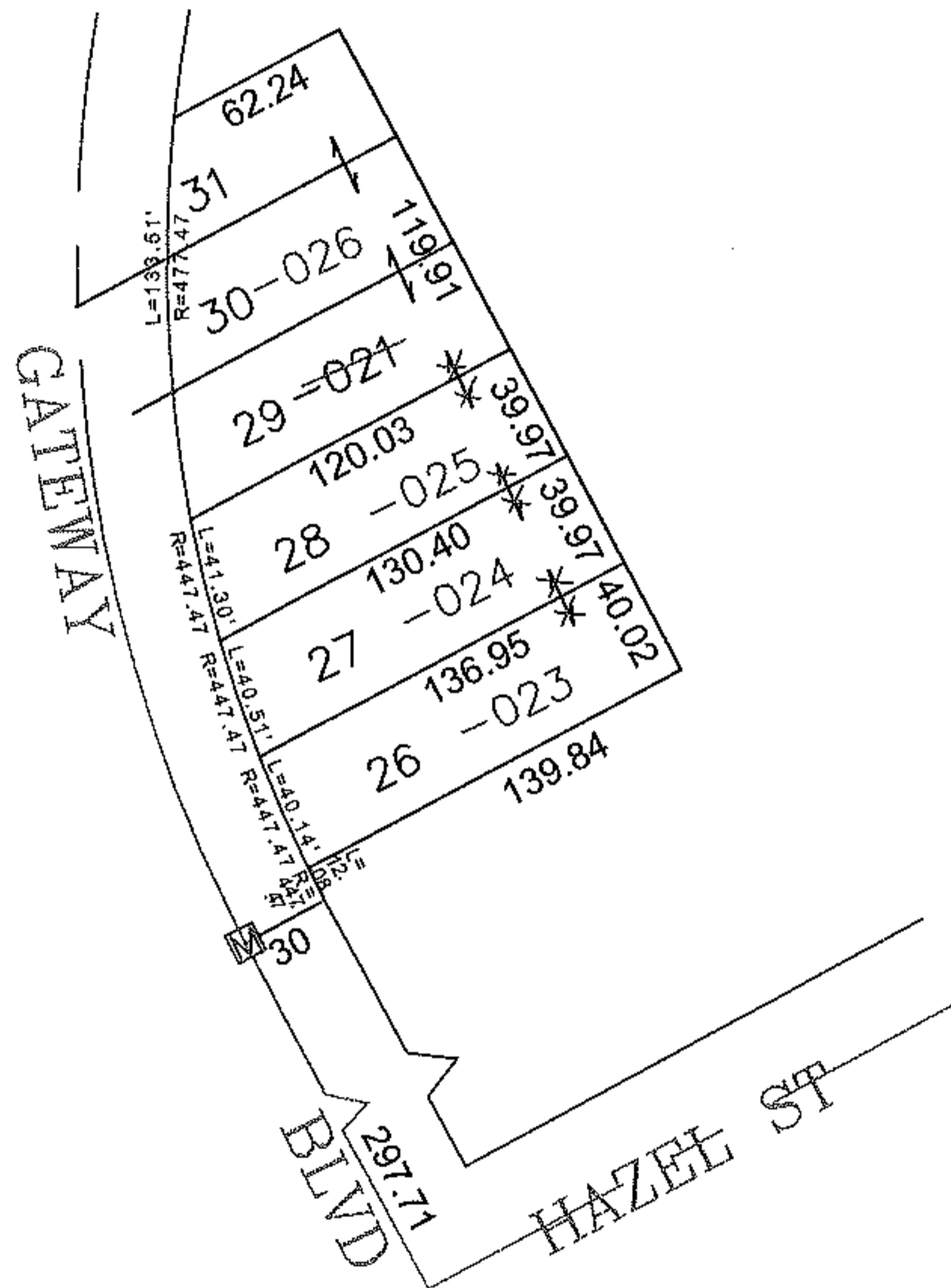
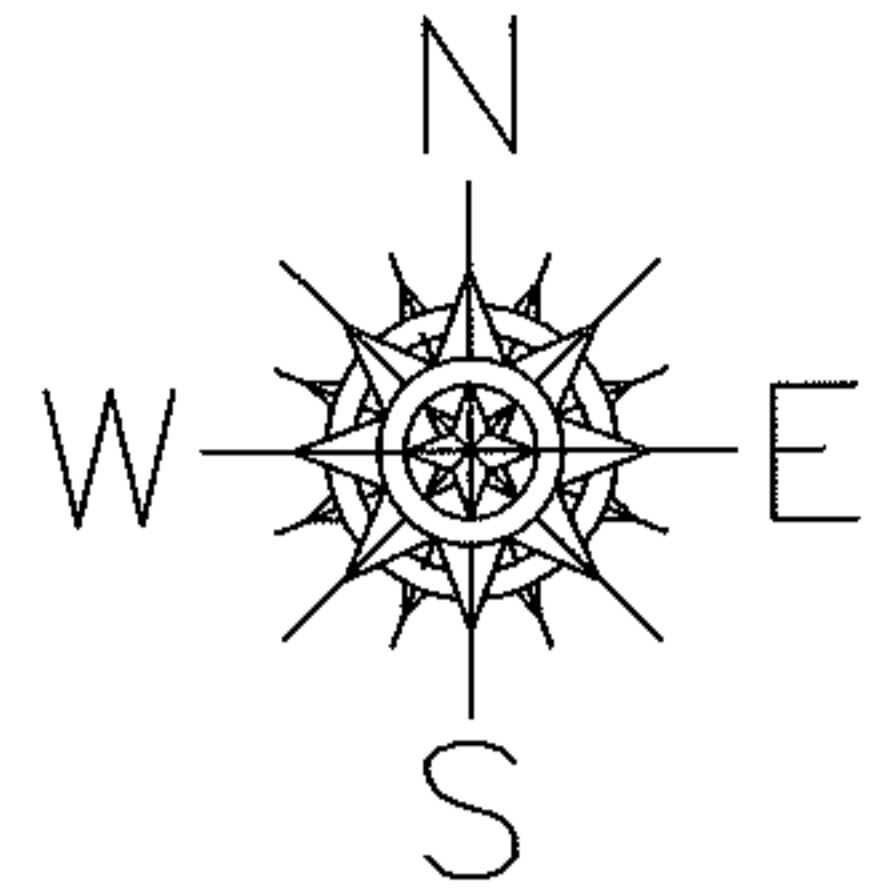


PARENT PARCEL: 06-24-103-000-021

CHILD PARCEL: 06-24-103-000-023, -024, -025, -026

STARTING POINT: CENTERLINE OF HAZEL ST & GATEWAY BLVD

12-03086



SPLITS/DEEDS PROCESSED

LORAIN COUNTY TAX MAP DEPARTMENT
226 MIDDLE AVE. ELYRIA, OHIO

SURVEYED BY: THOMAS SIMON
CLOSURE: 0.00 : 10.000
MAP PAGE(S): 6-117
APPROVED BY: JAH DATE: 10-16-2012
SCALE: 1" = 100 PRIOR INSTRUMENT: 19930224288