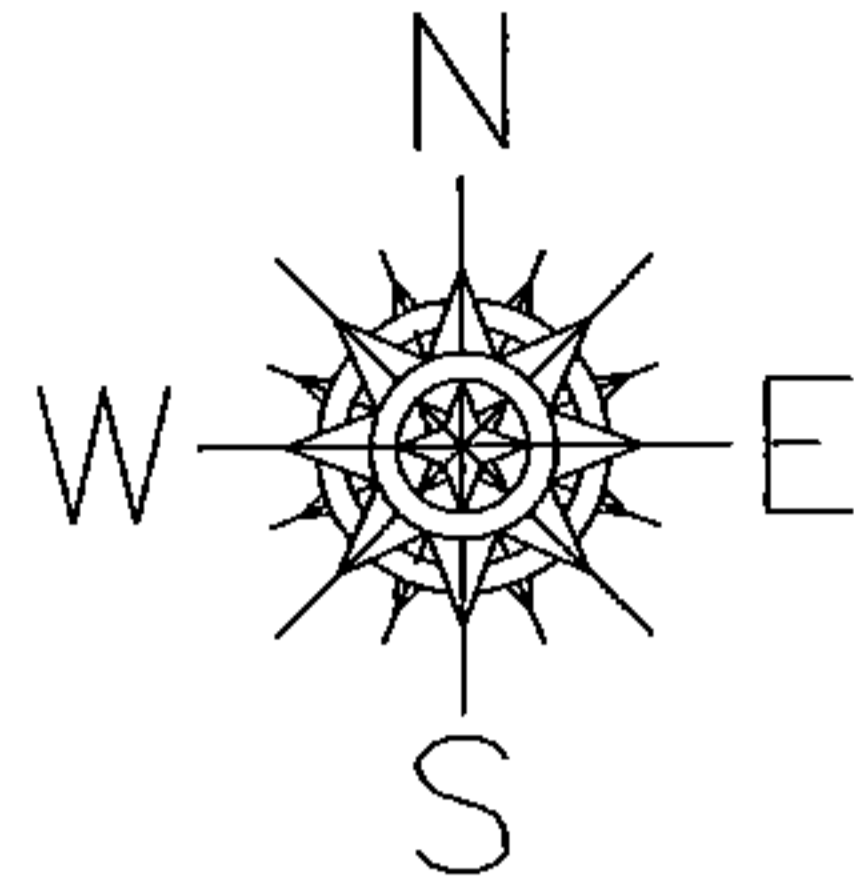


PARENT PARCEL: 14-00-050-000-004 & -007

CHILD PARCEL: XX-XX-XXX-XXX-XXX

STARTING POINT: XXXXXX

14-03081-C

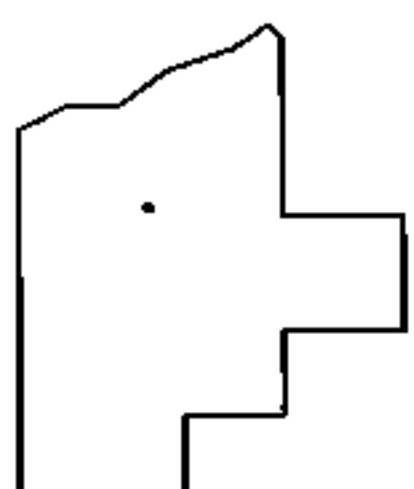
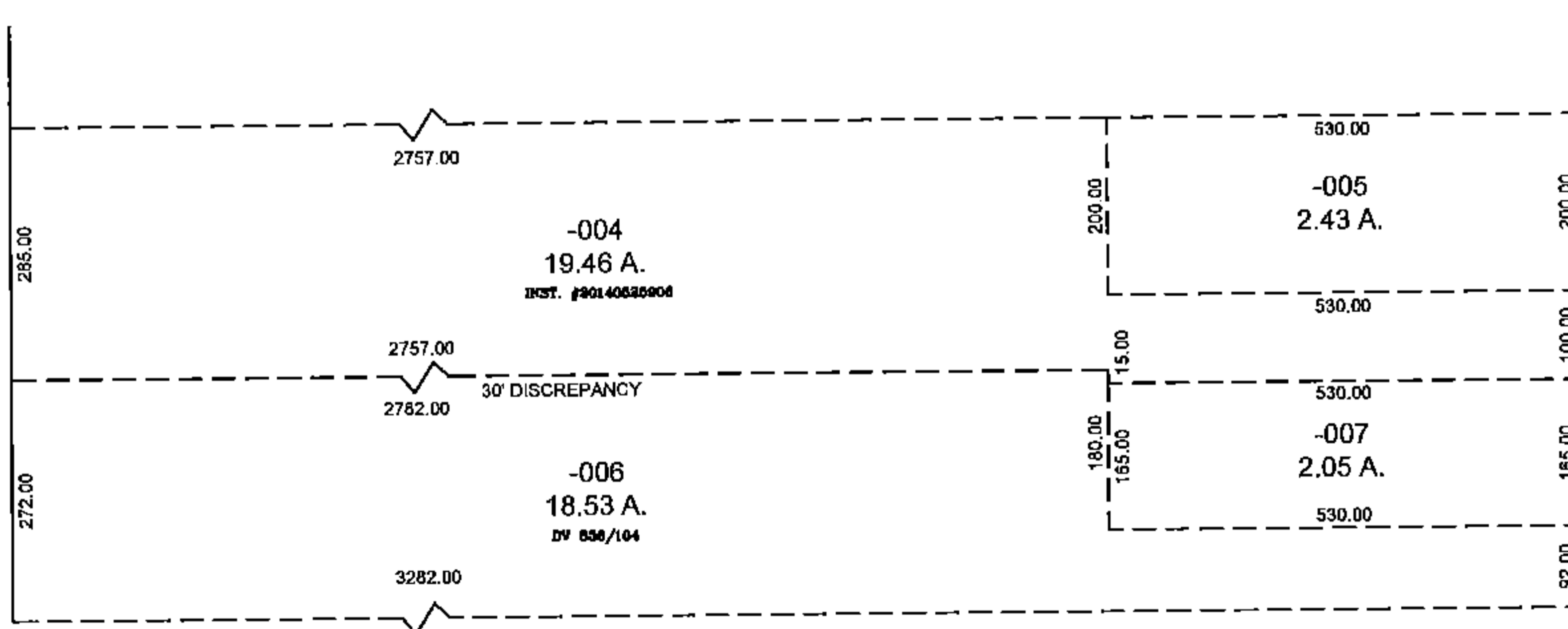


MAP CORRECTION

PER

DV 836/104

INST. # 20140525906



SPLITS/DEEDS PROCESSED
 LORAIN COUNTY TAX MAP DEPARTMENT
 226 MIDDLE AVE. ELYRIA, OHIO

SURVEYED BY: NA
 CLOSURE: NA
 MAP PAGE(S): 14-00-050
 APPROVED BY: TJS DATE: 12/30/14
 SCALE: 1" = 300 PRIOR INSTRUMENT: DV XXXX/XXX