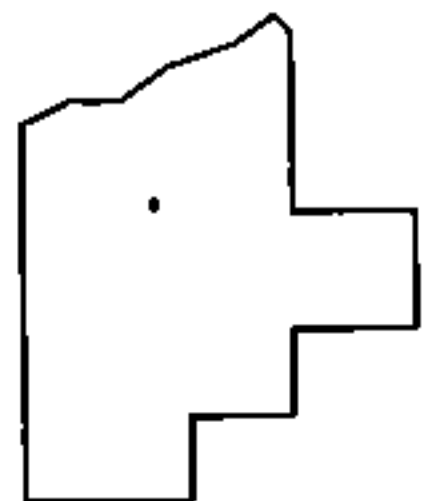
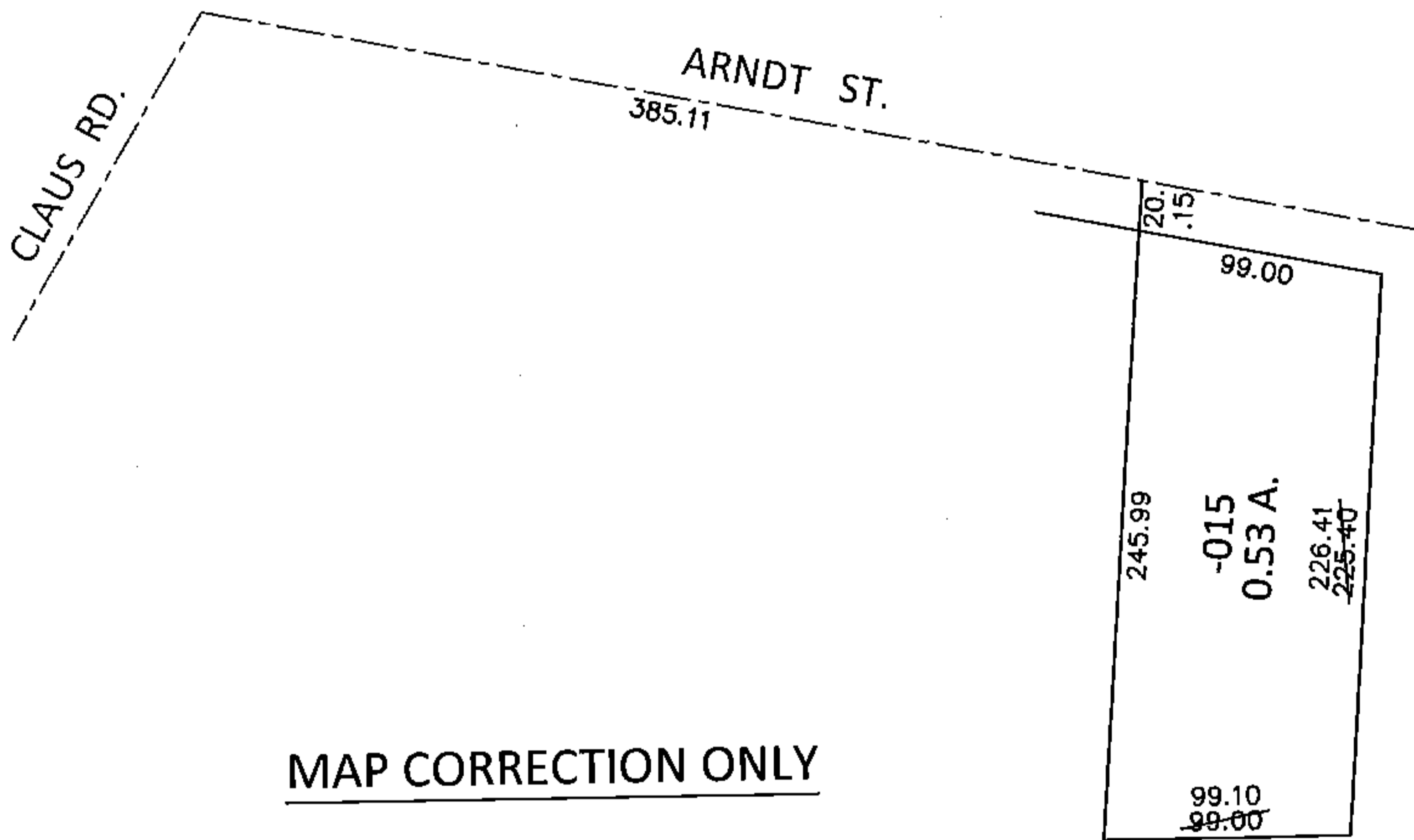
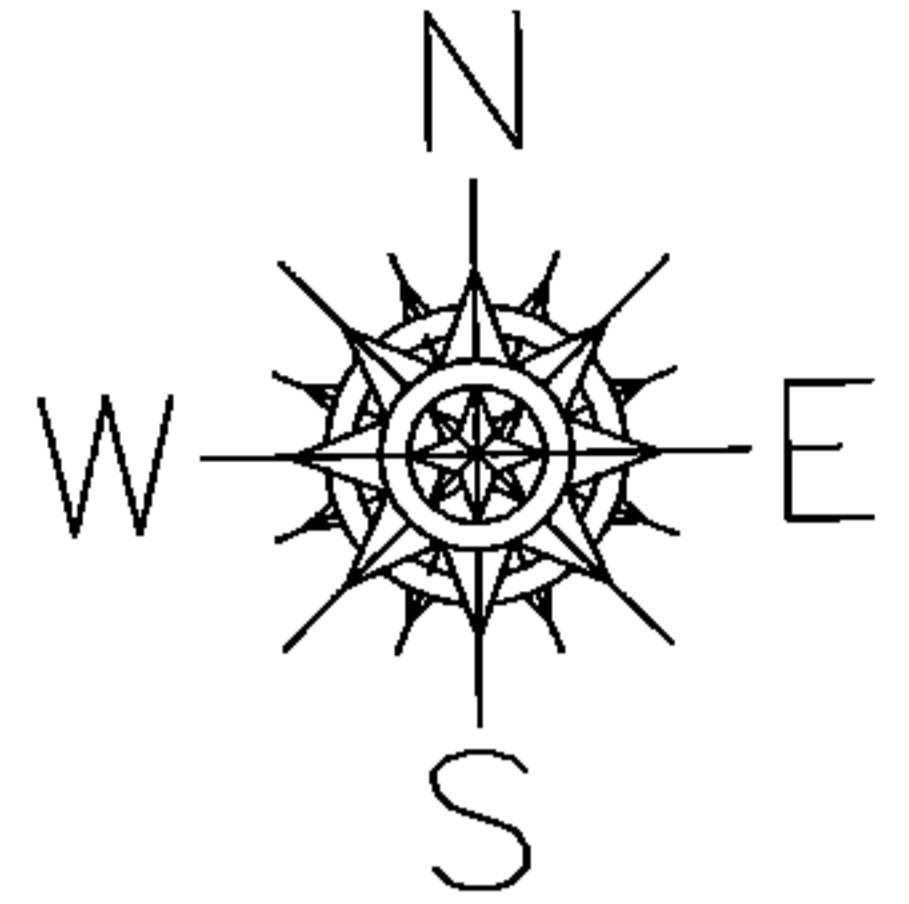


PARENT PARCEL: 01-00-022-104-015

CHILD PARCEL: \_\_\_\_\_

STARTING POINT: INTERSECTION OF C/L OF ARNDT ST. AND C/L OF CLAUS RD.

14-03076-D



SPLITS/DEEDS PROCESSED

LORAIN COUNTY TAX MAP DEPARTMENT  
226 MIDDLE AVE. ELYRIA, OHIO

SURVEYED BY: THOMAS A. SIMON

CLOSURE: .00:10,000

MAP PAGE(S): 1-00-022-A

APPROVED BY: RRM DATE: 12-22-14

SCALE: 1"=100 PRIOR INST.: 20140521117