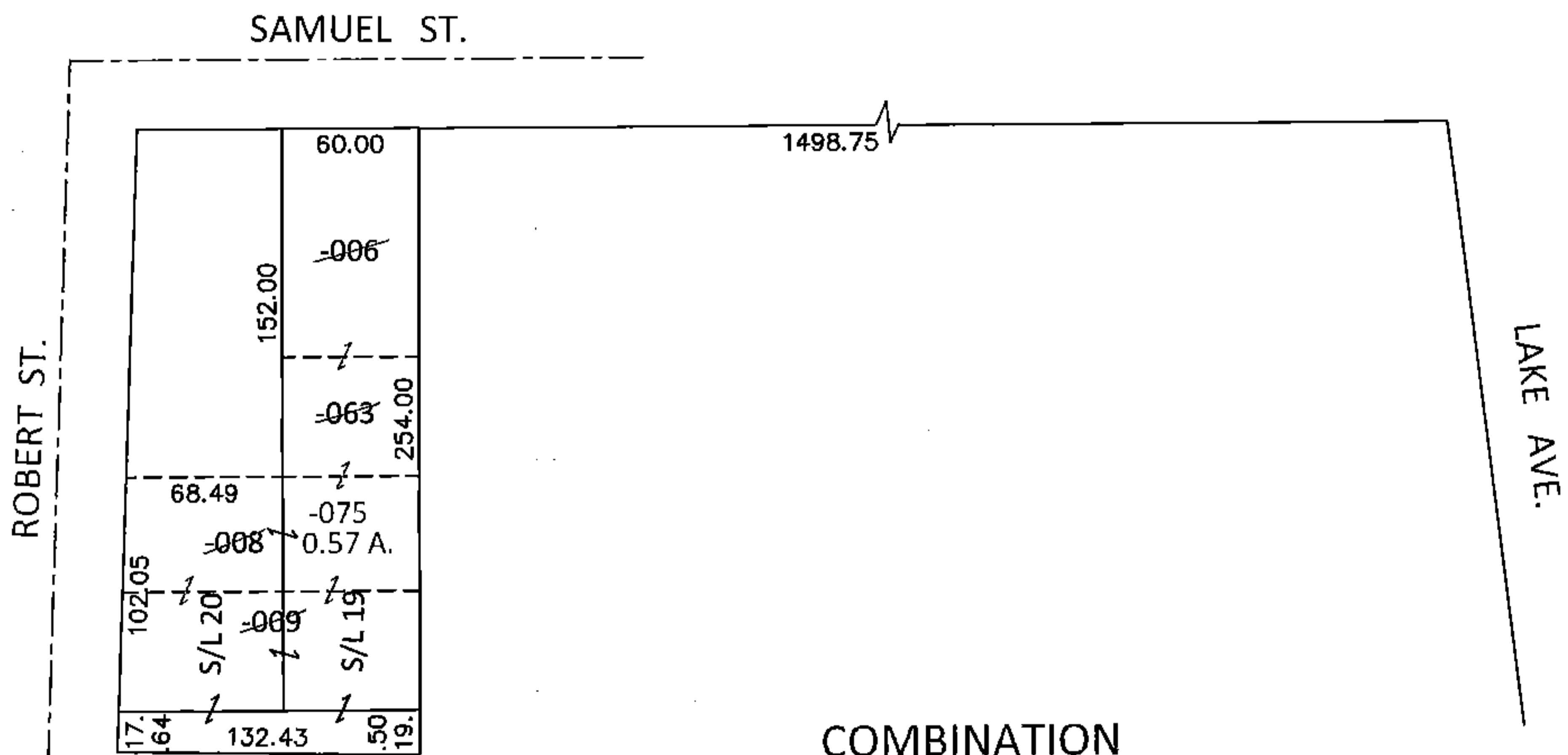
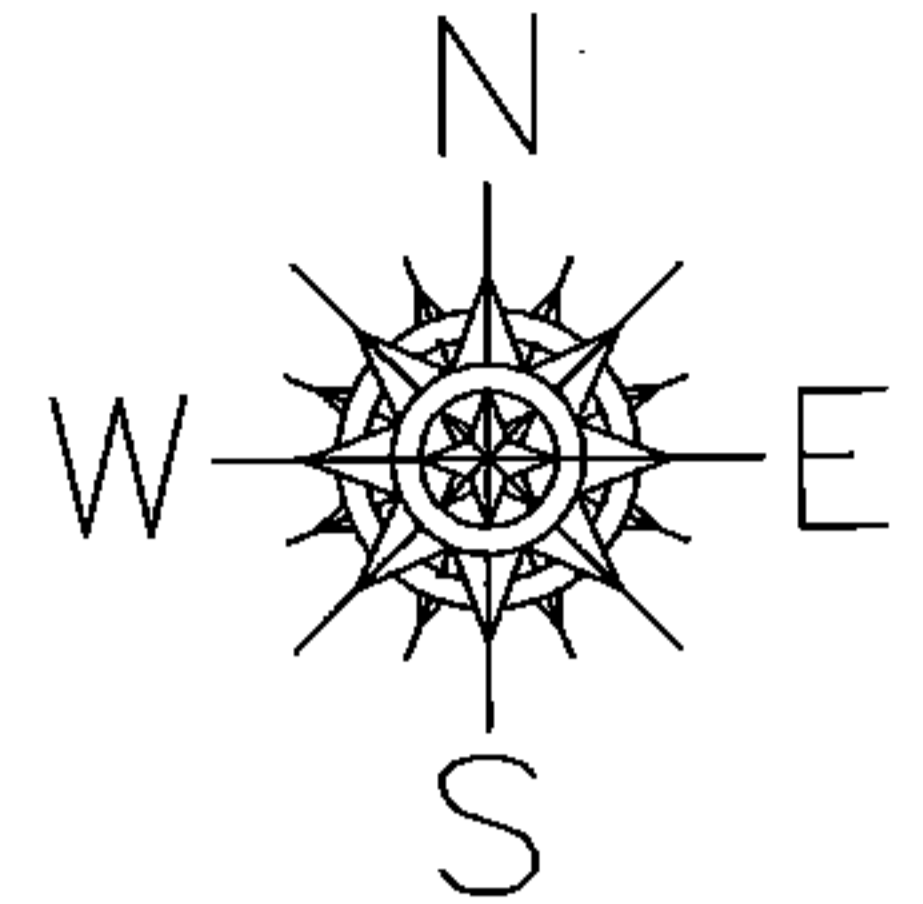


PARENT PARCEL: 06-24-035-102-006, -008, -009, -063

CHILD PARCEL: 06-24-035-102-075

STARTING POINT: INTERSECTION OF SOUTH LINE OF SAMUEL ST. AND WEST LINE OF LAKE AVE.

14-03074-D

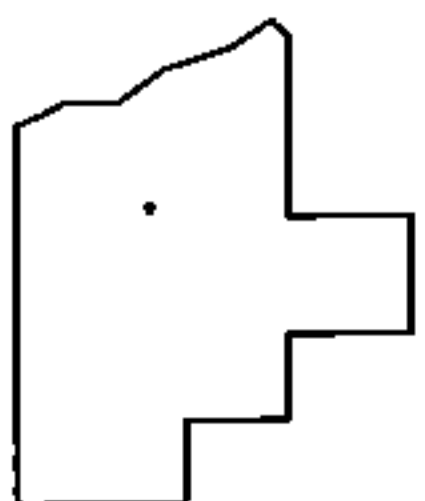


COMBINATION

~~06-24-035-102-006~~ ~~06-24-035-102-008~~
~~60 X 100~~ ~~50.03 X 130~~

~~06-24-035-102-009~~ ~~06-24-035-102-063~~
~~67.67 X 132.43~~ ~~50.02 X 128 IRR~~

06-24-035-102-075
0.57 A.



SPLITS/DEEDS PROCESSED

LORAIN COUNTY TAX MAP DEPARTMENT
226 MIDDLE AVE. ELYRIA, OHIO

SURVEYED BY: N/A

CLOSURE: .01:10,000

MAP PAGE(S): 6-60

APPROVED BY: RRM DATE: 12-19-14

SCALE: 1"= 100 PRIOR INST.: 20130459741