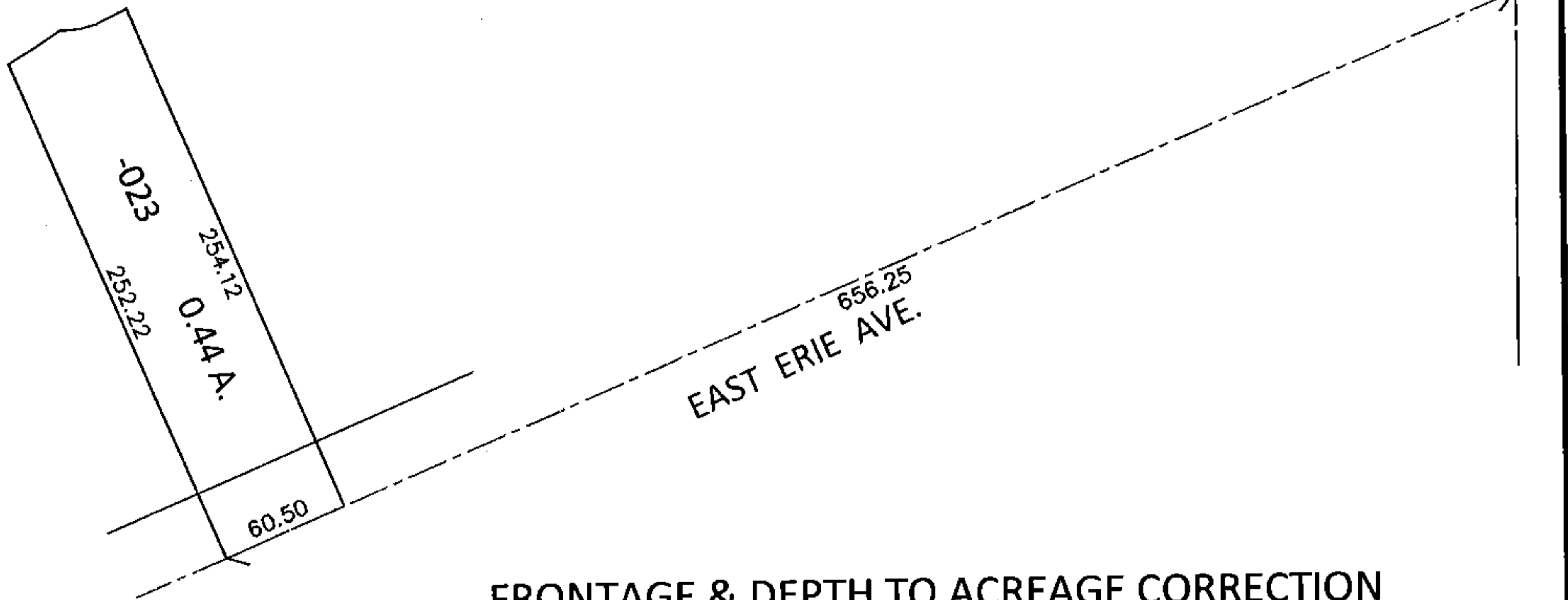
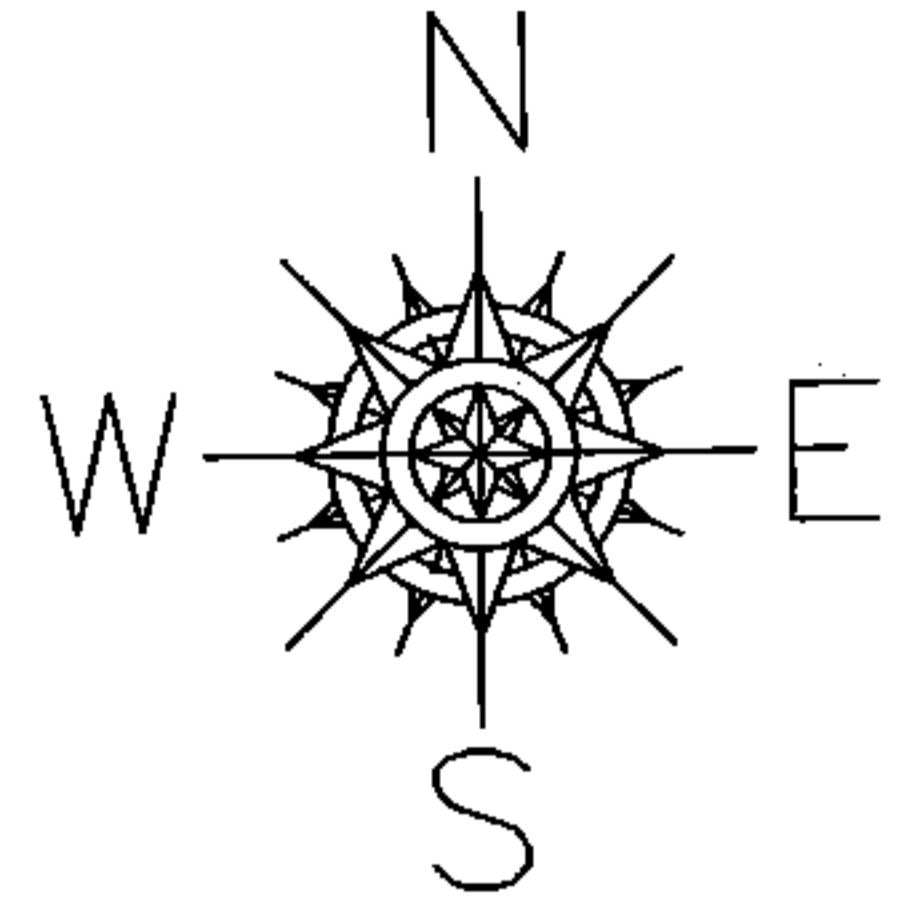


PARENT PARCEL: 02-00-051-101-023

CHILD PARCEL:

STARTING POINT: INTERSECTION OF C/L OF EAST ERIE AVE. AND EAST LINE OF O.L.51

14-03069-D



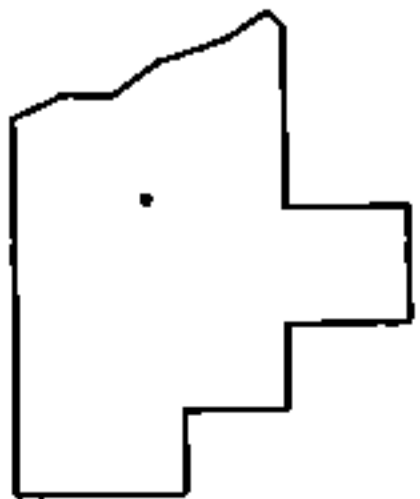
FRONTAGE & DEPTH TO ACREAGE CORRECTION

02-00-051-101-023

0.44 A.

~~60.50 X?~~

PER SURVEY BY PATRICK MCGANNON



SPLITS/DEEDS PROCESSED

LORAIN COUNTY TAX MAP DEPARTMENT
226 MIDDLE AVE. ELYRIA, OHIO

SURVEYED BY: PATRICK A. MCGANNON

CLOSURE: .01:10,000

MAP PAGE(S): 2-00-051-A

APPROVED BY: RRM DATE: 1-5-15

SCALE: 1"= 100 PRIOR INST.: 20120433893