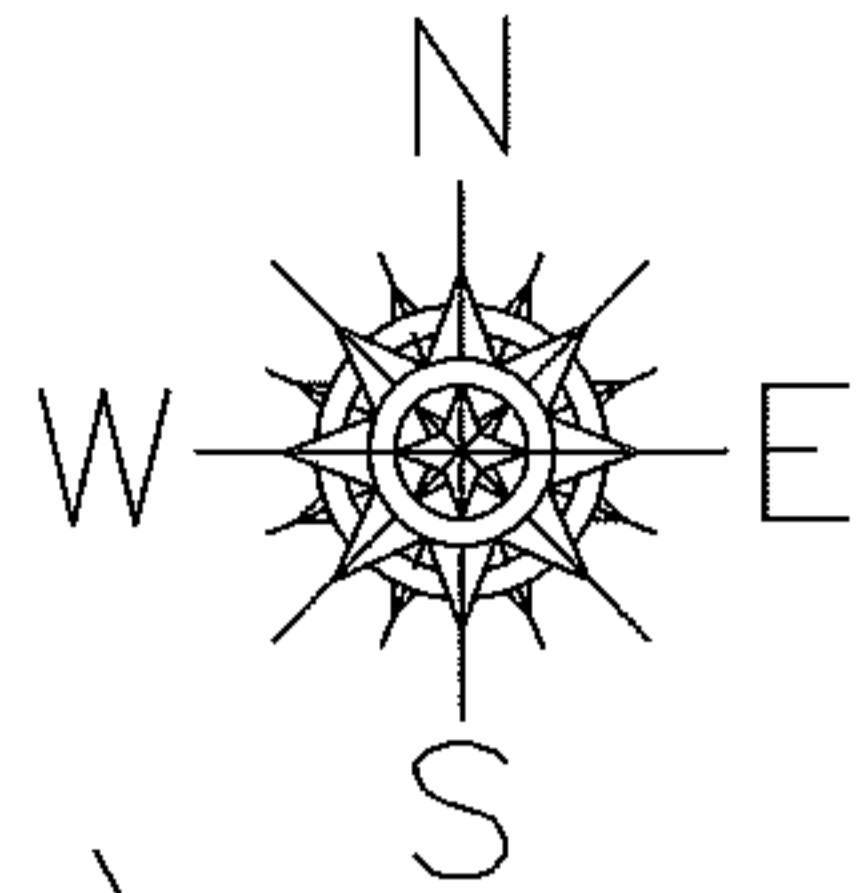


PARENT PARCEL: 07-00-042-115-107

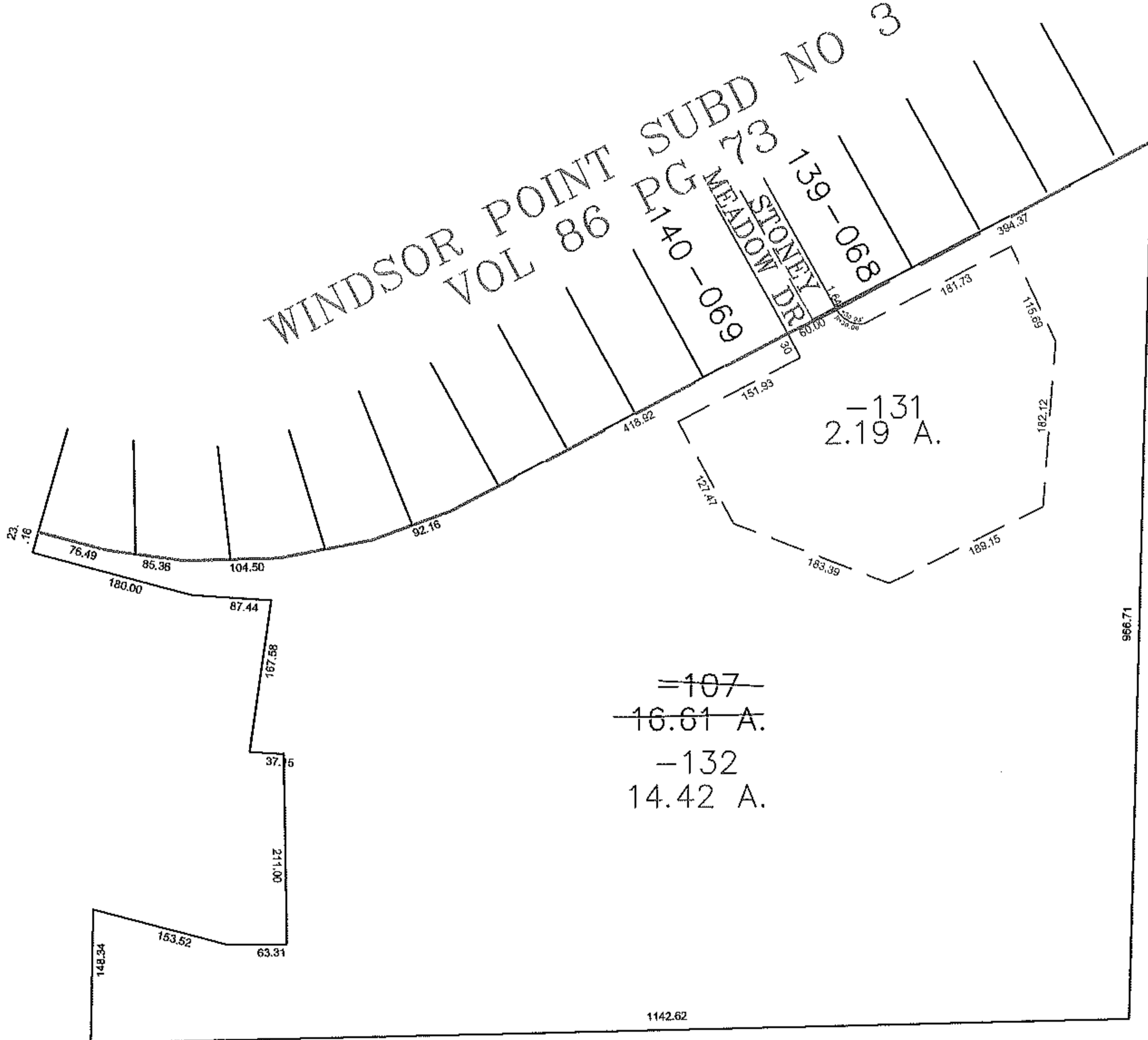
CHILD PARCEL: 07-00-042-115-131, -132

STARTING POINT: SOUTHWESTERLY CORNER OF S/L 139 IN WINDSOR POINT SUBD NO 3

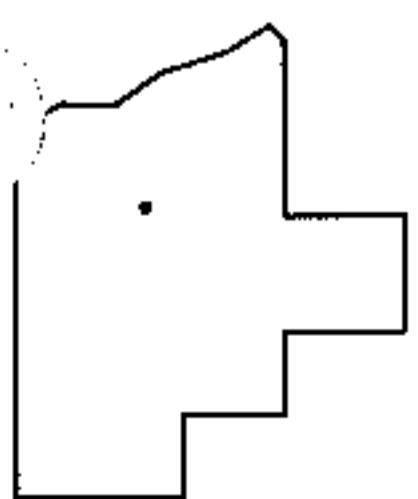
12-03066



WINDSOR POINT SUBD NO 3
VOL 86 PG 73
MEADOW DR 140-069
STONEY 139-068



~~=107~~
~~16.61 A.~~
-132
14.42 A.



SPLITS/DEEDS PROCESSED
LORAIN COUNTY TAX MAP DEPARTMENT
226 MIDDLE AVE. ELYRIA, OHIO

SURVEYED BY: ANTHONY MAIONE
CLOSURE: 0.00 : 10,000
MAP PAGE(S): 7-A
APPROVED BY: JAH DATE: 8/31/2012
SCALE: 1" = 200 PRIOR INSTRUMENT: DV XXXX/XXX