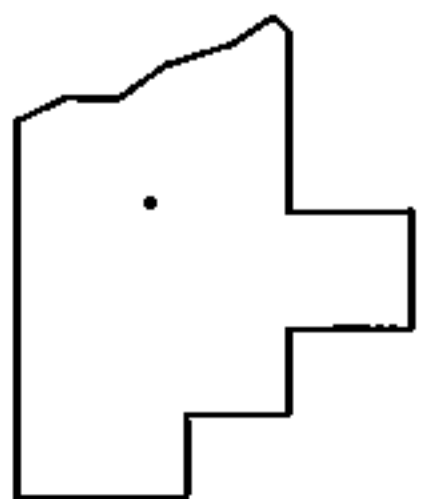
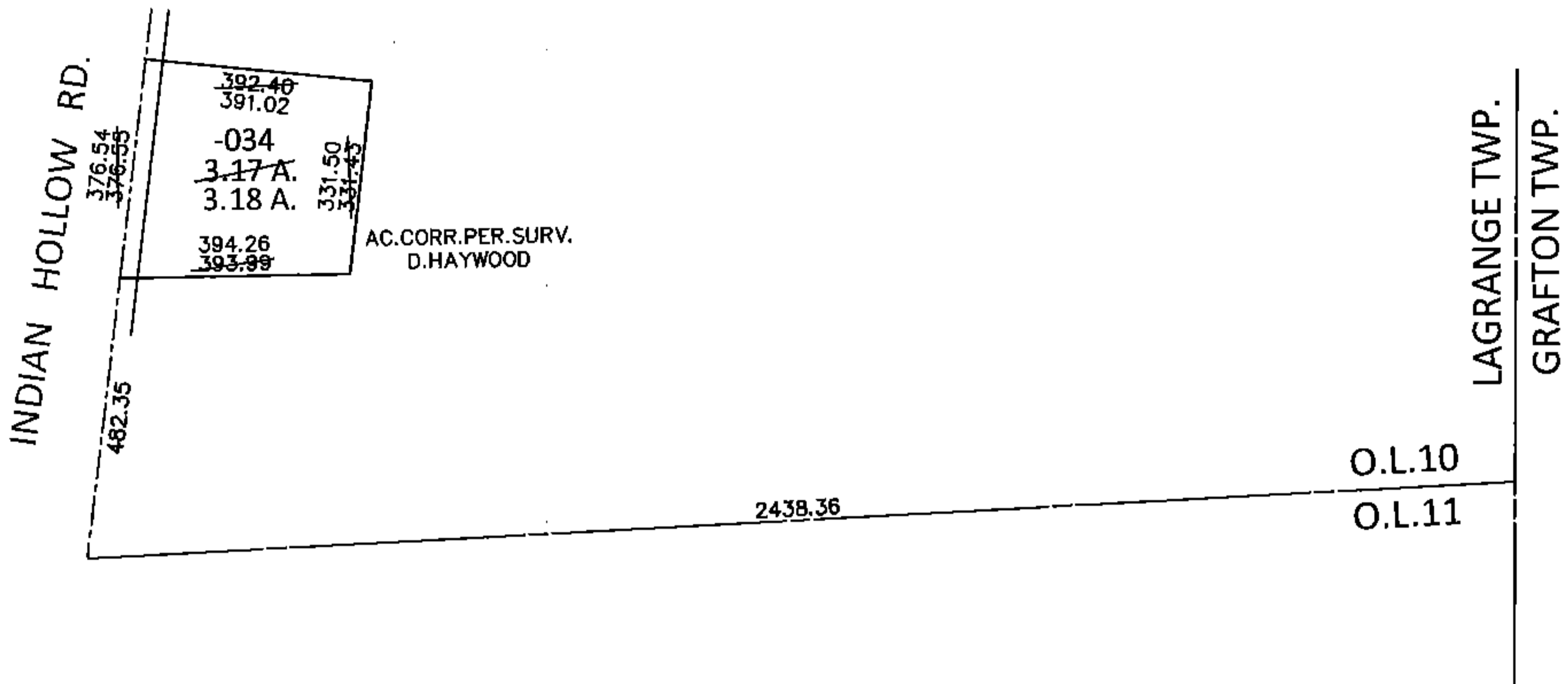
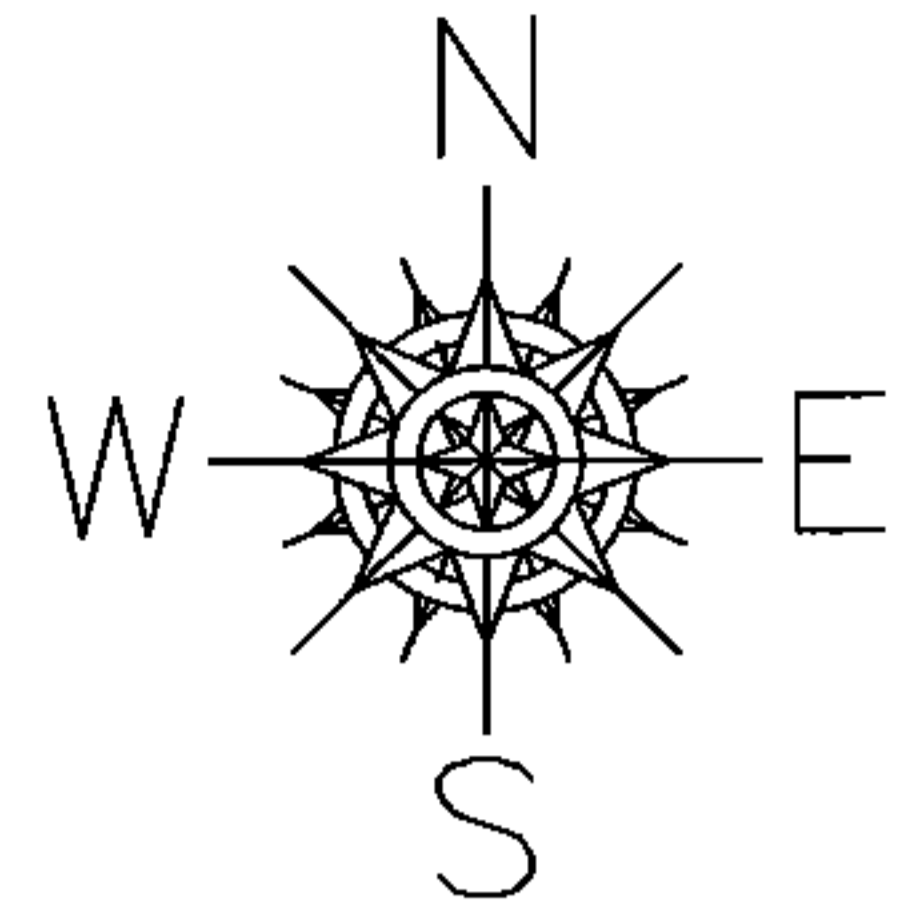


PARENT PARCEL: 15-00-010-000-034

CHILD PARCEL: _____

STARTING POINT: SOUTHEAST CORNER OF O.L.10

14-03064-D



SPLITS/DEEDS PROCESSED

LORAIN COUNTY TAX MAP DEPARTMENT
226 MIDDLE AVE. ELYRIA, OHIO

SURVEYED BY: DALE R. HAYWOOD

CLOSURE: .01:10,000

MAP PAGE(S): 15-D

APPROVED BY: RRM DATE: 11-25-14

SCALE: 1"= 400 PRIOR INST.: 20130458761