

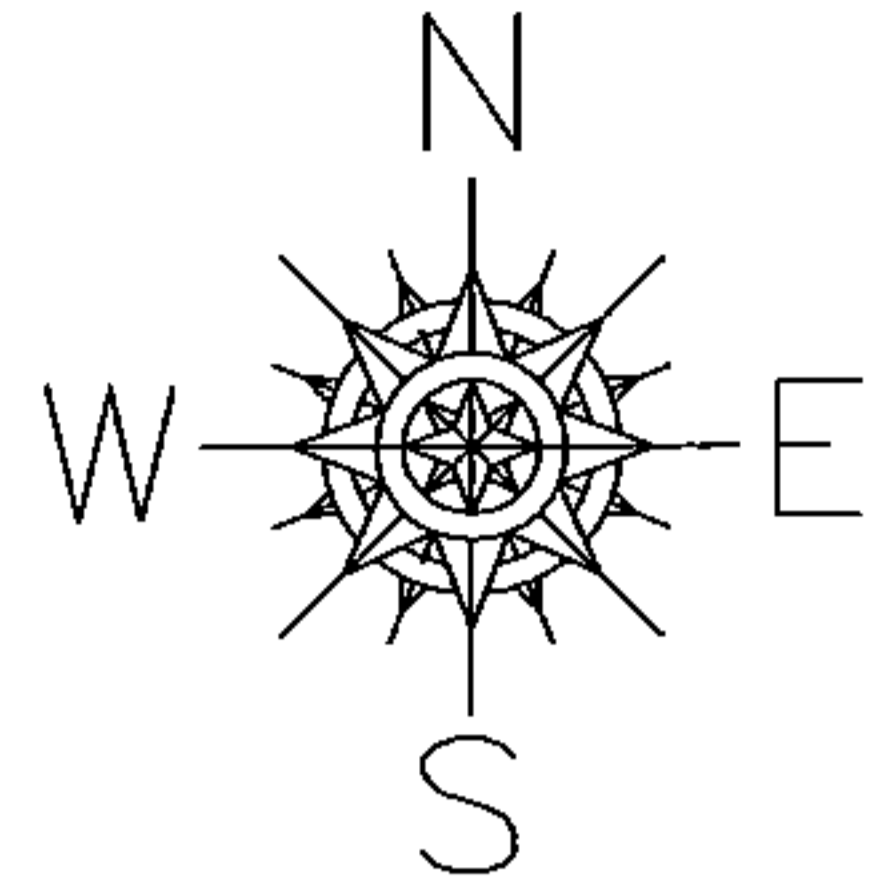
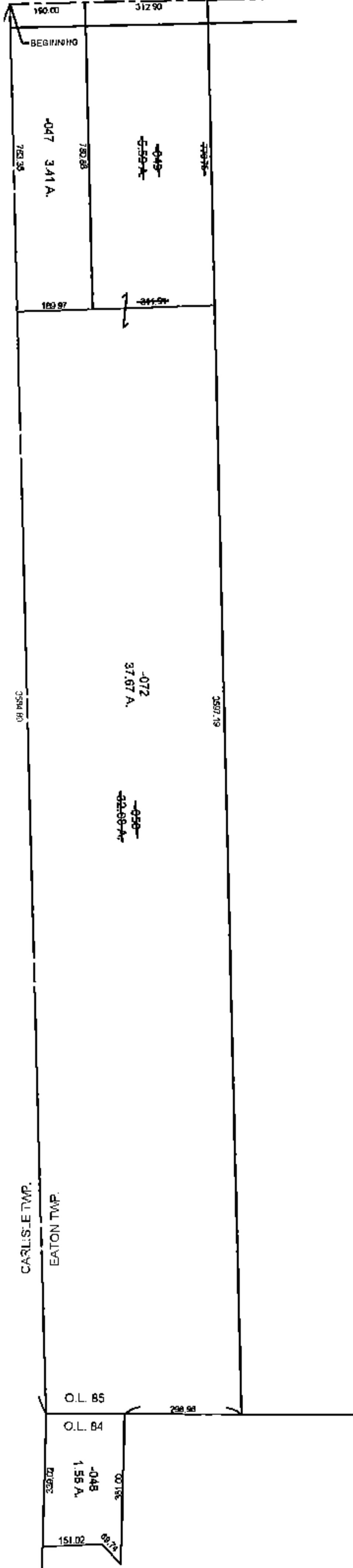
PARENT PARCEL: 11-00-085-000-049 & -050

CHILD PARCEL: 11-00-085-000-072

STARTING POINT: N.W. CORNER OF O.L. 85

14-03058-C

ELYRIA-TWINSBURG RD. (S.R. 82)



COMBINATION

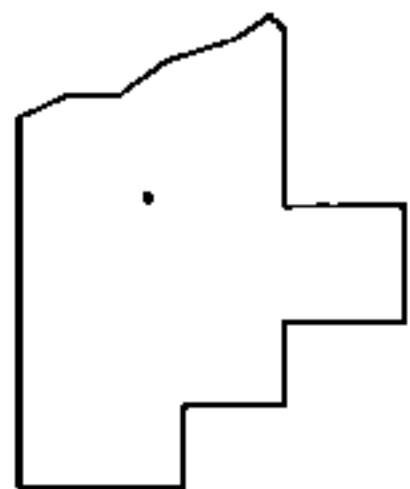
~~11-00-085-000-049~~
~~5.59 A.~~

&

~~11-00-085-000-050~~
~~32.08 A.~~

11-00-085-000-072
37.67 A.

PER INST. # 20020822390



SPLITS/DEEDS PROCESSED

LORAIN COUNTY TAX MAP DEPARTMENT
226 MIDDLE AVE. ELYRIA, OHIO

SURVEYED BY: J. W. WARDEN

CLOSURE: 1 : 9000

MAP PAGE(S): 11-00-085

APPROVED BY: TJS DATE: 11/12/14

SCALE: 1" = 500 PRIOR INSTRUMENT: 20020811297