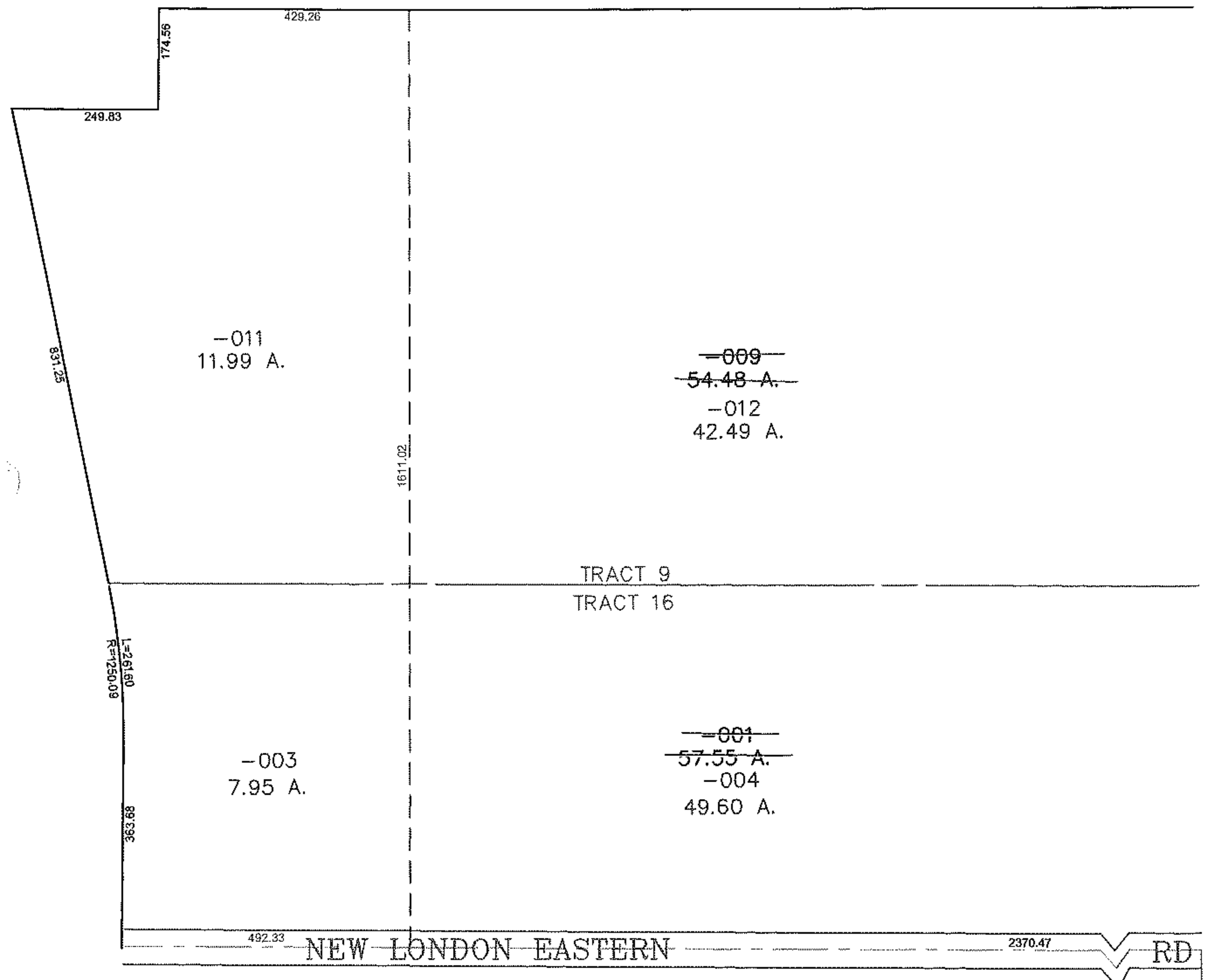
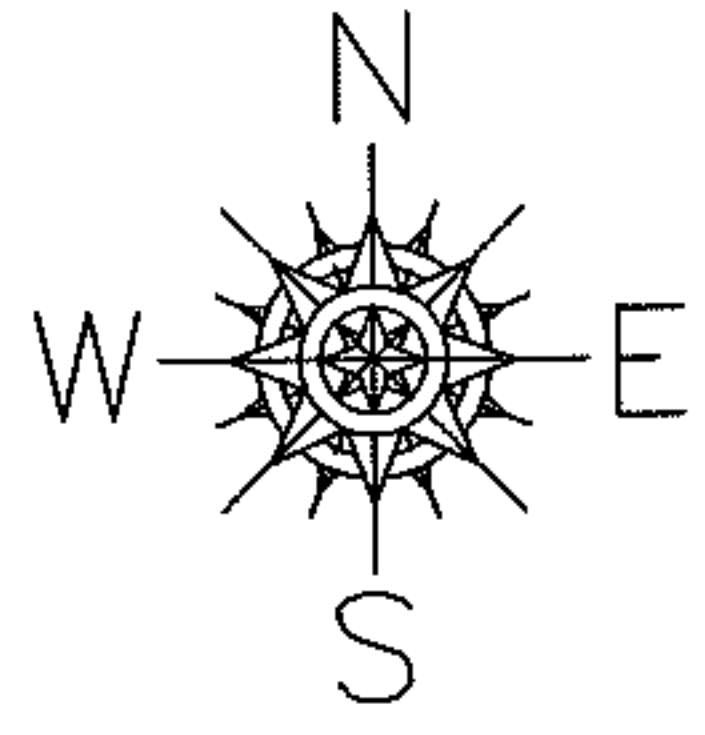


PARENT PARCEL: 21-16-000-000-001, 21-09-000-000-009

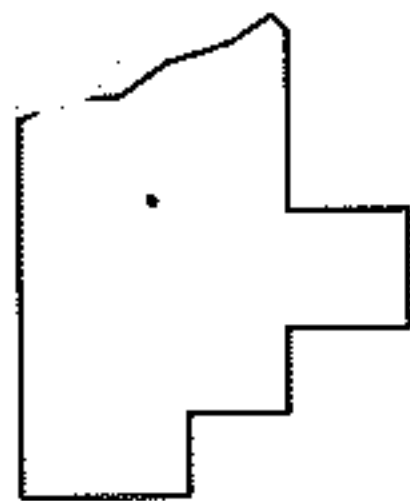
CHILD PARCEL: 21-16-000-000-003, -004 21-09-000-000-011, -012

STARTING POINT: CENTERLINE OF NEW LONDON EASTERN RD & O.L. 1 TR 8

12-03055



TR 8 O.L. 1  
TR 8 O.L. 2



**SPLITS/DEEDS PROCESSED**  
LORAIN COUNTY TAX MAP DEPARTMENT  
226 MIDDLE AVE. ELYRIA, OHIO

SURVEYED BY: RONALD LAUGHERY  
CLOSURE: 0.00 : 10.000  
MAP PAGE(S): 21-G  
APPROVED BY: JAH DATE: 8-13-2012  
SCALE: 1" = 300 PRIOR INSTRUMENT: 20120411541