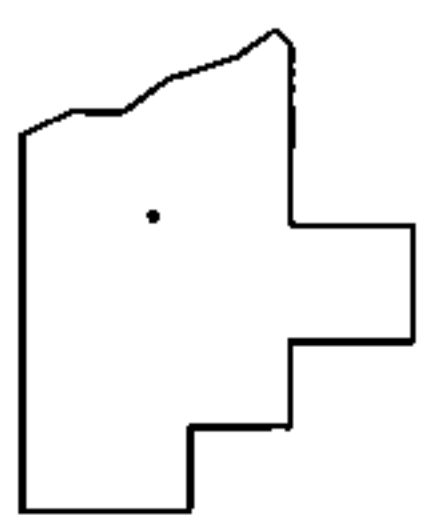
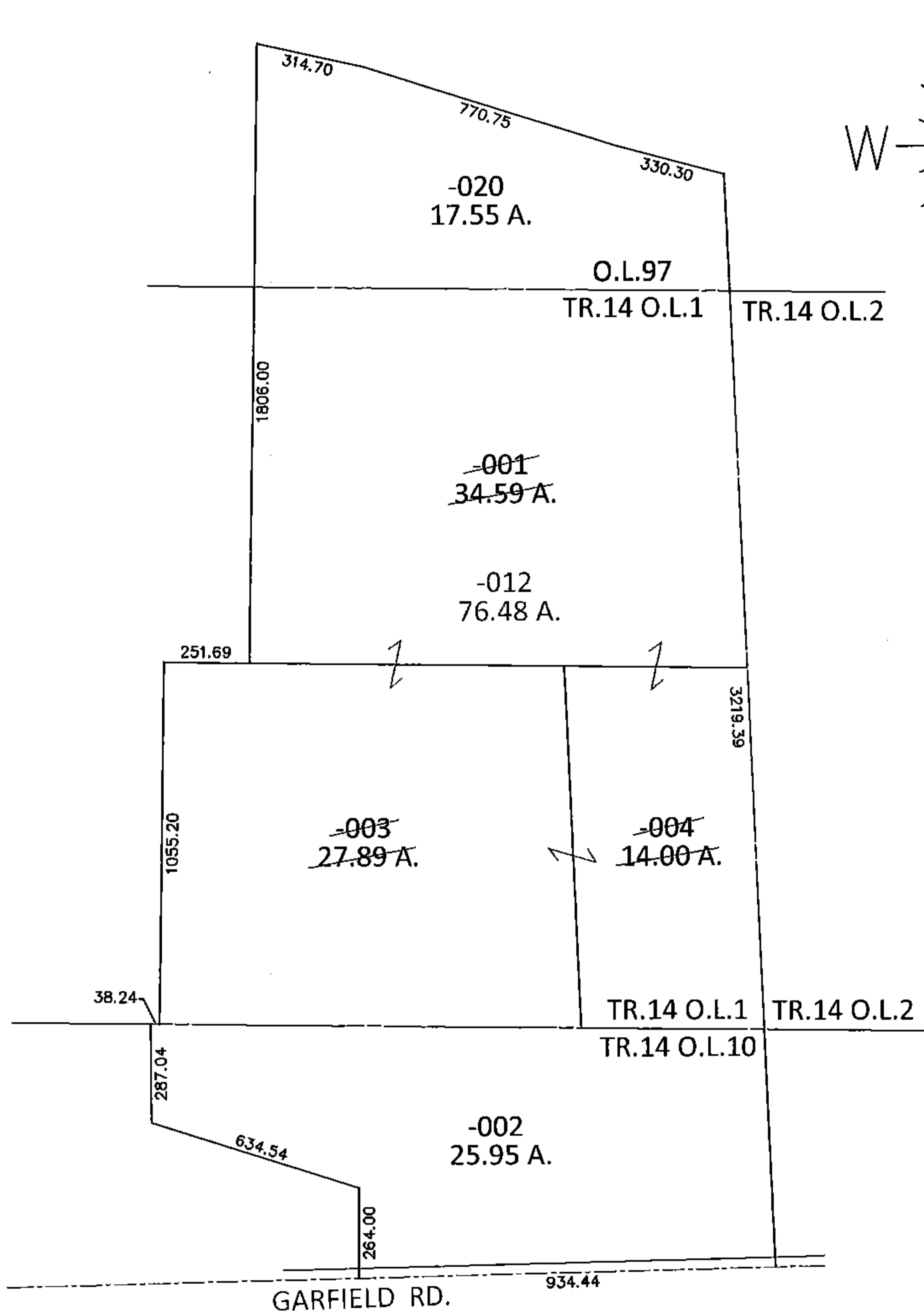


PARENT PARCEL: 08-00-097-000-020, 08-14-001-000-001, -003, -004, 08-14-010-000-002

CHILD PARCEL: 08-00-097-000-020, 08-14-001-000-012, 08-14-010-000-002

STARTING POINT: SOUTHEAST CORNER OF CECIL M. & MARGARET ADKINS (DV 917/467)

14-03052-C



**SPLITS/DEEDS PROCESSED**

LORAIN COUNTY TAX MAP DEPARTMENT  
226 MIDDLE AVE. ELYRIA, OHIO

SURVEYED BY: N/A

CLOSURE: N/A

MAP PAGE(S): 8-A

APPROVED BY: RRM DATE: 10-28-14

SCALE: 1"= 500 PRIOR INST.: 20110375870