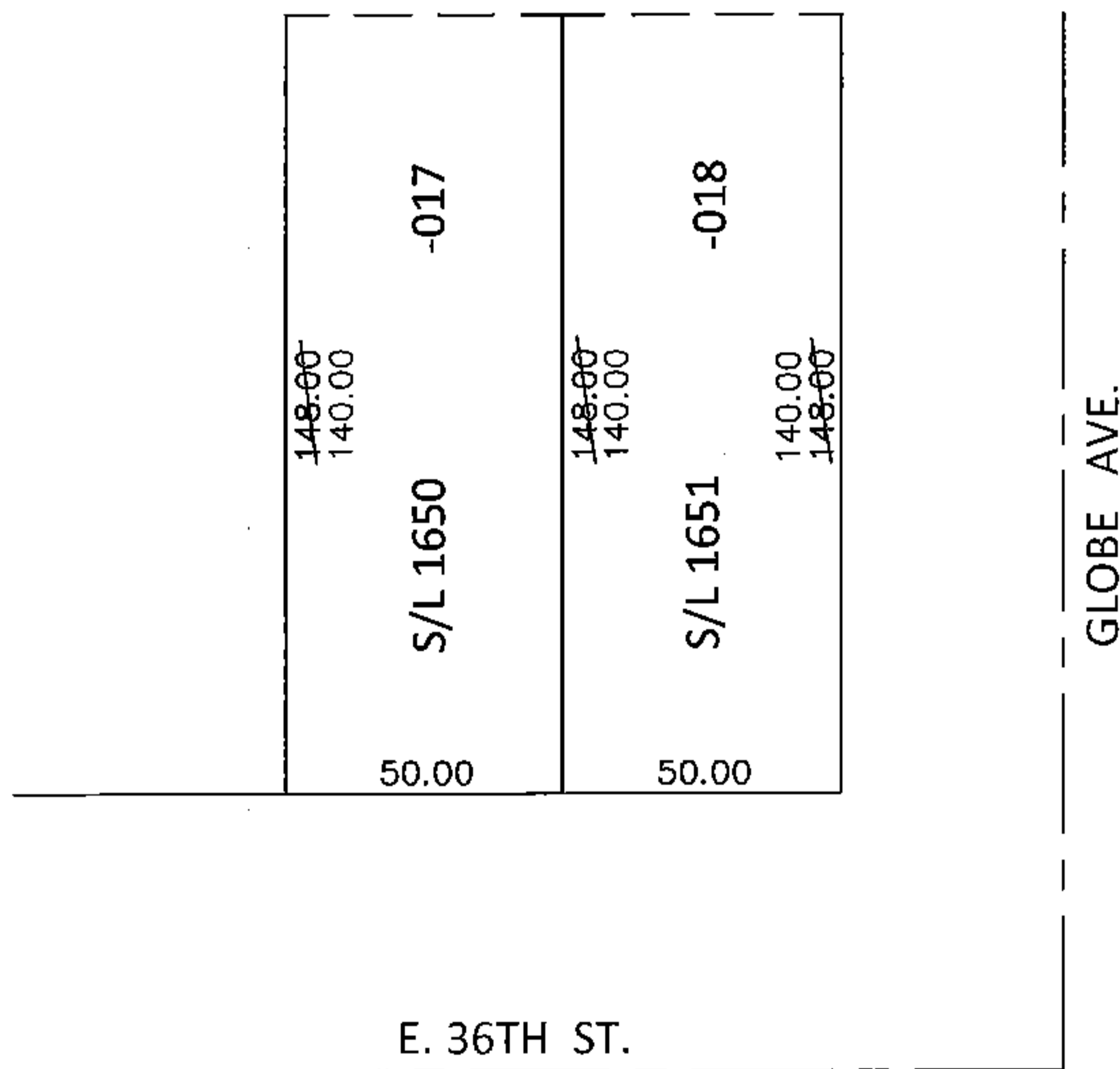
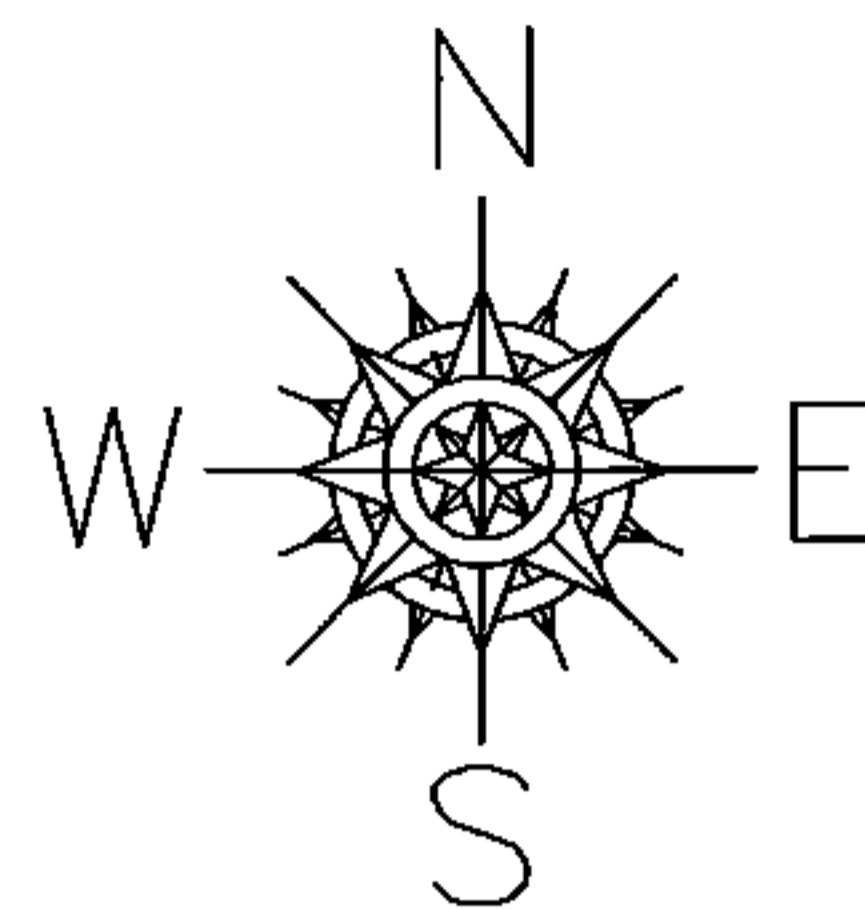


PARENT PARCEL: 03-00-101-101-017, -018
CHILD PARCEL: _____
STARTING POINT: PART OF S/L'S 1650 AND 1651 IN SHEFFIELD LAND COMPANY'S ADD.SUB. NO.2 (VOL.4 PG.32)

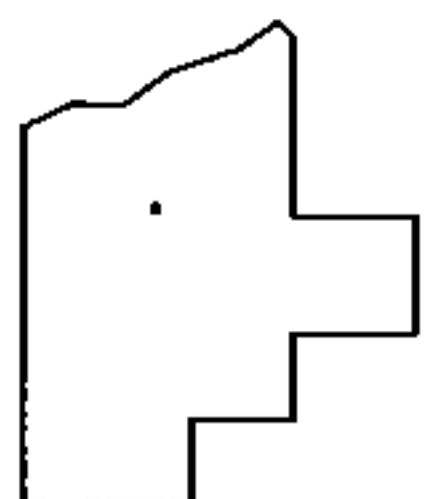
14-03050-C



DEPTH CORRECTION

03-00-101-101-017	03-00-101-101-018
140	140
50 X 148	50 X 148

PER PRIOR DEEDS



SPLITS/DEEDS PROCESSED
LORAIN COUNTY TAX MAP DEPARTMENT
226 MIDDLE AVE. ELYRIA, OHIO

SURVEYED BY: N/A
CLOSURE: N/A
MAP PAGE(S): 3-00-101-A
APPROVED BY: RRM DATE: 10-28-14
SCALE: 1"=50' PRIOR INST.: 20140523638