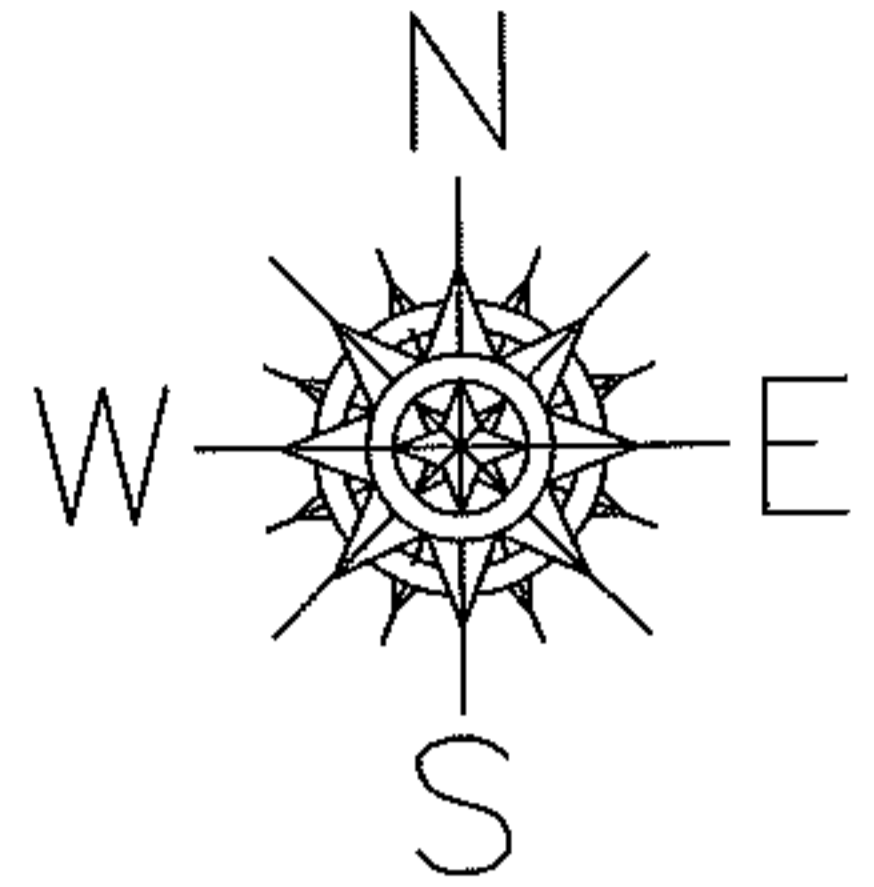


PARENT PARCEL: 04-00-006-101-077, -078

CHILD PARCEL: 04-00-006-101-086

STARTING POINT: CENTERLINE OF LAKE RD & AVON LAKE CORP LINE

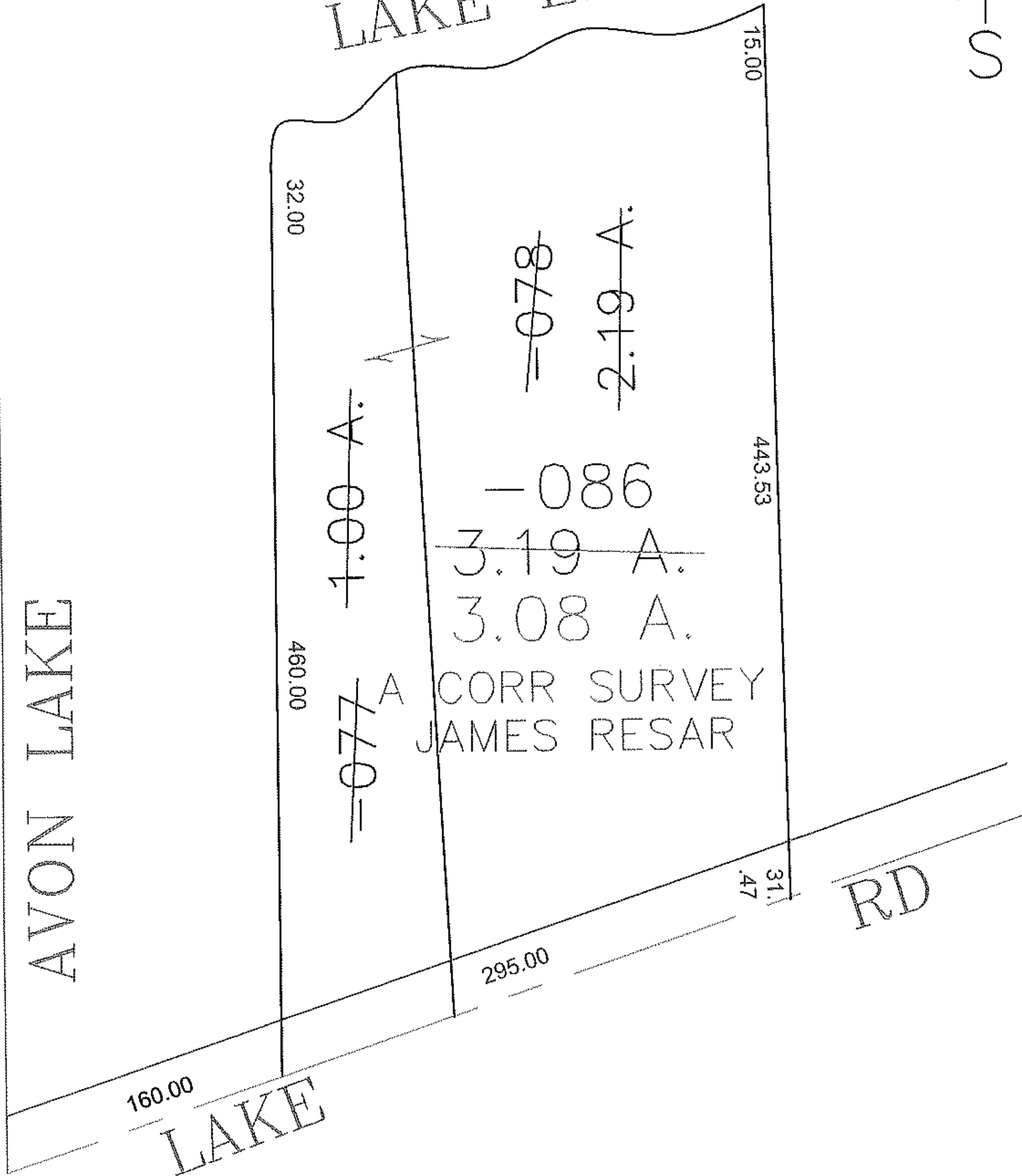
12-03047



SHEFFIELD LAKE

AVON LAKE

LAKE ERIE



SPLITS/DEEDS PROCESSED

LORAIN COUNTY TAX MAP DEPARTMENT
226 MIDDLE AVE. ELYRIA, OHIO

SURVEYED BY: JAMES A RESAR

CLOSURE: 0.00 : 10.000

MAP PAGE(S): 04-00-006-A

APPROVED BY: JAH DATE: 7-19-2012

SCALE: 1" = 100' PRIOR INSTRUMENT: 20040040206