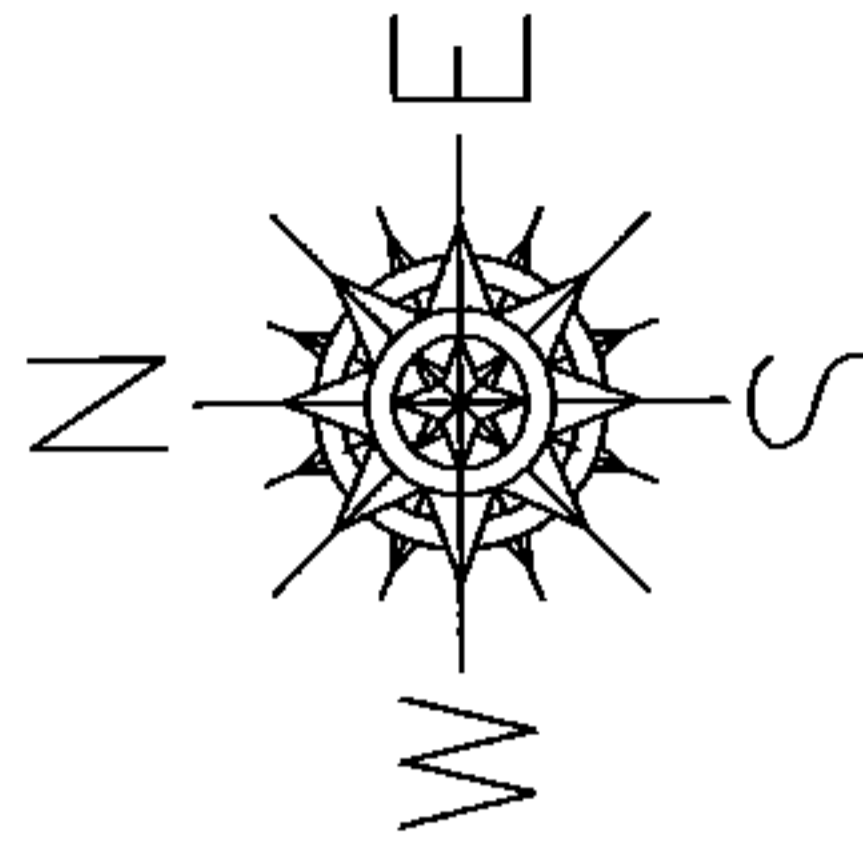


PARENT PARCEL: ADD TO DUPLICATE

CHILD PARCEL: 17-07-010-500-003

STARTING POINT: XXXXXX

14-03045-C

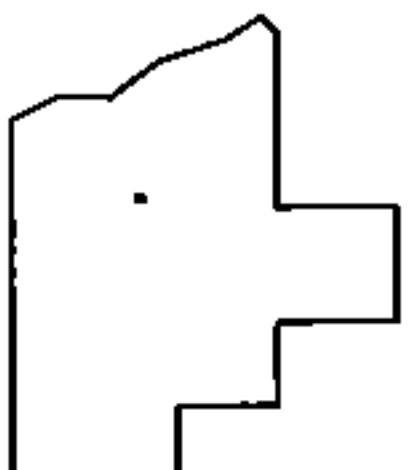
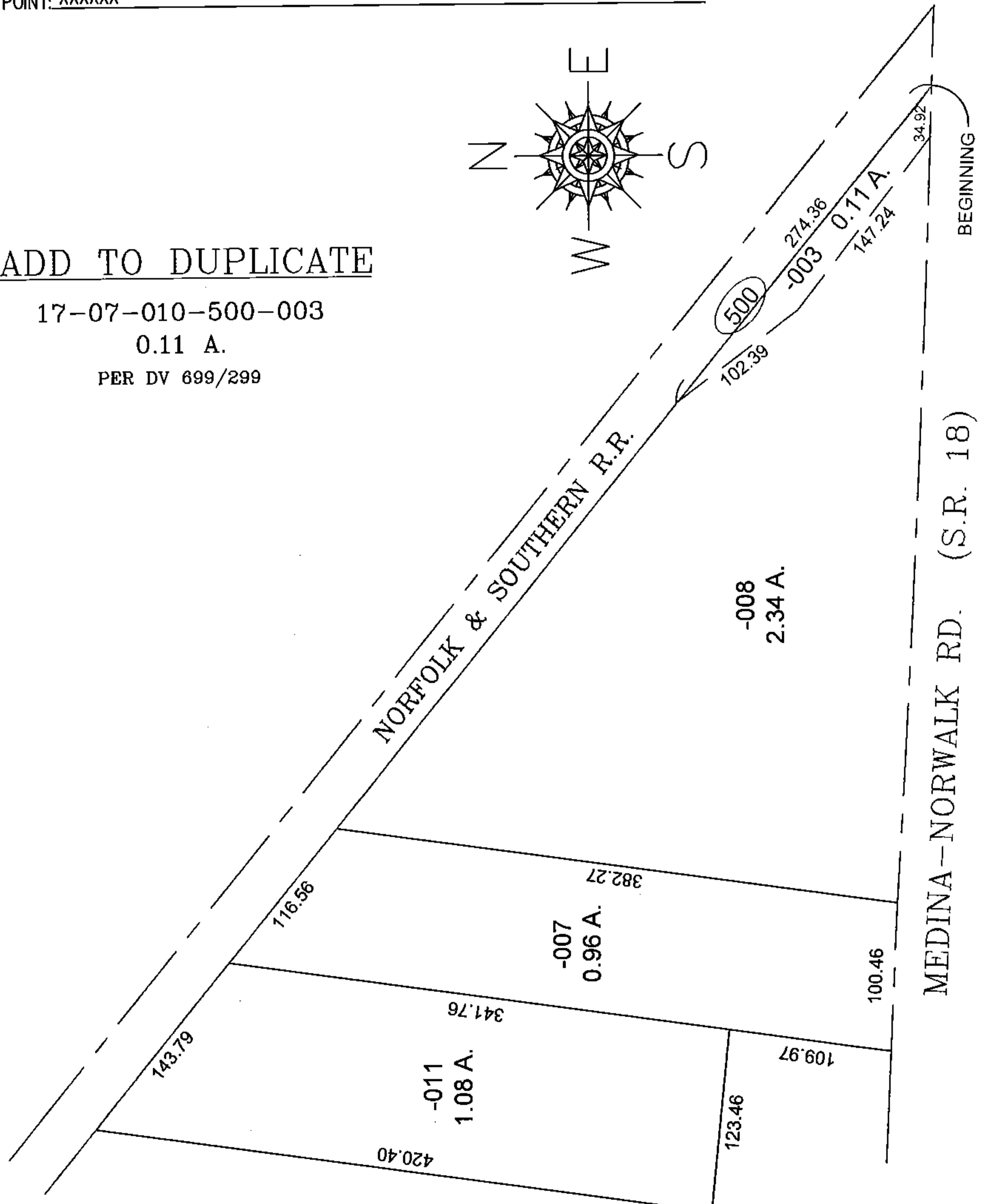


ADD TO DUPLICATE

17-07-010-500-003

0.11 A.

PER DV 699/299



SPLITS/DEEDS PROCESSED

LORAIN COUNTY TAX MAP DEPARTMENT
226 MIDDLE AVE. ELYRIA, OHIO

SURVEYED BY: NA

CLOSURE: 0.01 : 10,000

MAP PAGE(S): 17-07-010

APPROVED BY: TJS DATE: 12/29/14

SCALE: 1" = 100' PRIOR INSTRUMENT: DV 699/299