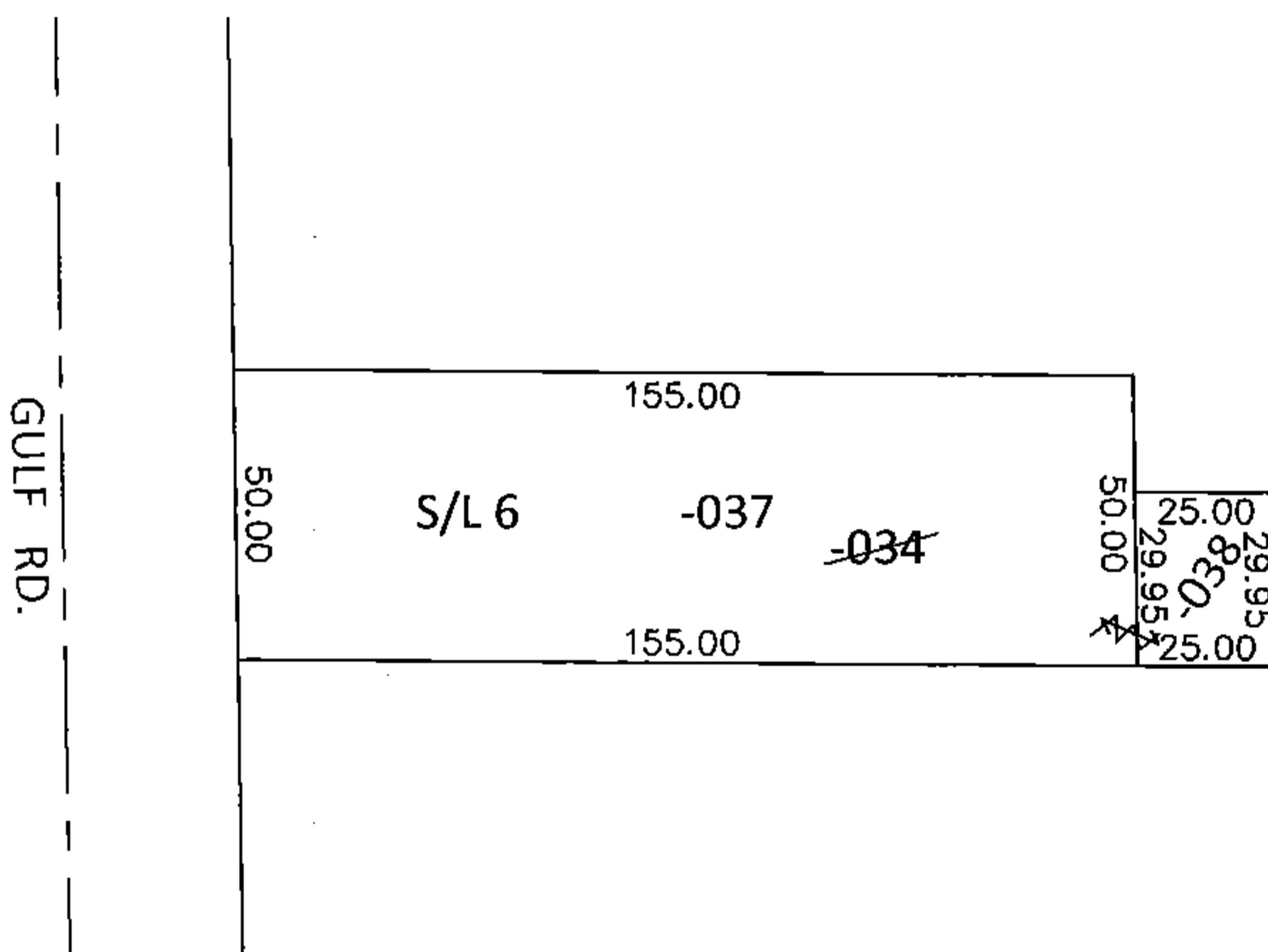
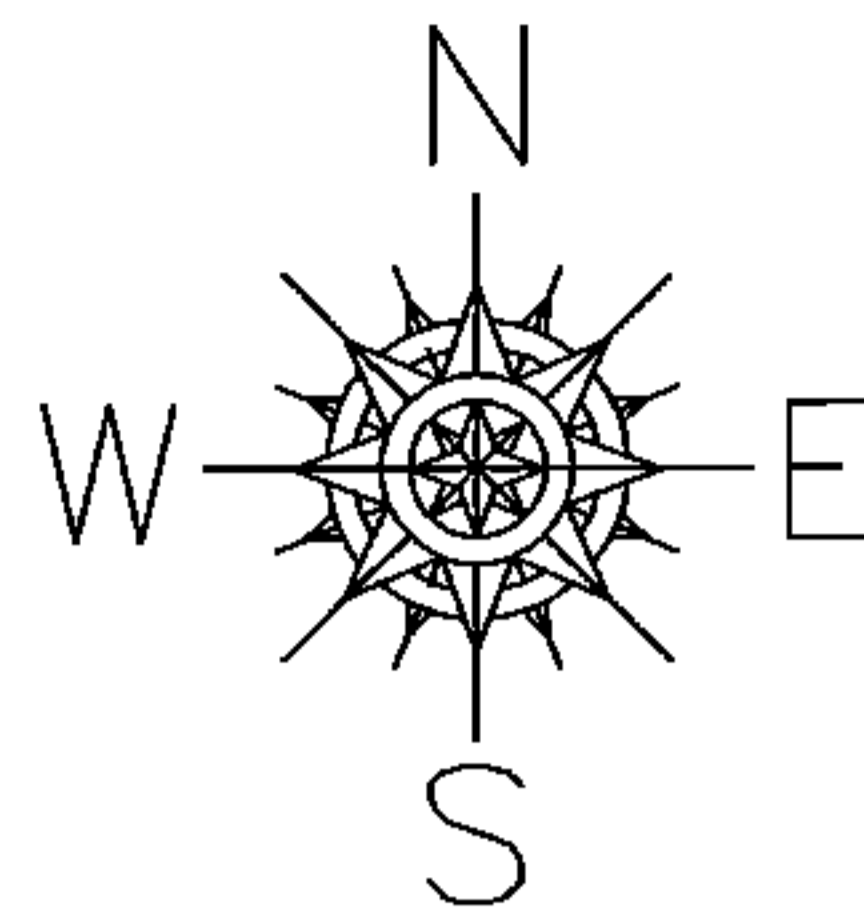


PARENT PARCEL: 06-25-038-101-034  
CHILD PARCEL: 06-25-038-101-037, -038  
STARTING POINT: SOUTHWEST CORNER OF S/L 9 IN GULFHURST SUB. NO.1 (VOL.13 PG.26)

**14-03044-U**

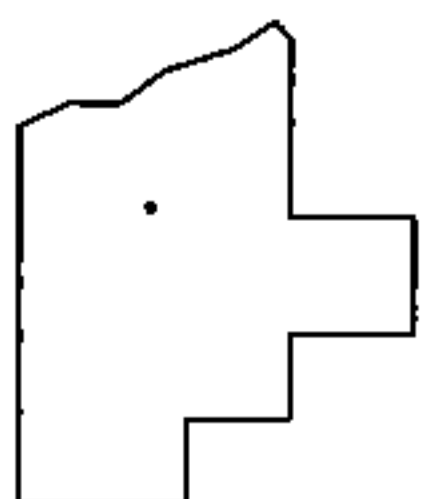


UNCOMBINATION

~~06-25-038-101-034~~  
~~50 X 180~~

06-25-038-101-037      06-25-038-101-038  
50 X 155                      29.95 X 25

PER PRIOR DEEDS



SPLITS/DEEDS PROCESSED

LORAIN COUNTY TAX MAP DEPARTMENT  
226 MIDDLE AVE. ELYRIA, OHIO

SURVEYED BY: N/A  
CLOSURE: N/A  
MAP PAGE(S): 6-86  
APPROVED BY: RRM      DATE: 10-21-14  
SCALE: 1"= 50'      PRIOR INST.: 20140521846