

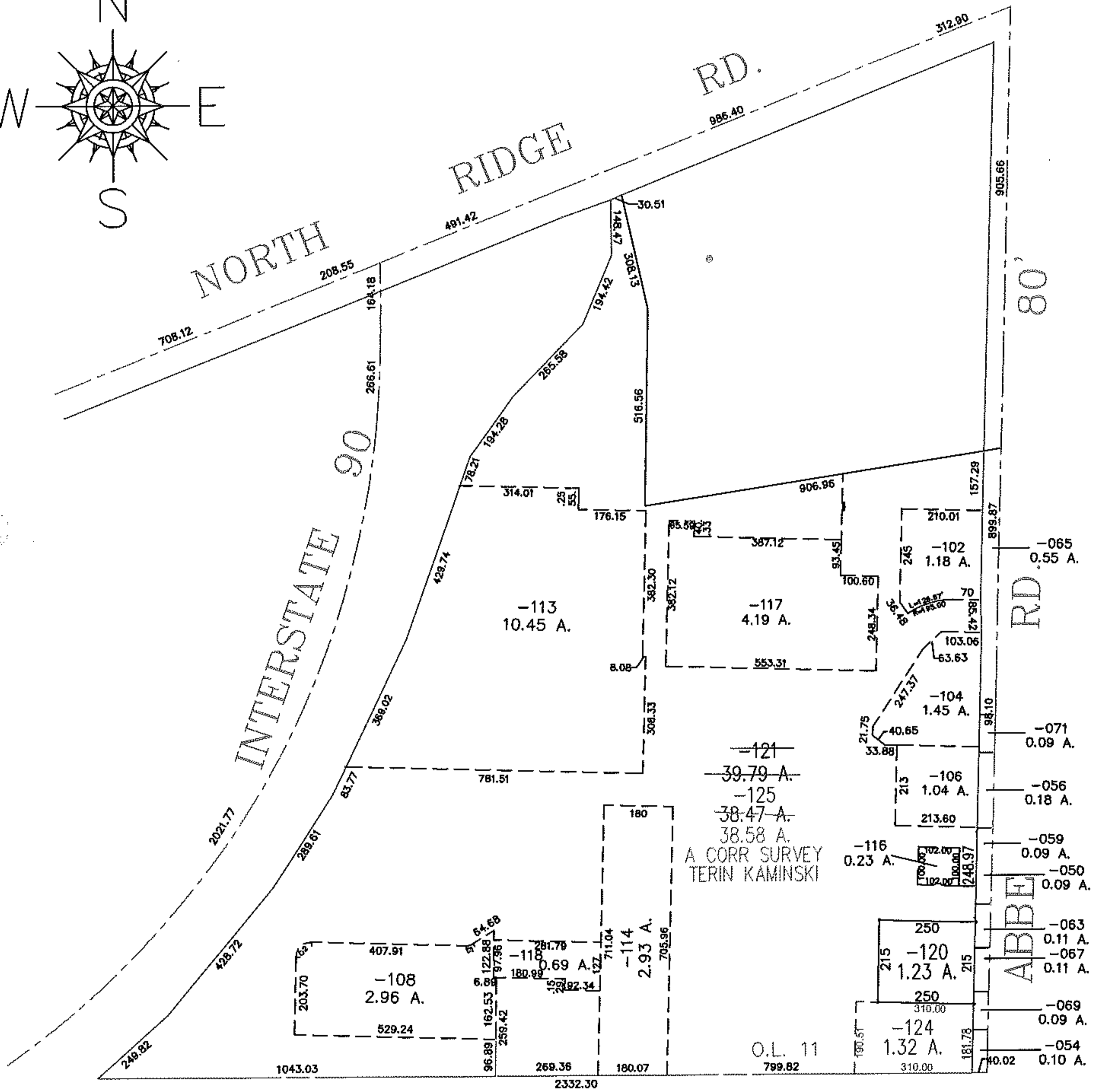
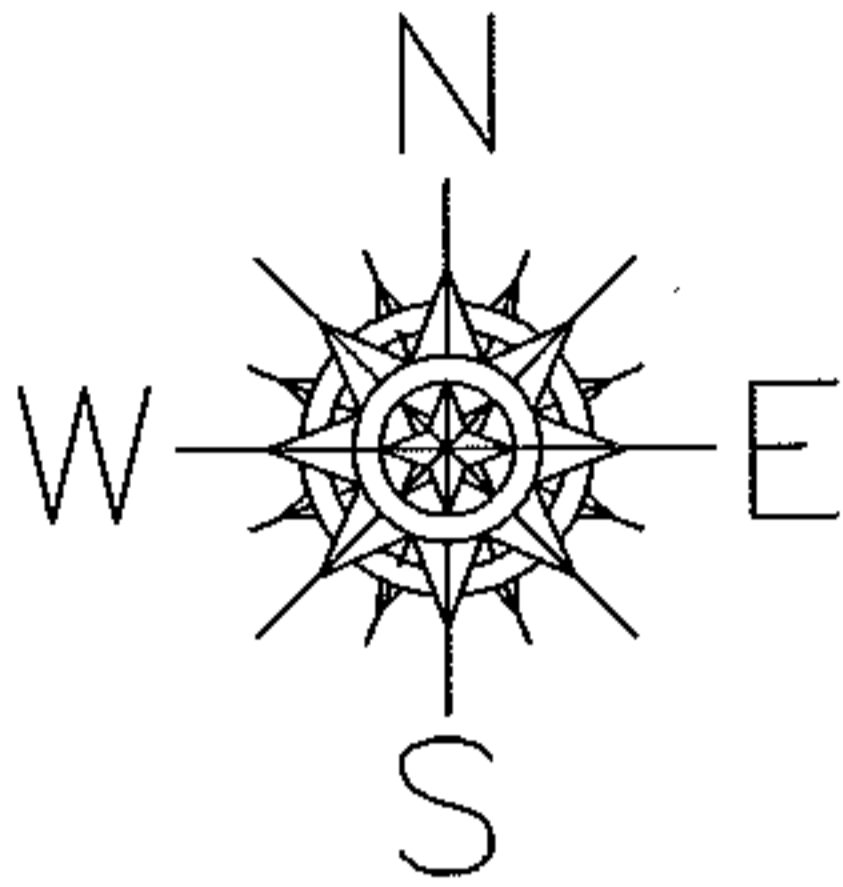
PARENT PARCEL: 03-00-011-102-121

CHILD PARCEL: 03-00-011-102-124, 125

12-03043

STARTING POINT: INT C.L. ABBE RD AND SOUTHERLY LINE OF O.L. 11

ALSO SEE PINK TICKET #03-00809-C FOR MAP CORR. TO PARCEL -116



SPLITS/DEEDS PROCESSED
 LORAIN COUNTY TAX MAP DEPARTMENT
 226 MIDDLE AVE. ELYRIA, OHIO

SURVEYED BY: TERIN J. KAMINSKI
 CLOSURE: 0:00/10,000
 MAP PAGE(S): 03-00-011-A
 APPROVED BY: JAH DATE: 6-29-2012
 SCALE: 1" = 400 PRIOR INSTRUMENT: 20010760044