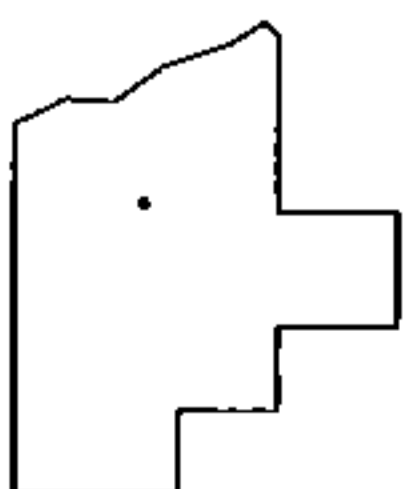
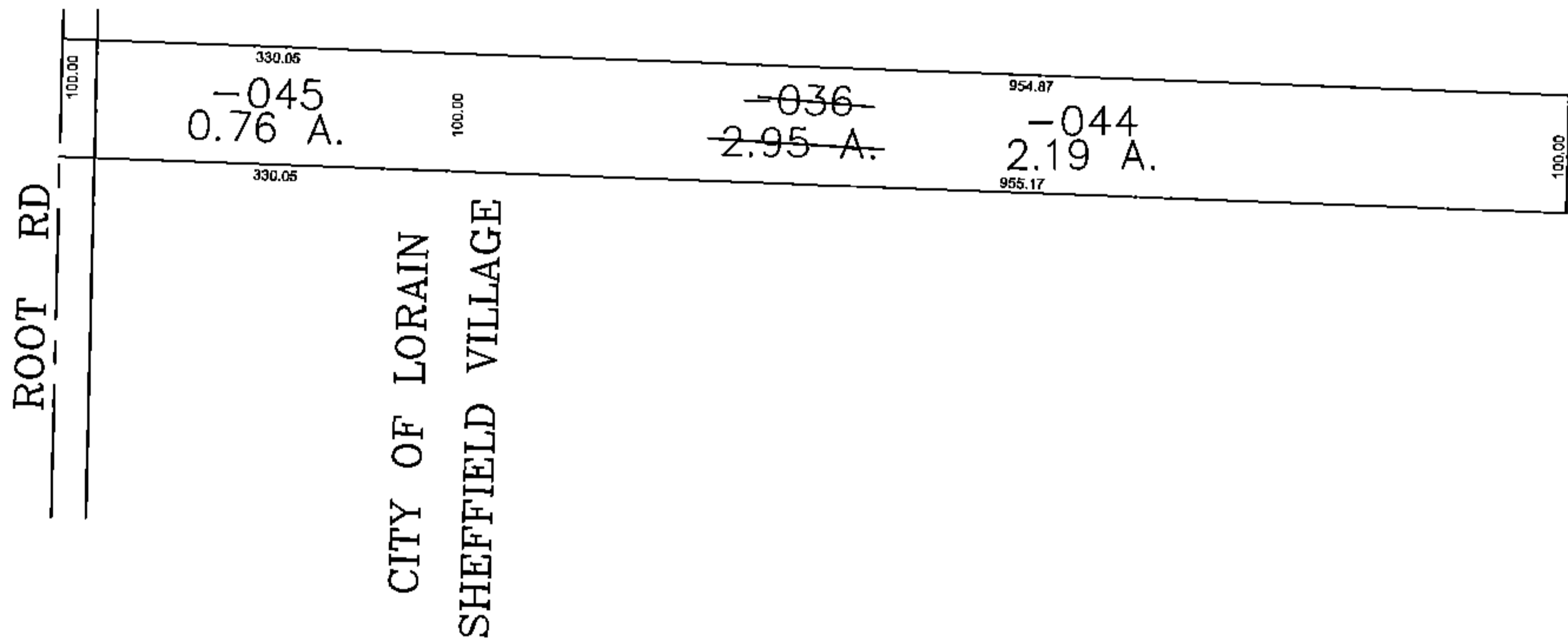
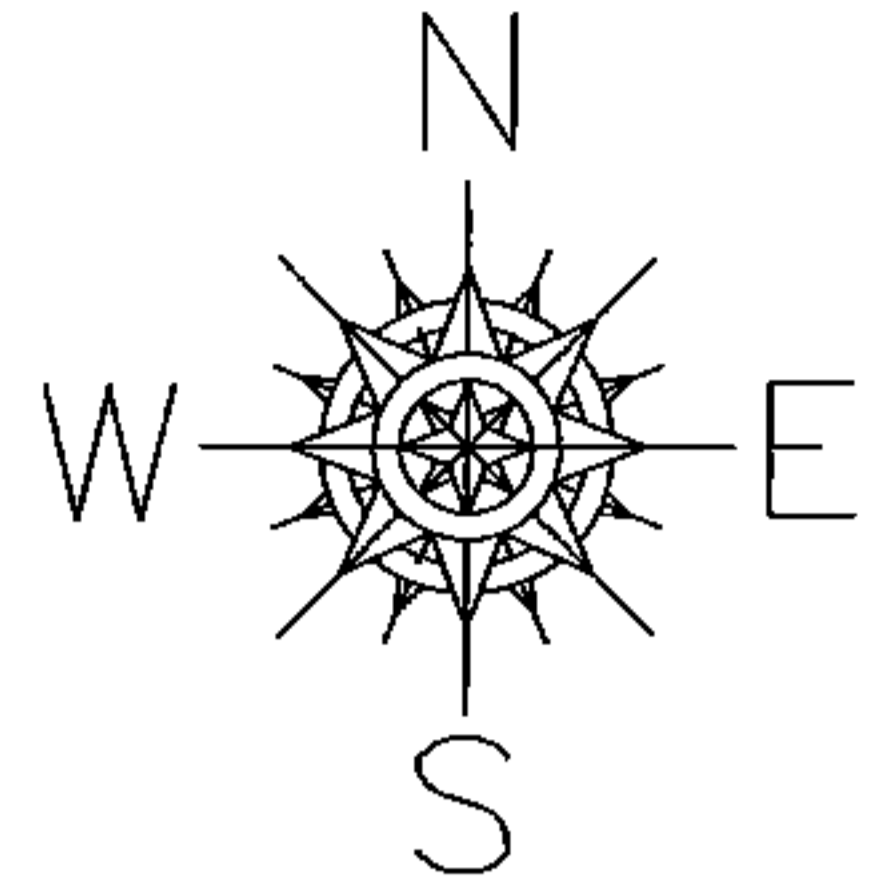


PARENT PARCEL: 03-00-058-101-036

CHILD PARCEL: 03-00-058-101-044, -045

STARTING POINT: CORP LINE BETWEEN CITY OF LORAIN AND SHEFFIELD VILLAGE

14-03043-U



SPLITS/DEEDS PROCESSED
 LORAIN COUNTY TAX MAP DEPARTMENT
 226 MIDDLE AVE. ELYRIA, OHIO

SURVEYED BY: UNCOMBINATION PER DEEDS
 CLOSURE: 0.00 : 10.000
 MAP PAGE(S): 03-00-058-A
 APPROVED BY: JAH DATE: 10/16/2014
 SCALE: 1" = 200 PRIOR INSTRUMENT: 20080250308