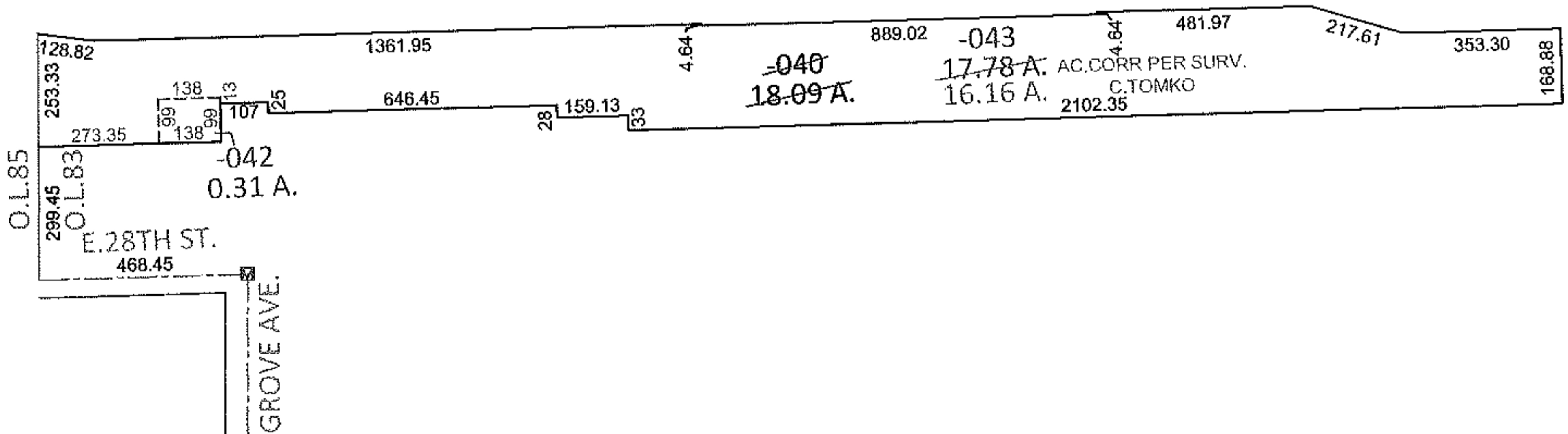
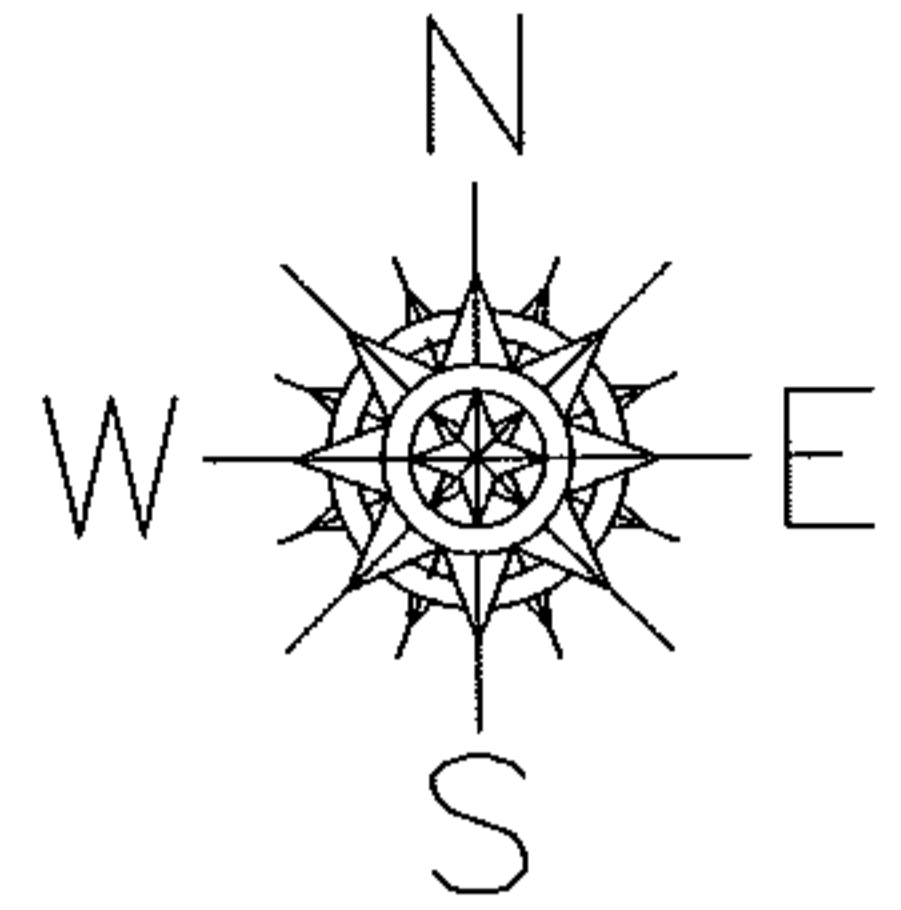


PARENT PARCEL: 03-00-083-101-040

CHILD PARCEL: 03-00-083-101-042, -043

STARTING POINT: AT A MON BOX AT THE INTERSECTION OF C/L OF E.28TH ST. AND C/L OF GROVE AVE.

12-03039



SPLITS/DEEDS PROCESSED

LORAIN COUNTY TAX MAP DEPARTMENT
226 MIDDLE AVE. ELYRIA, OHIO

SURVEYED BY: CHRISTOPHER JOHN TOMKO

CLOSURE: .01:10,000

MAP PAGE(S): 3-00-094-A & B

APPROVED BY: RRM DATE: 6-18-12

SCALE: 1"= 500 PRIOR INST.: N/A