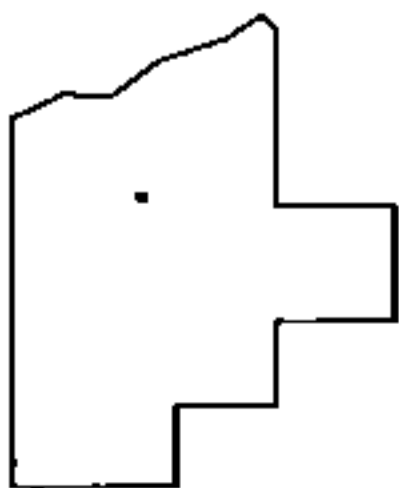
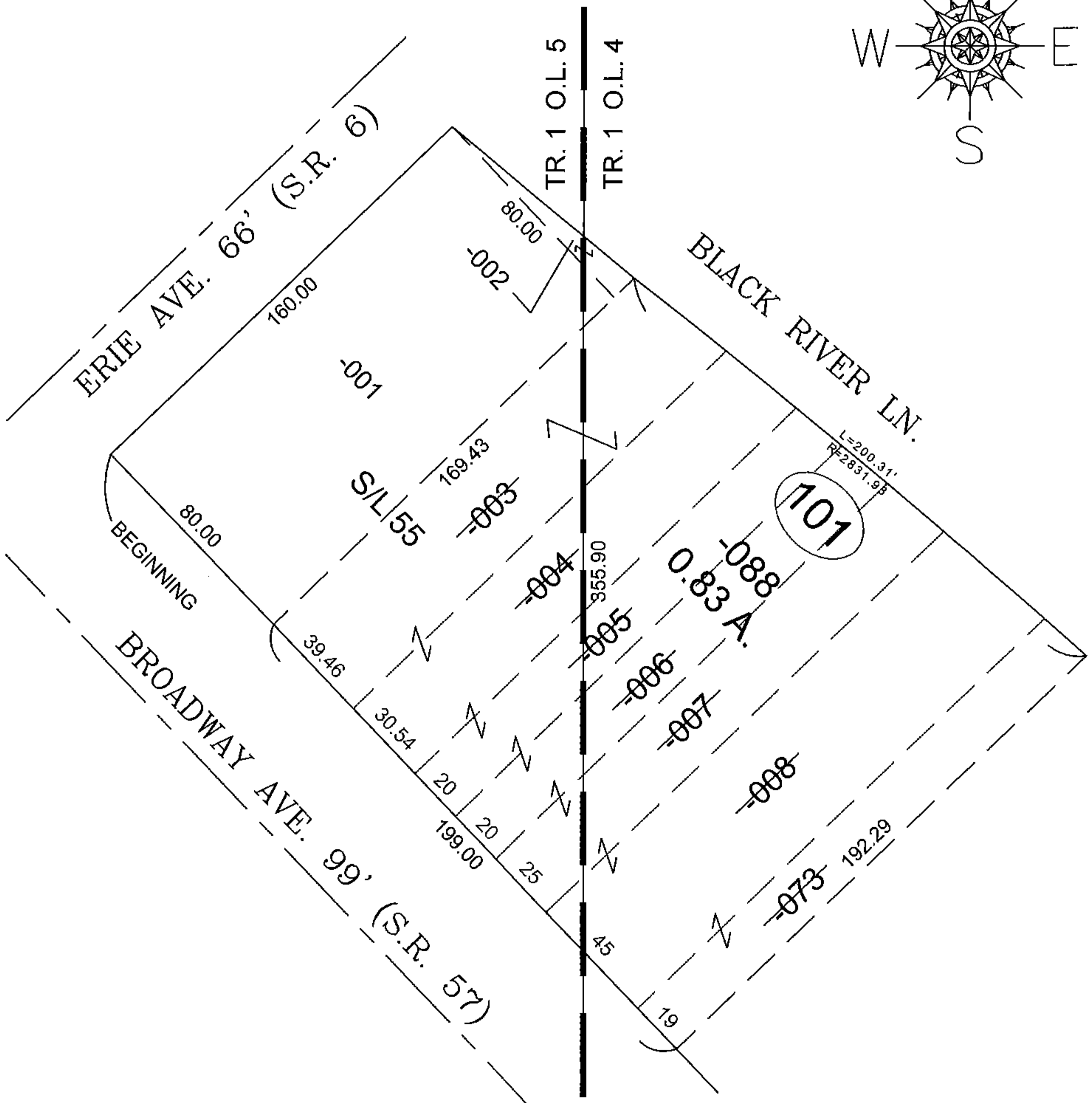
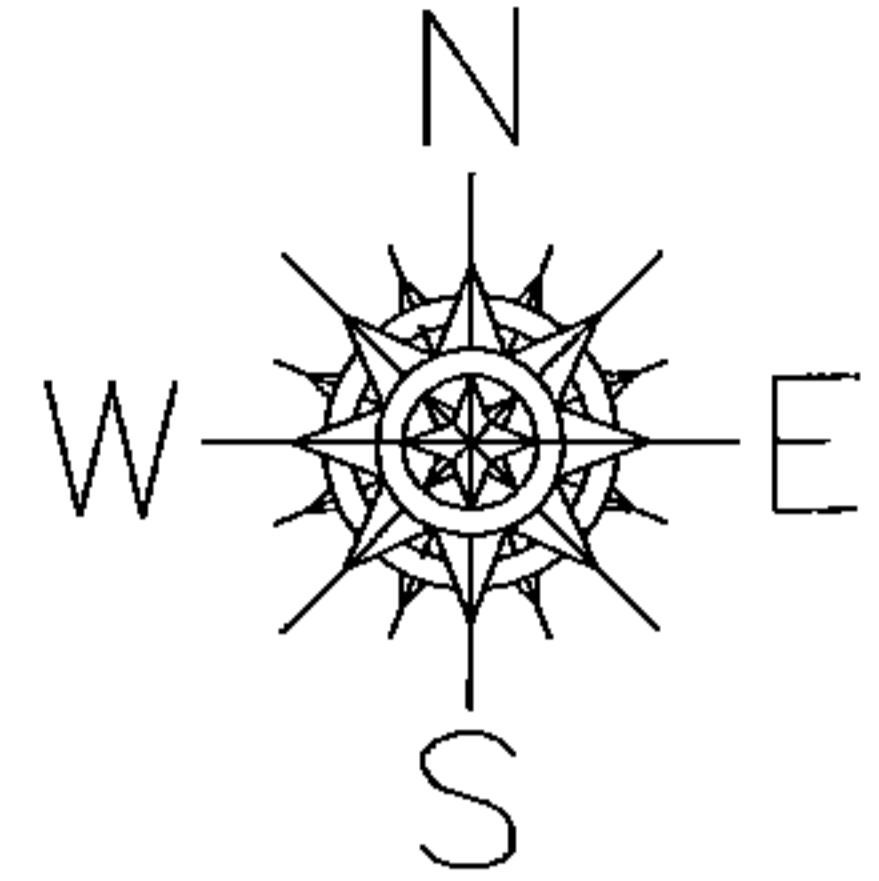


PARENT PARCEL: 02-01-004-101-003, -004, -005, -006, -007, -008, & -073  
 CHILD PARCEL: 02-01-004-101-088  
 STARTING POINT: INTERSECTION, EAST R.O.W. OF BROADWAY & SOUTH R.O.W. OF ERIE AVE.

14-03038-D

COMBINATION



SPLITS/DEEDS PROCESSED

LORAIN COUNTY TAX MAP DEPARTMENT  
 226 MIDDLE AVE. ELYRIA, OHIO

SURVEYED BY: NA  
 CLOSURE: 0.03 : 10,000  
 MAP PAGE(S): 02-01-004 & -005  
 APPROVED BY: TJS DATE: 10/21/14  
 SCALE: 1"= 50' PRIOR INST.: 19980550865