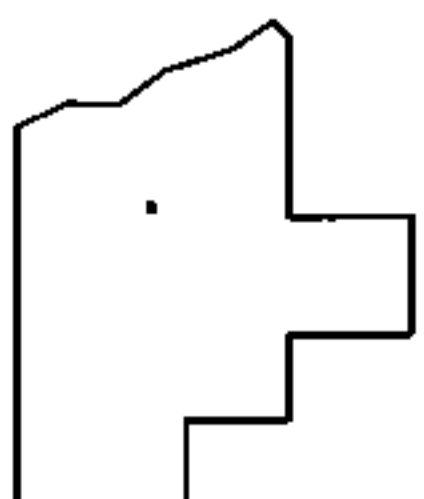
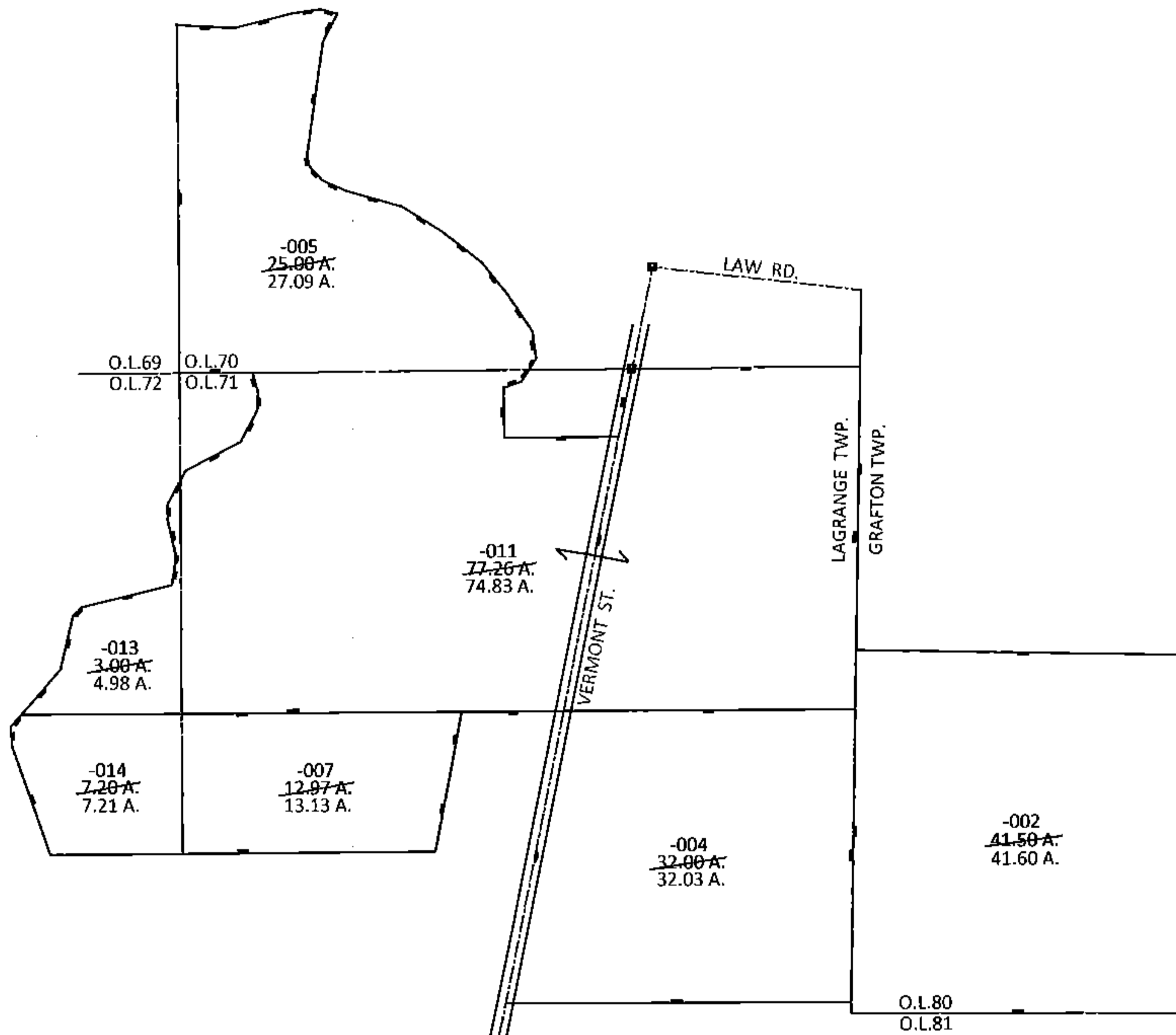
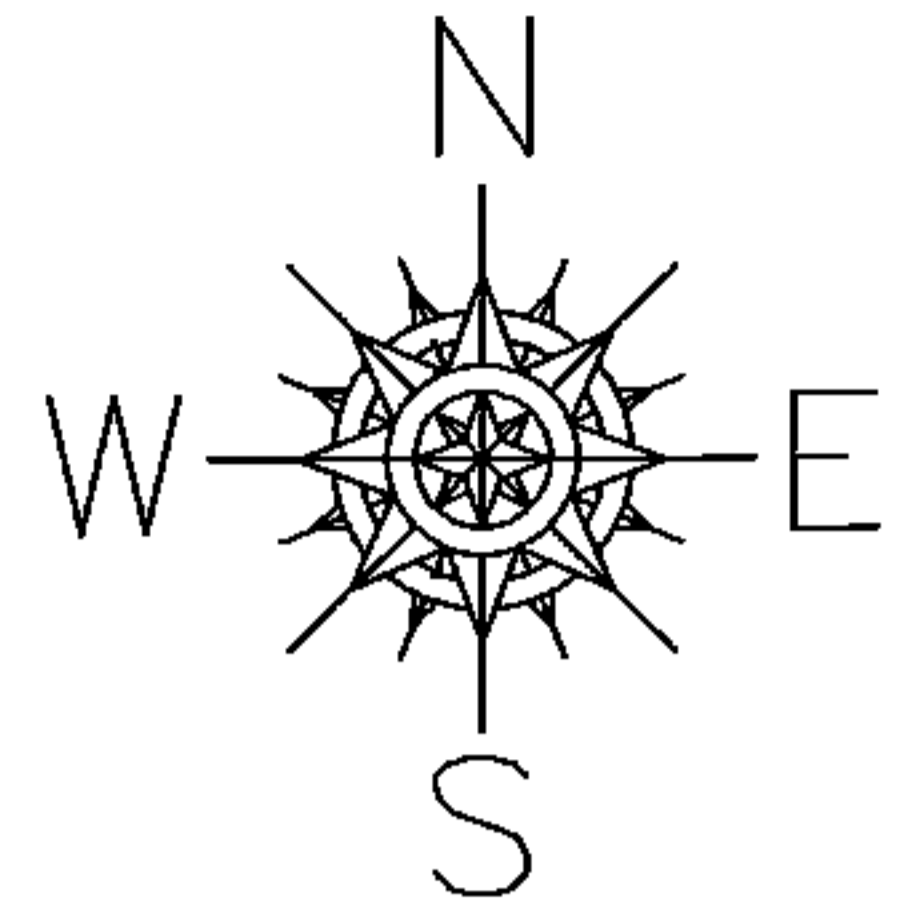


PARENT PARCEL: 15-00-071-000-004,-011,-007 15-00-070-000-005, 15-00-072-000-013,
-014, 16-00-080-000-002

14-03037-A

STARTING POINT: XXXXXX



SPLITS/DEEDS PROCESSED

LORAIN COUNTY TAX MAP DEPARTMENT
226 MIDDLE AVE. ELYRIA, OHIO

SURVEYED BY: BRENT D. ANDERSON
CLOSURE: .01:10,000
MAP PAGE(S): 15-H, 16-E
APPROVED BY: RRM DATE: 10-9-14
SCALE: 1"= 800 PRIOR INST.: 20080258016