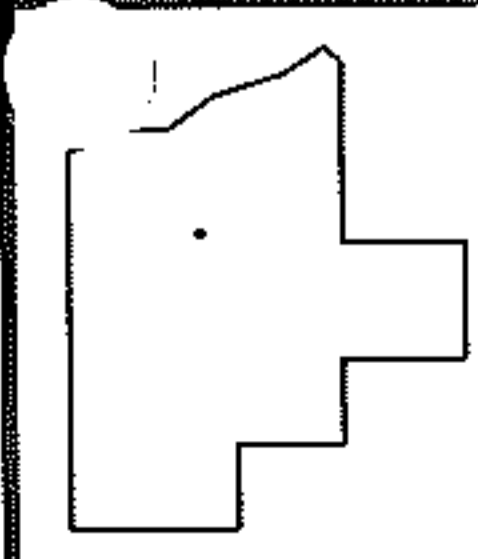
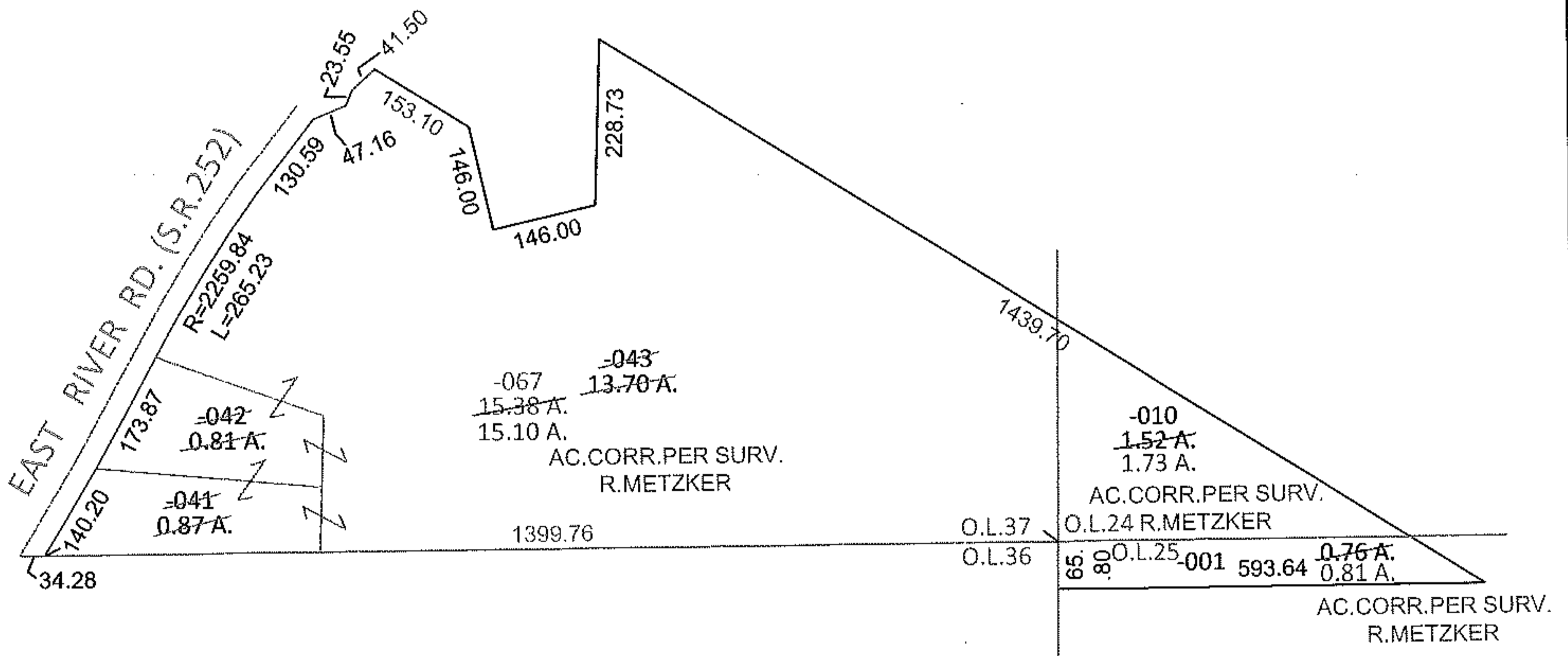
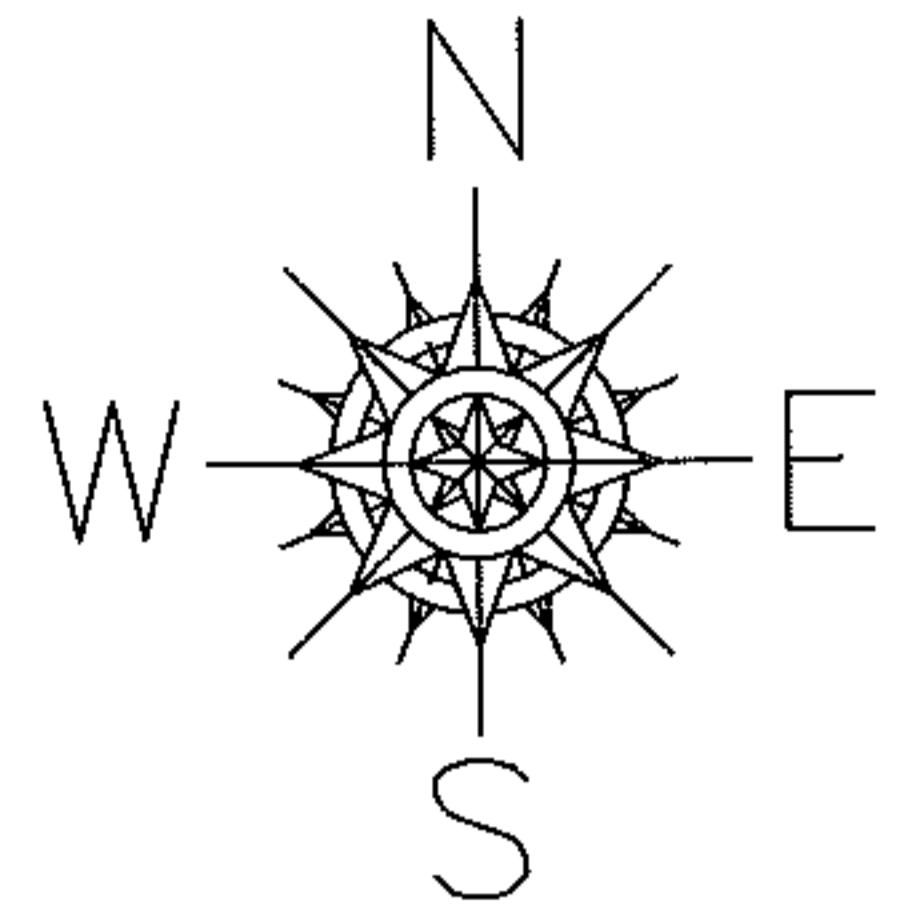


PARENT PARCEL: 12-00-024-000-010, 12-00-025-000-001, 12-00-037-000-041 THRU -043
 CHILD PARCEL: 12-00-024-000-010, 12-00-025-000-001, 12-00-037-000-067
 STARTING POINT: INTERSECTION OF C/L OF S.R.252 AND SOUTH LINE OF O.L.37

12-03031



SPLITS/DEEDS PROCESSED
 LORAIN COUNTY TAX MAP DEPARTMENT
 226 MIDDLE AVE. ELYRIA, OHIO

SURVEYED BY: RICHARD METZKER
 CLOSURE: .01:10,000
 MAP PAGE(S): 12-00-037-B, 12-00-024-A, 12-00-025-A
 APPROVED BY: RRM DATE: 6-6-12
 SCALE: 1"= 300 PRIOR INST.: 20100356337