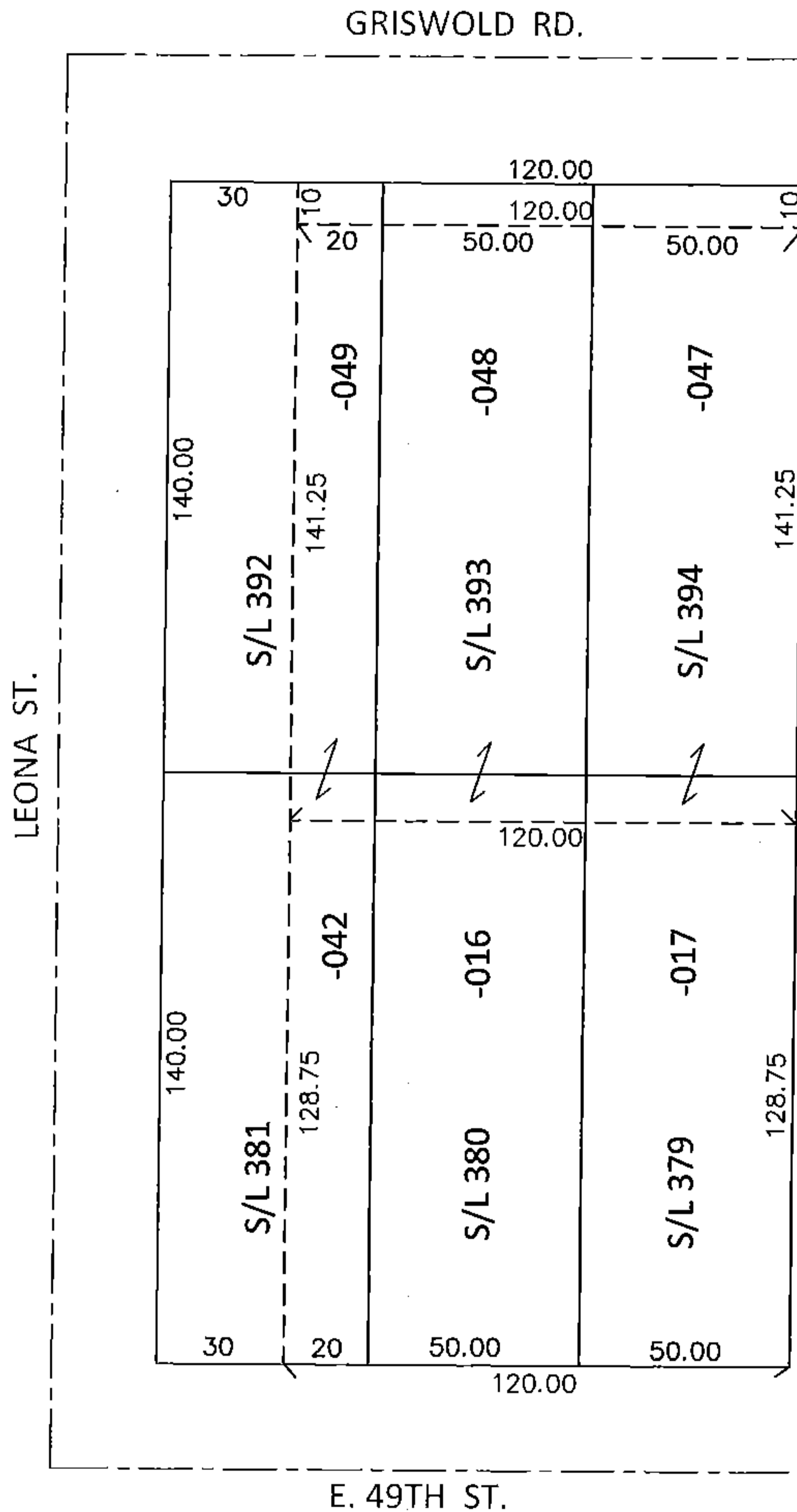
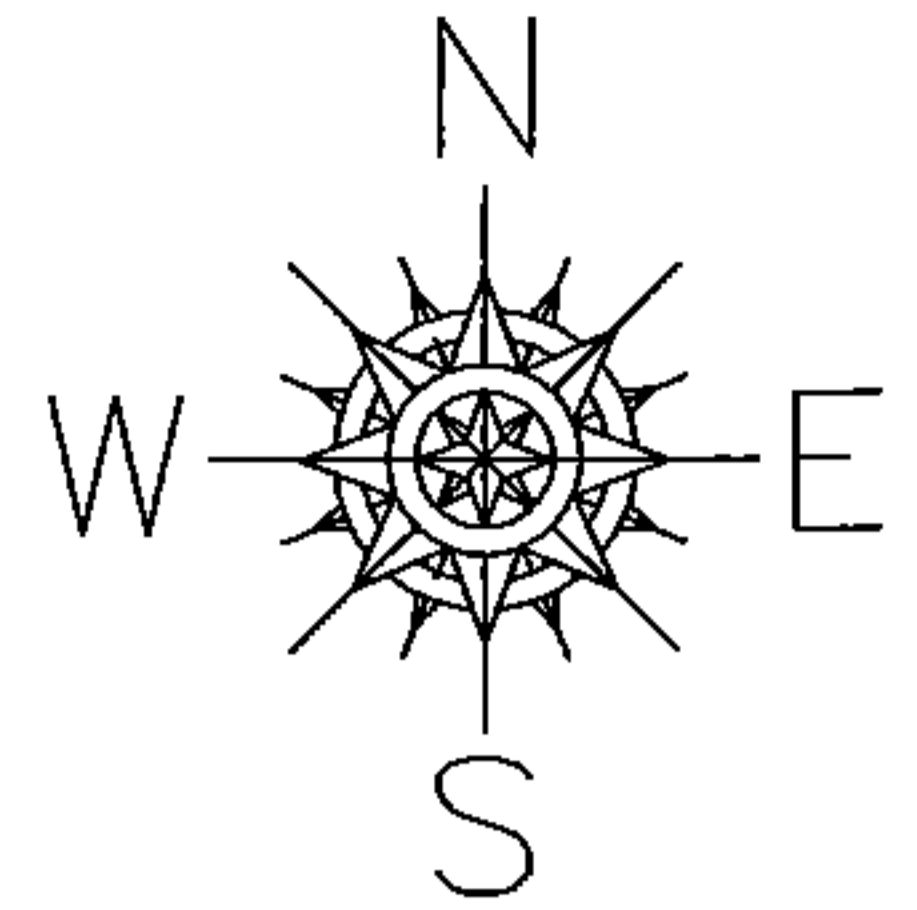


PARENT PARCEL: 06-24-032-103-016, -017, -042, -047, -048, -049

CHILD PARCEL:

STARTING POINT: NORTHEAST CORNER OF S/L 394 IN LEONA HEIGHTS ALLOT.(VOL.6 PG.35)

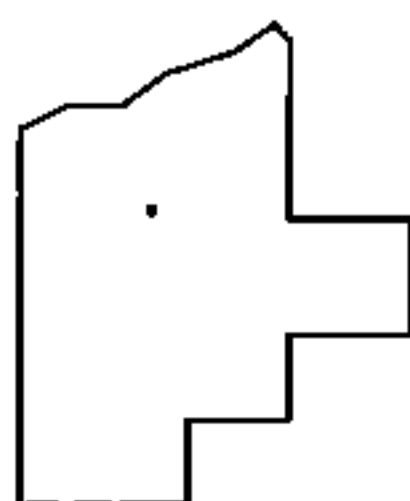
14-03027-C



**DEPTH CORRECTION**

- 06-24-032-103-016  
128.75  
50 X ~~140~~
  - 06-24-032-103-017  
128.75  
50 X ~~140~~
  - 06-24-032-103-042  
128.75  
20 X ~~140~~
  - 06-24-032-103-047  
141.25  
50 X ~~130~~
  - 06-24-032-103-048  
141.25  
50 X ~~130~~
  - 06-24-032-103-049  
141.25  
20 X ~~130~~
- PER PRIOR DEEDS

NEW LINE  
SEE DV 1356/672



**SPLITS/DEEDS PROCESSED**

LORAIN COUNTY TAX MAP DEPARTMENT  
226 MIDDLE AVE. ELYRIA, OHIO

SURVEYED BY: N/A  
 CLOSURE: .01:10,000  
 MAP PAGE(S): 6-45  
 APPROVED BY: RRM DATE: 10-2-14  
 SCALE: 1"= 50' PRIOR INST.: DV 1356/672